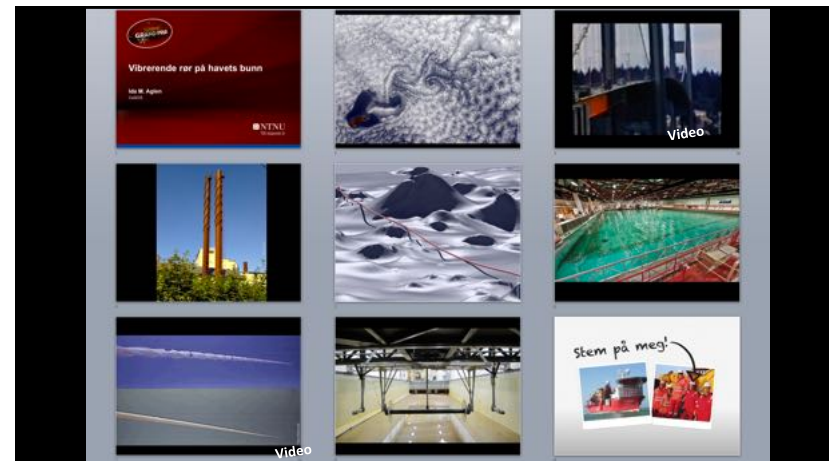
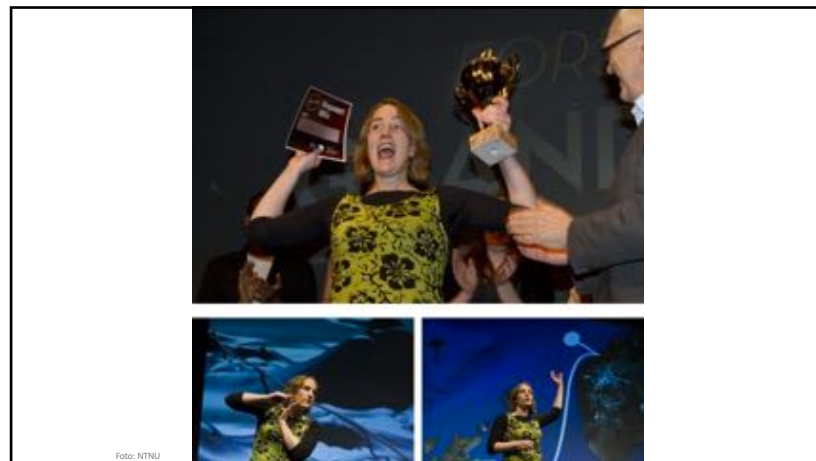
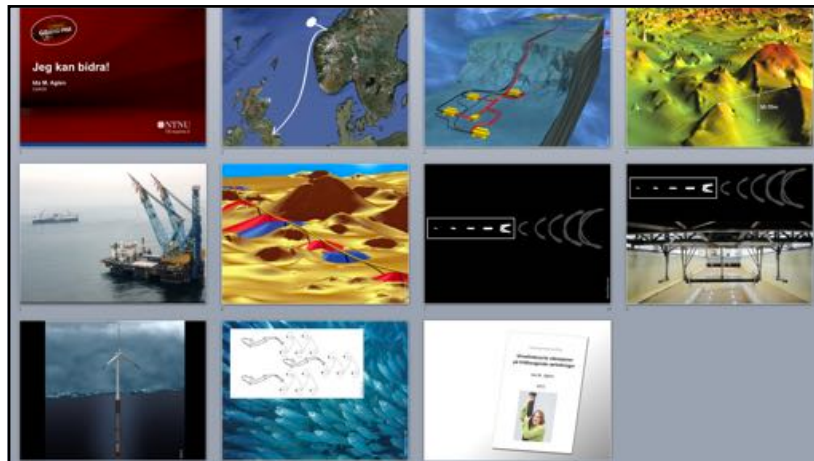
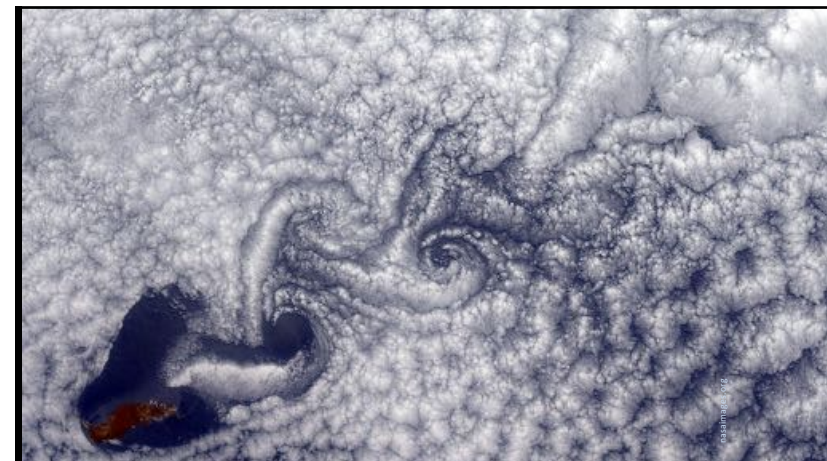
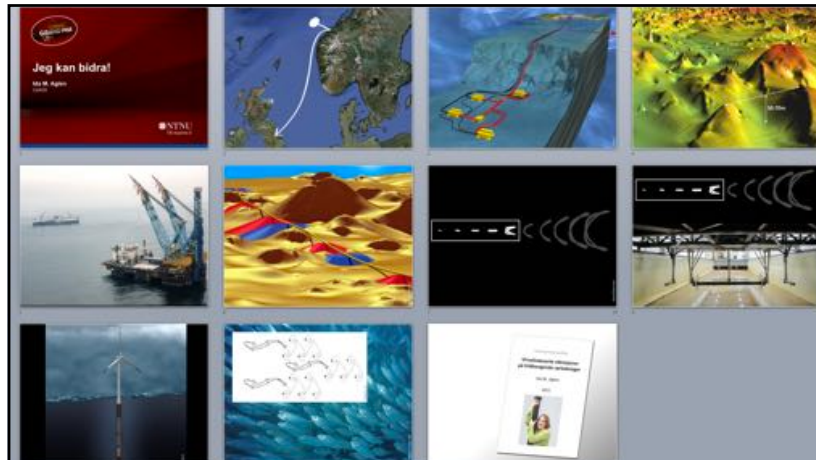
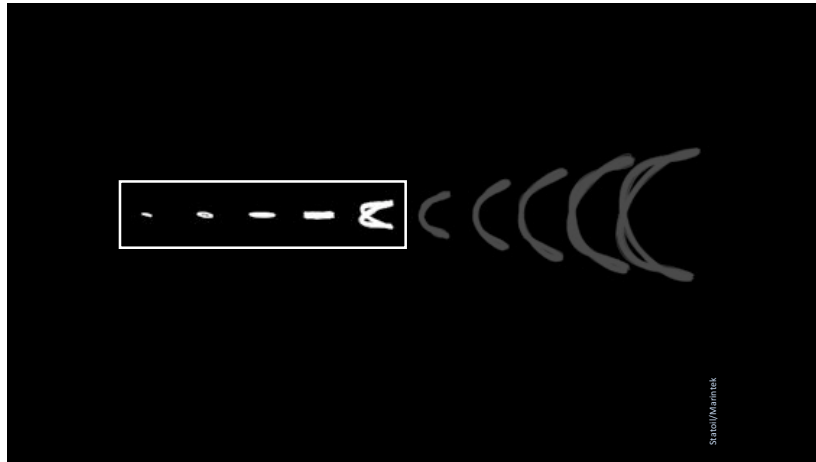


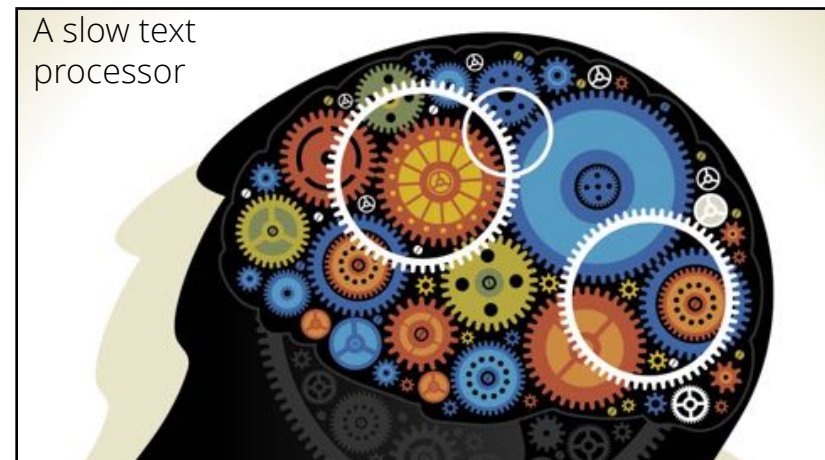
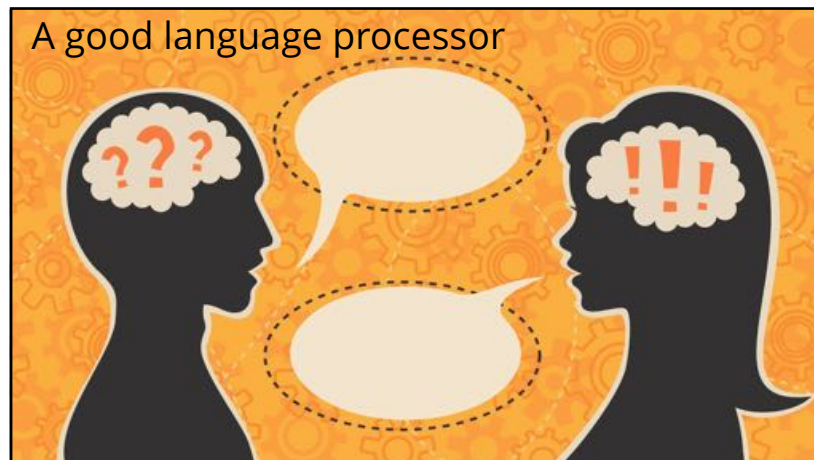
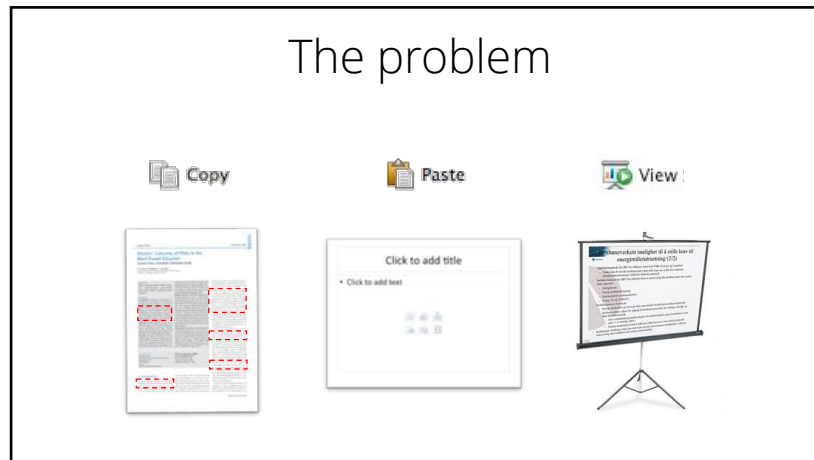


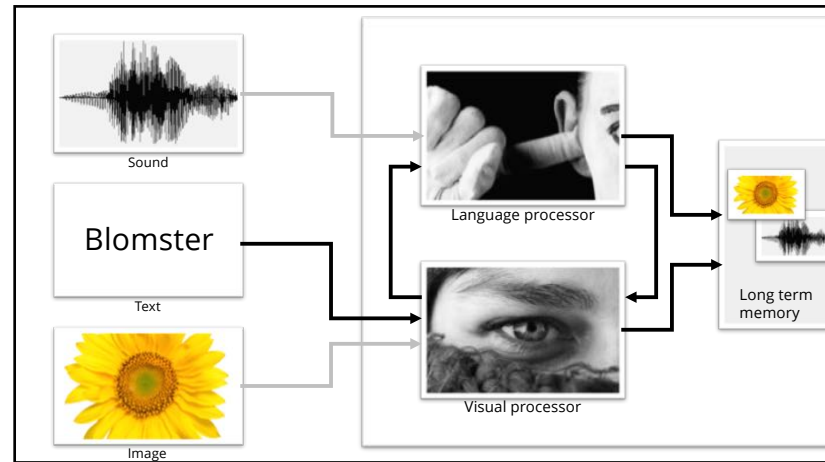
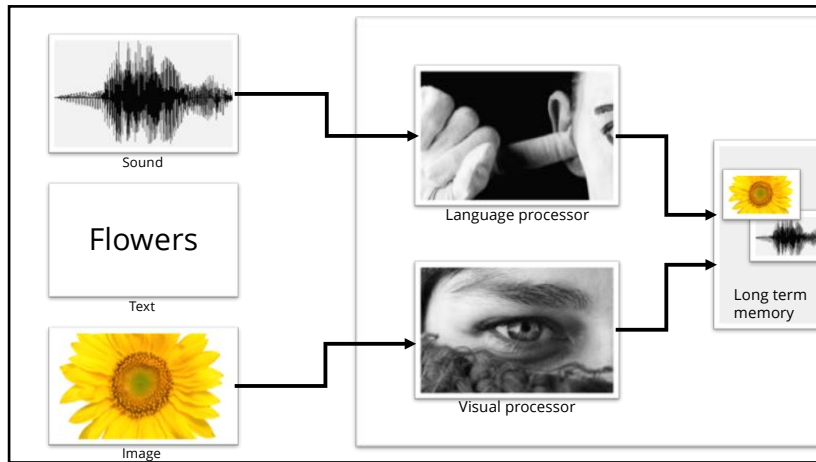
We think in images, not in bullet points

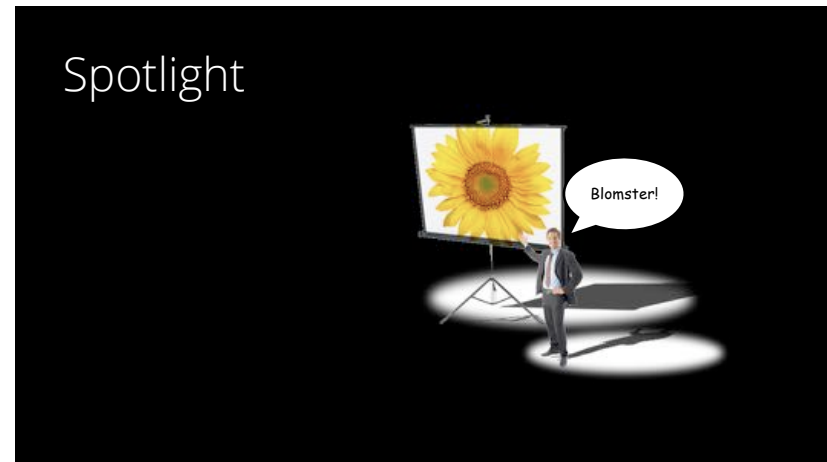
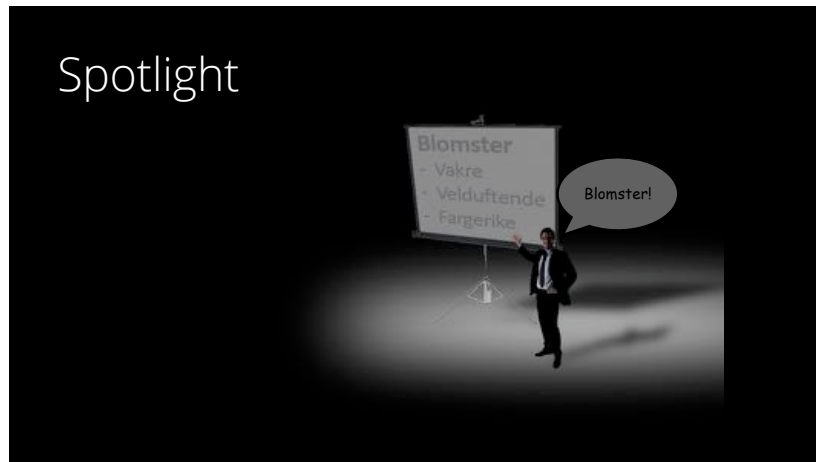


A grid of 48 small text boxes, likely a detailed project plan or schedule. The boxes are arranged in 6 rows and 8 columns. Each box contains text, possibly describing a task, milestone, or resource allocation. The text is too small to read, but the layout suggests a structured project management tool.



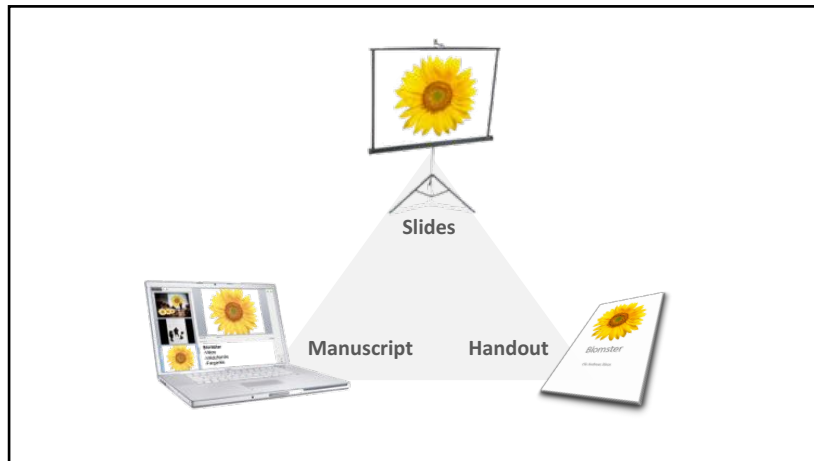












Barn og astma

- Den store Miljø- og barneastmastudien ved Ullevål universitetssykehus (1992-2004) har fulgt nærmere 4000 barn i Oslo fra to års alder.
- Studien viser at 20 % av barna har eller har hatt astma innen ti års alder.
- Nordlandsstudien, hvor seks tusen skoleelever fra andre til åttende klasse ble kartlagt (1995-2009), viser den samme forekomsten av astma.
- Dette gir et svært høyt antall barn som trenger medisiner for sin sykdom.



Jernbaneløst mulighet til å stille krav til energimålerutrustning (2/2)

Jernbaneløst krav

Energimålere i tog på norske linjer

Konklusjon: Jernbaneløst kan stille krav om det skal monteres energimålere i alle tog som jevnlig skal trafikkere det norske jernbaneløst.

Before

73,5 % suffer from XYZ

After



3 of 4 suffer from XYZ

Get things on line!



Before

After

Data collection techniques: Multi-perspective recordings

GUI

- Device interacting capture user interaction with graphical user interface

Device

- Camera capturing finger interaction with the device

Environment

- Camera capturing overall care situation

GUI

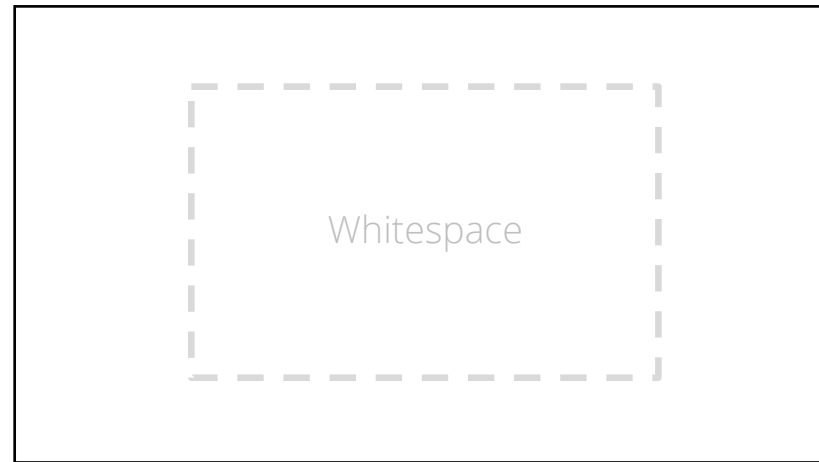
- Device interacting capture user interaction with graphical user interface

Device

- Camera capturing finger interaction with the device

Environment

- Camera capturing overall care situation




Before

Co-variates (categorical)


Vegetables:

1. Never; *ref.cat.*
2. Seldom (less than once a week)
3. Weekly
4. Daily




Physical activity:

1. Inactive (once per month or less); *ref.cat.*
2. Low (0-1day/week)
3. Moderate (2-3d/week)
4. Hard (4-7d/week)



Parents education:


1. Low (NSCE*group 0-2); *ref.cat.*
2. Medium (NSCE*group 3-5)
3. High (NSCE*group 6-8)



*Norwegian Standard Classification of Education


After

Co-variates (categorical)




Vegetables

1. Never
ref.cat.
2. Seldom
(less than once a week)
3. Weekly
4. Daily



Physical activity

1. Inactive
(once per month or less)
ref.cat.
2. Low
(0-1day/week)
3. Moderate
(2-3d/week)
4. Hard
(4-7d/week)



Parent education

1. Low
(NSCE*group 0-2)
ref.cat.
2. Medium
(NSCE*group 3-5)
3. High
(NSCE*group 6-8)

* Norwegian Standard Classification of Education

Before

"Jeg har begynt kurer og programmer for trening og slanking utallige ganger, men jeg forventet at alt skal skje raskt."

"Sara", 27 år

After

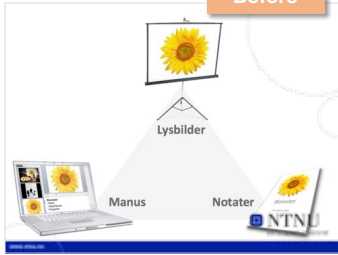


"Jeg har begynt kurer og programmer for trening og slanking utallige ganger, men jeg forventet at alt skal skje raskt."

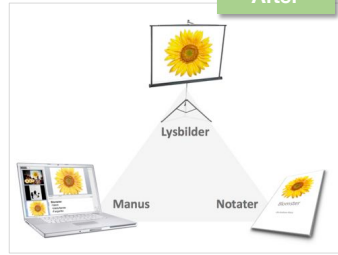
"Sara", 27 år

















Slide template

Before

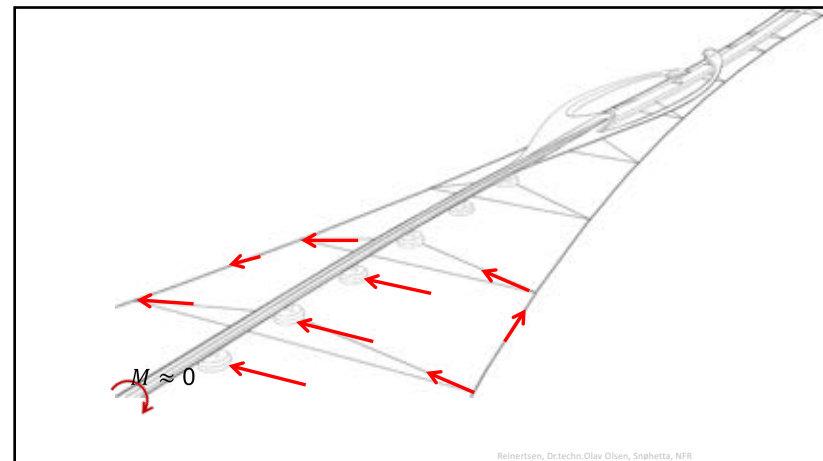
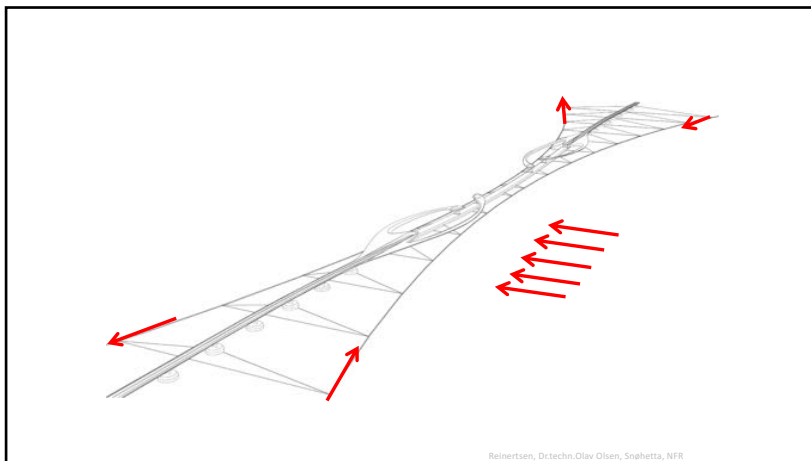
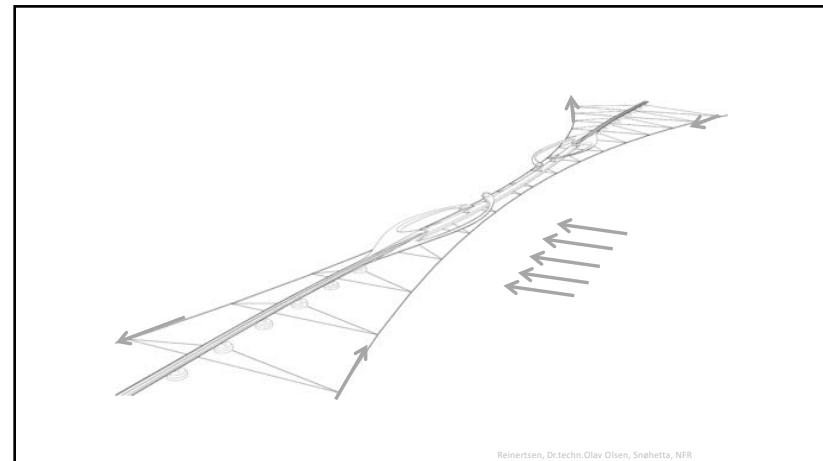


After



Tekst / forgrunn				
				
Bakgrunn				
				

<p>"If everyting is emphasized, nothing is emphasized"</p>
<p>"If everyting is emphasized, nothing is emphasized"</p>
<p>"If everything is emphasized, nothing is emphasized"</p>




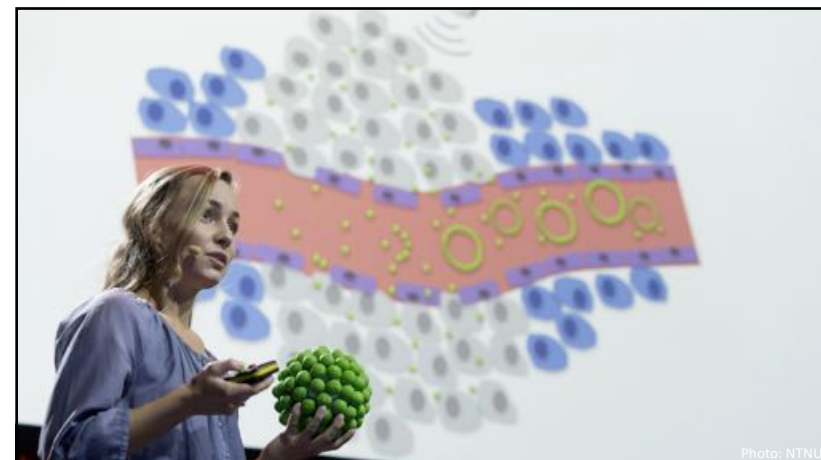


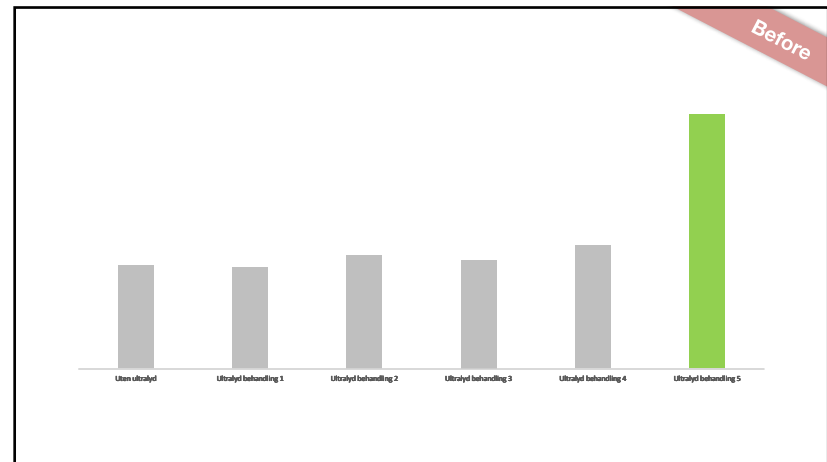
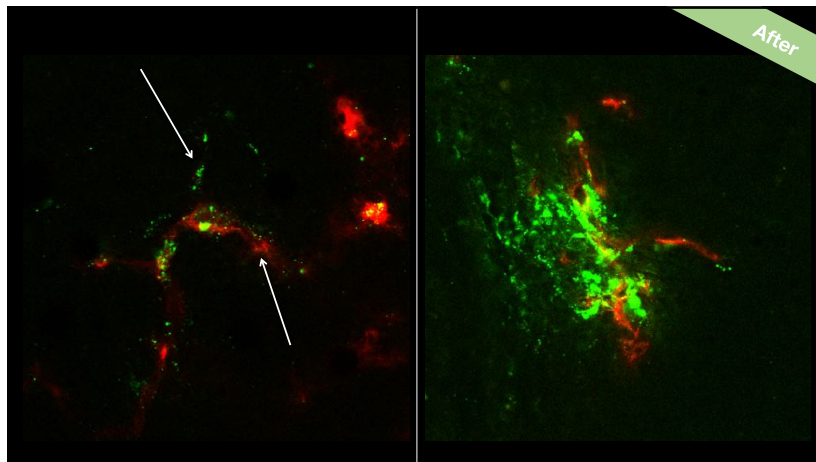
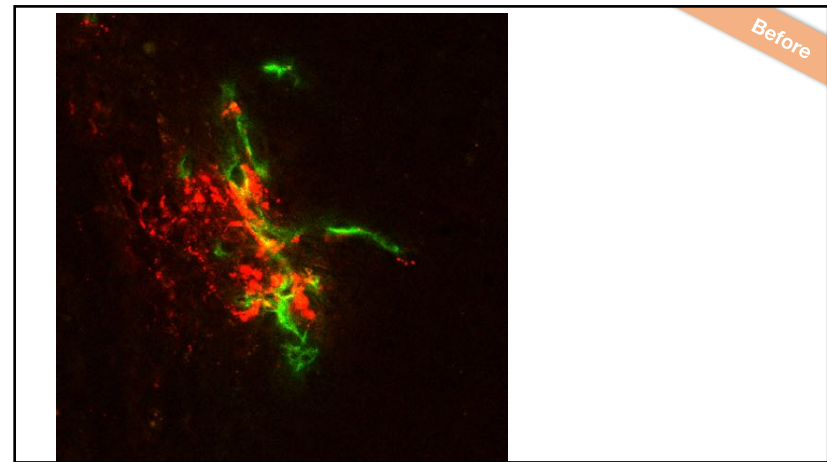
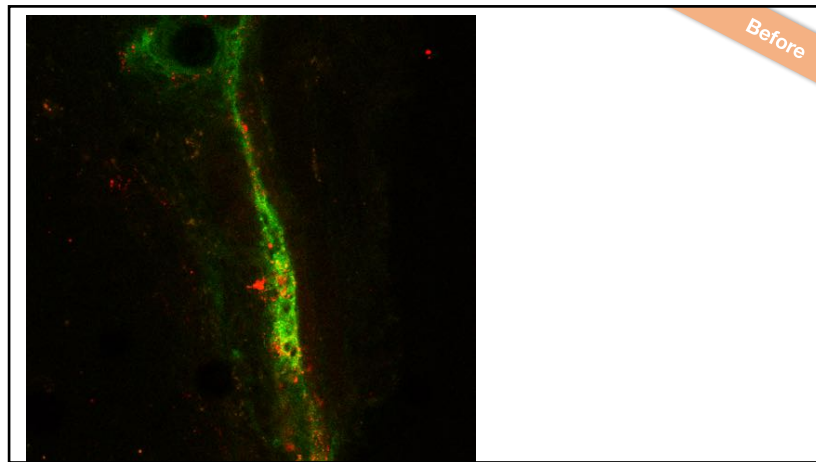


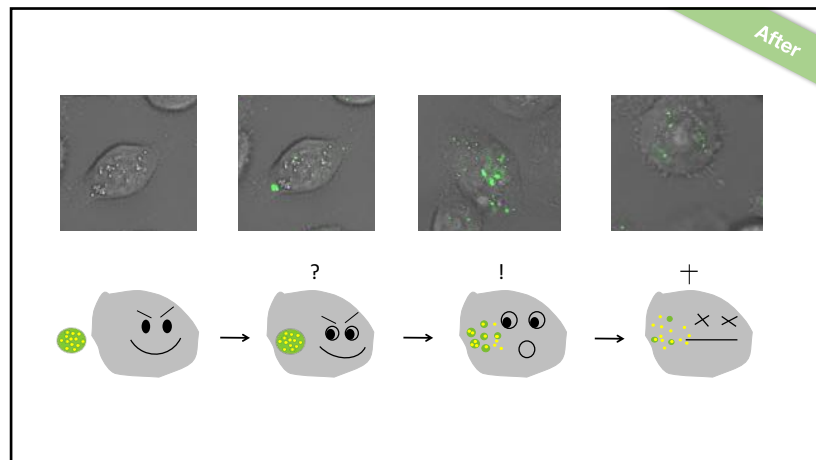
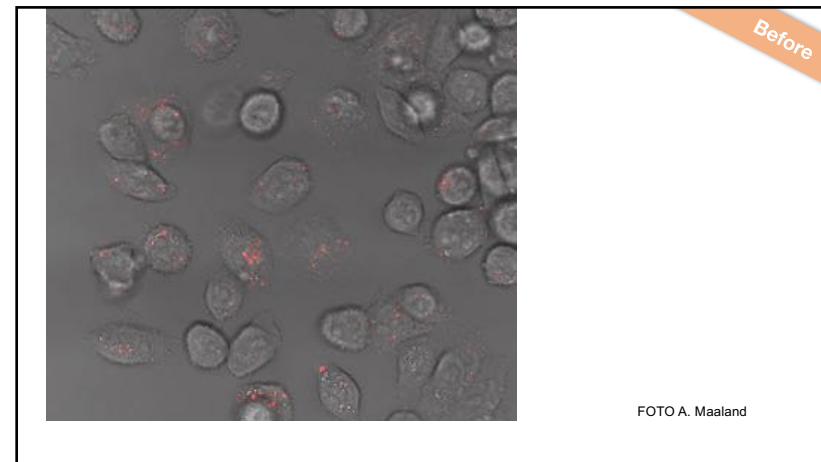
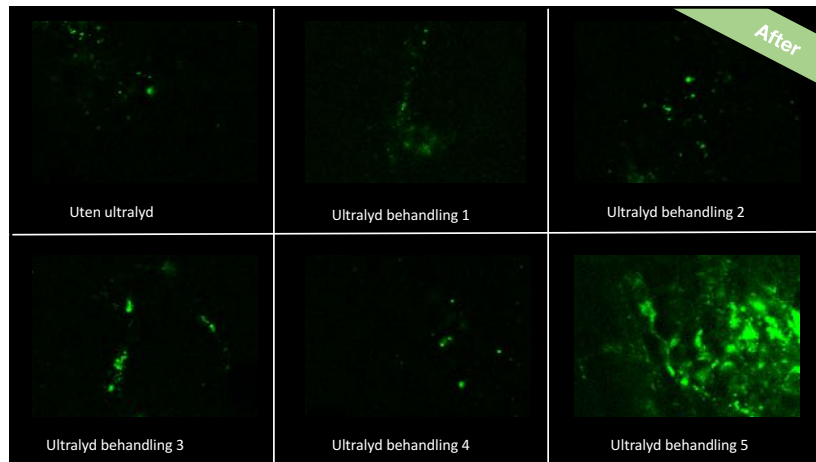
<p>Lær å sykle</p> <ul style="list-style-type: none"> • Monter støttehjul på sykkelen • Hev støttehjulene slik at du vingler • Ta på deg hjelm, hansker og klær som beskytter • Fjern støttehjulene og tren på å falle på gress • Dra ut på sykkeltur hver gang du får muligheten! 	<p>Lær å sykle</p> <ul style="list-style-type: none"> • Monter støttehjul på sykkelen • Hev støttehjulene slik at du vingler • Ta på deg hjelm, hansker og klær som beskytter • Fjern støttehjulene og tren på å falle på gress • Dra ut på sykkeltur hver gang du får muligheten!
<p>Lær å sykle</p> <ul style="list-style-type: none"> • Støttehjul • Vingle • Beskyttelse • Gress • Dra ut! 	<p>Lær å sykle</p> 

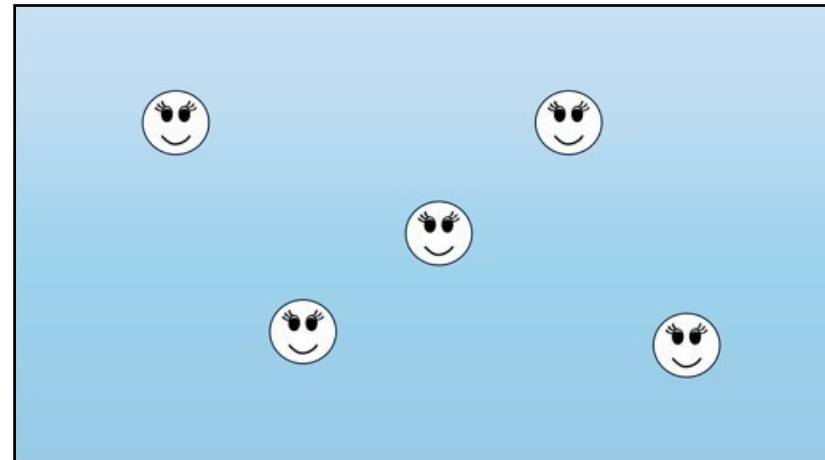
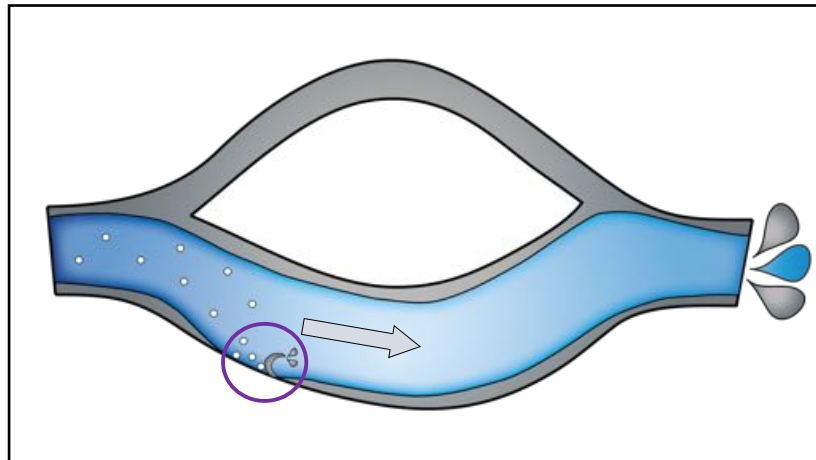
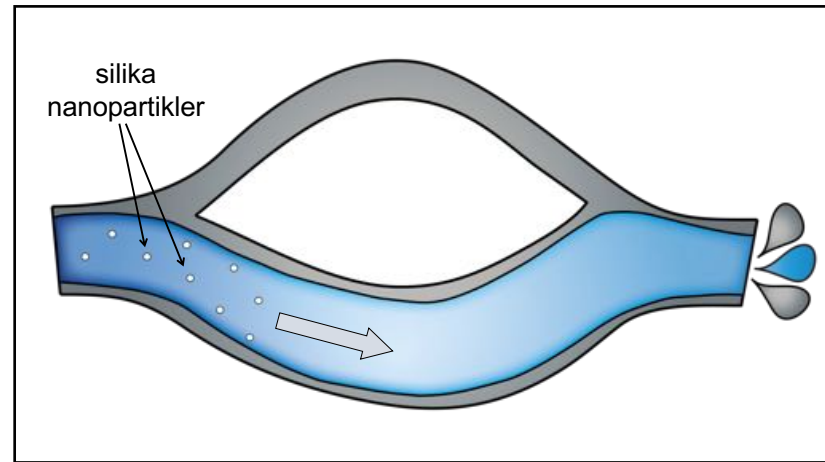
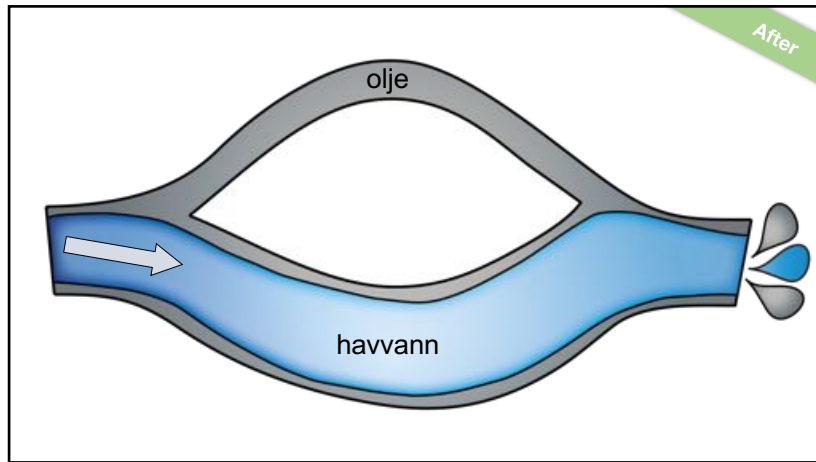
ClipArt

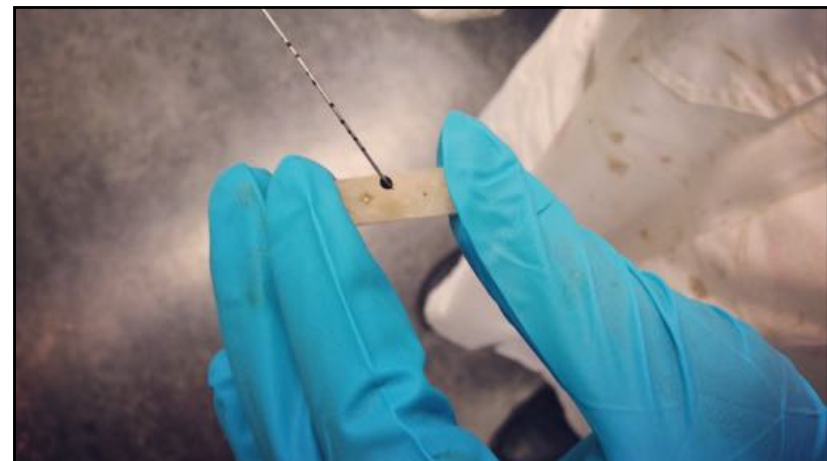
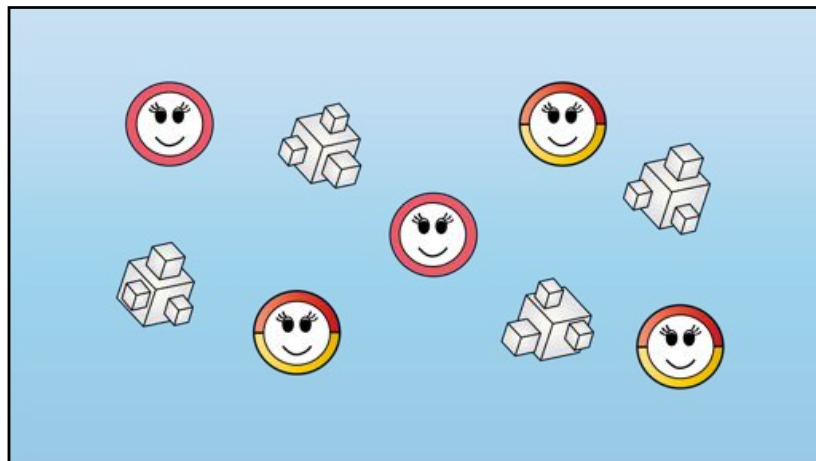
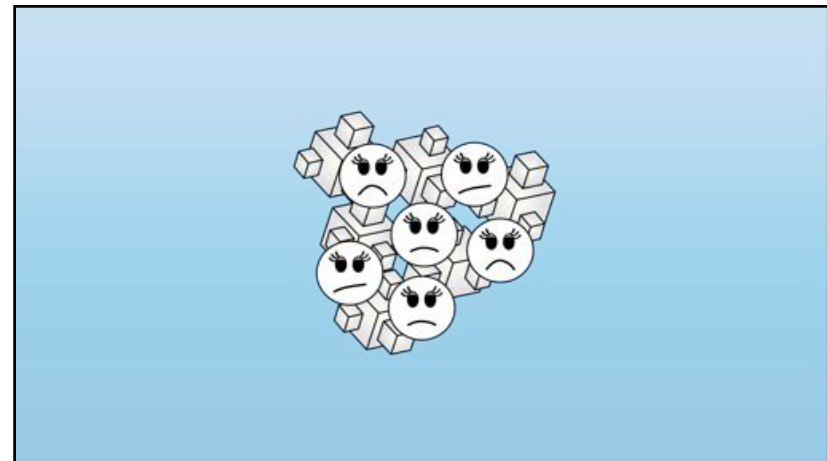
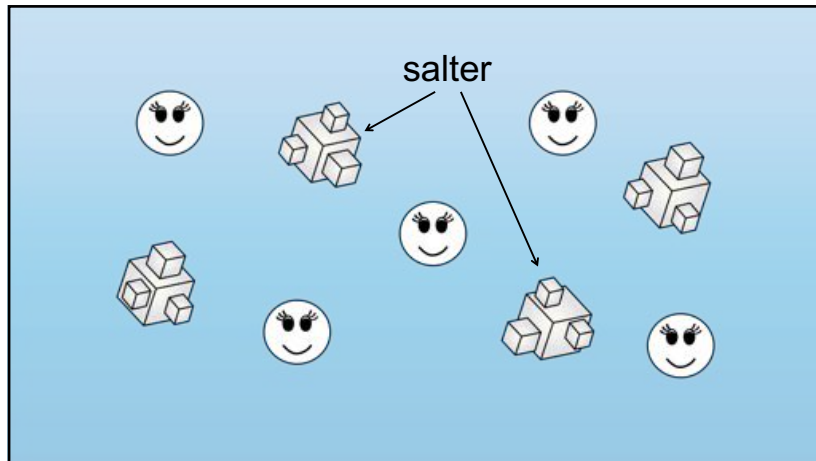
- Lorem ipsum dolor sit amet.
- Consectetur adipiscing elit.
- Suspendisse dictum lobortis urna.
- Donec scelerisque mollis magna.
- Maecenas egestas.

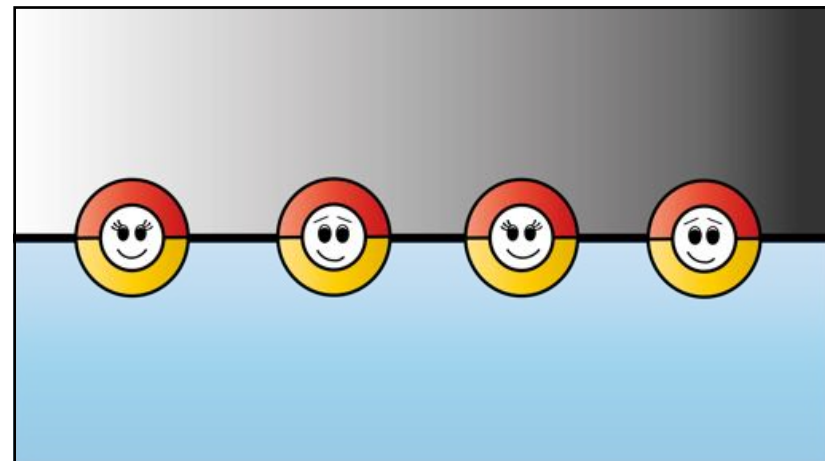
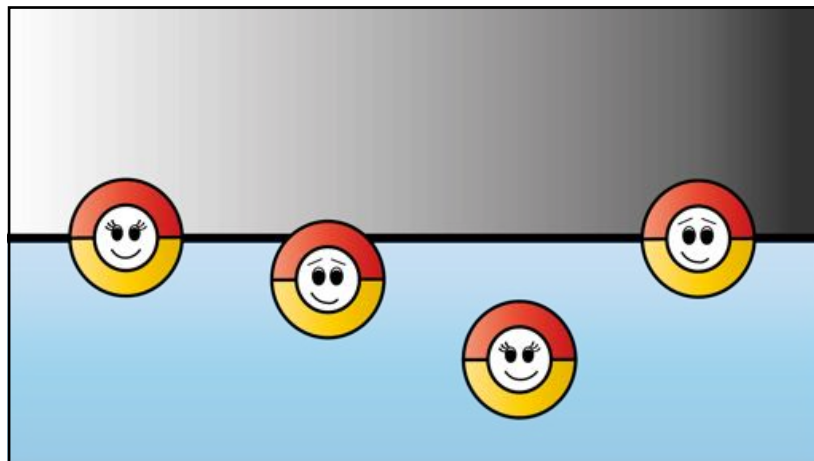
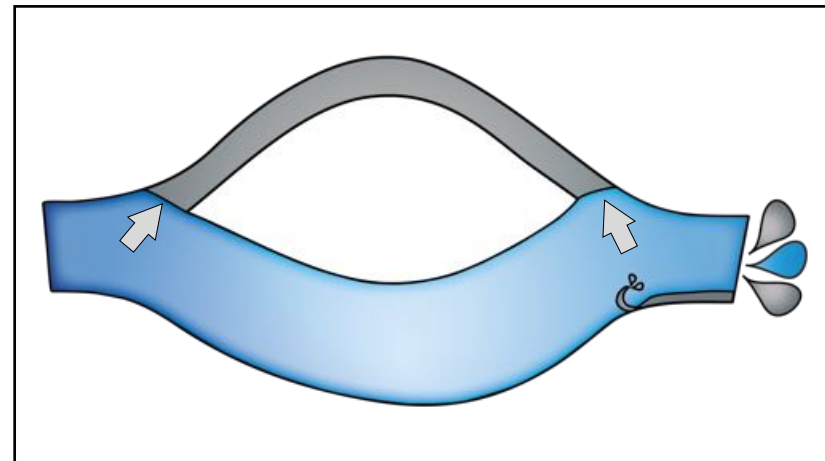
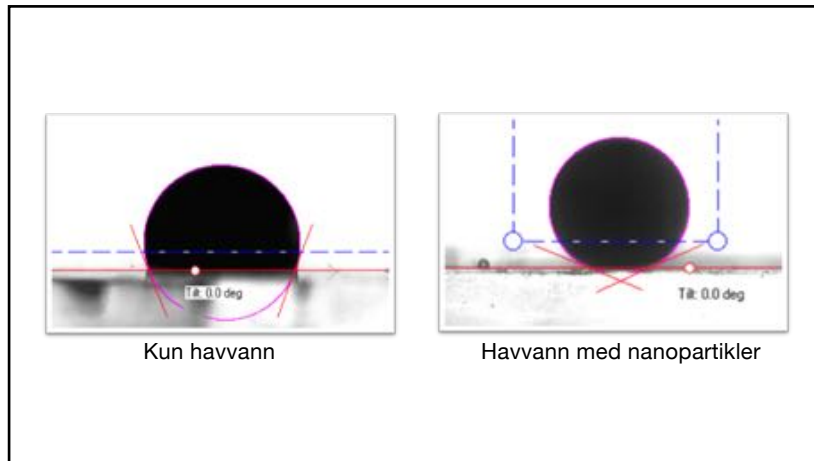





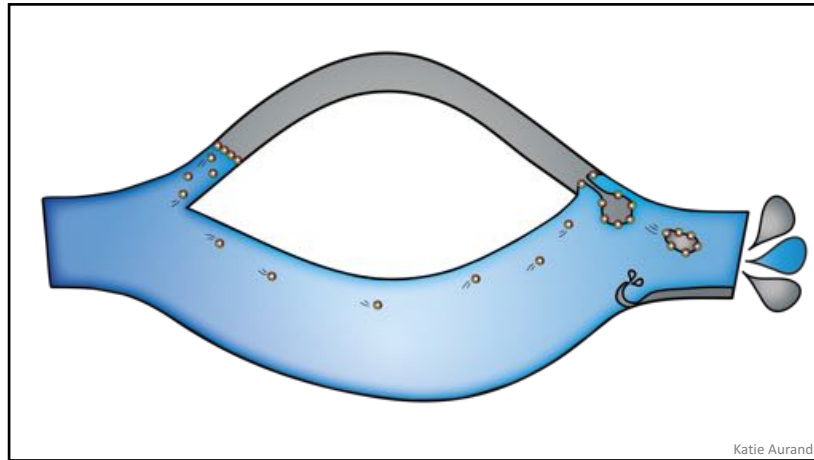












Katie Aurand

One topic per slide

Løselighet og bøyestyrke etter aldring

Aldringsprosedyre:
4 vol % eddiksyre, 80 °C - en uke, eksentrisk rotasjon.

	Material	Fremstilling av aljiver	Sivring
DV	Densur y-TZP	Fremt i løselighet og HDPet bløkk	HDPing: 1500 °C, 2000 bar, 4 d
DM	Densur M Mg-PSZ	Fremt i løselighet bløkk	1800 °C (Ost er ikke regnet)
CY	Corium y-TZP	Fremt i pressetett bløkk og direkte sivring	1350 °C, 2 h

©Forskerforum, Oslo 2013. 8 slides, 1. halvdel: Usikkerhet og styrke av zirkon basert materialer etter syntetisk aldring.

NIOH

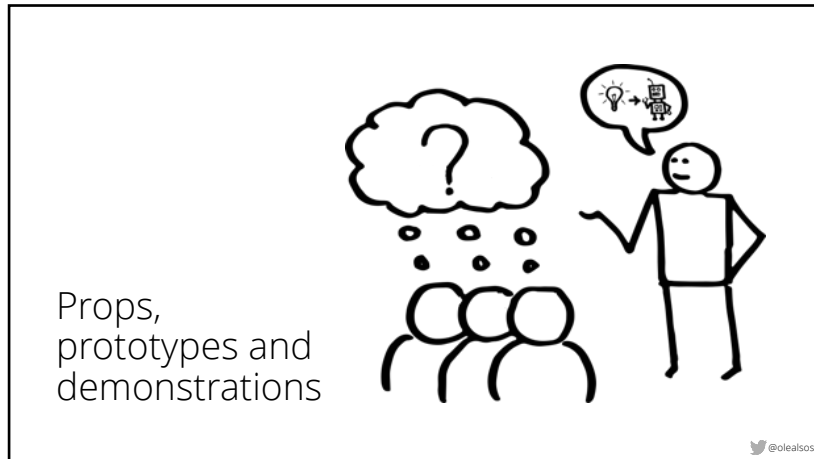
Løselighet og bøyestyrke etter aldring

Aldringsprosedyre:
4 vol % eddiksyre, 80 °C
en uke, eksentrisk rotasjon.

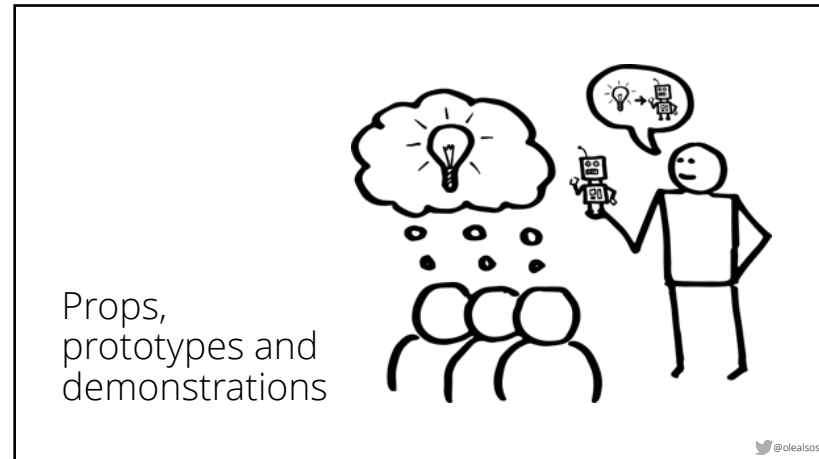
Løselighet og bøyestyrke etter aldring

	Material	Fremstilling av aljiver	Sivring
DV	Densur y-TZP	Fremt i løselighet og HDPet bløkk	HDPing: 1500 °C, 2000 bar, 4 d
DM	Densur M Mg-PSZ	Fremt i løselighet bløkk	1800 °C (Ost er ikke regnet)
CY	Corium y-TZP	Fremt i pressetett bløkk og direkte løselighet	1350 °C, 2 h

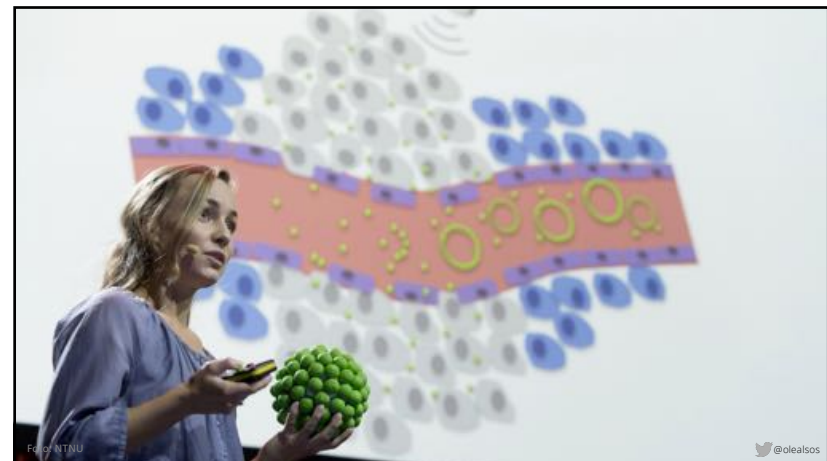
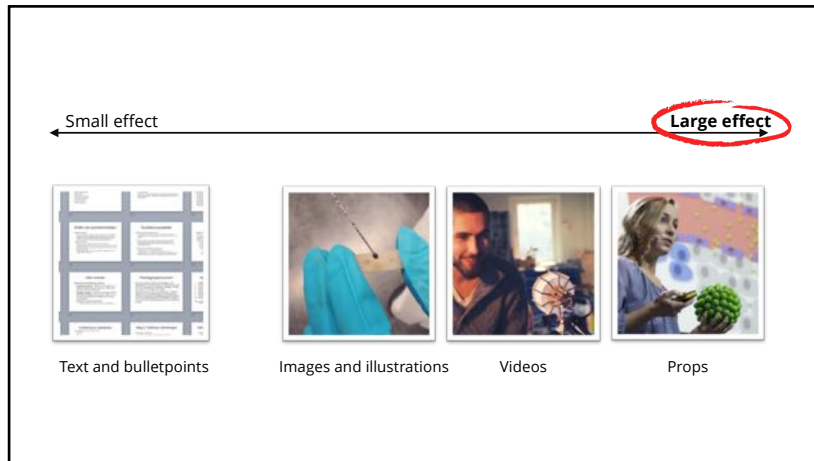
©Forskerforum, Oslo 2013. 8 slides, 1. halvdel: Usikkerhet og styrke av zirkon basert materialer etter syntetisk aldring.

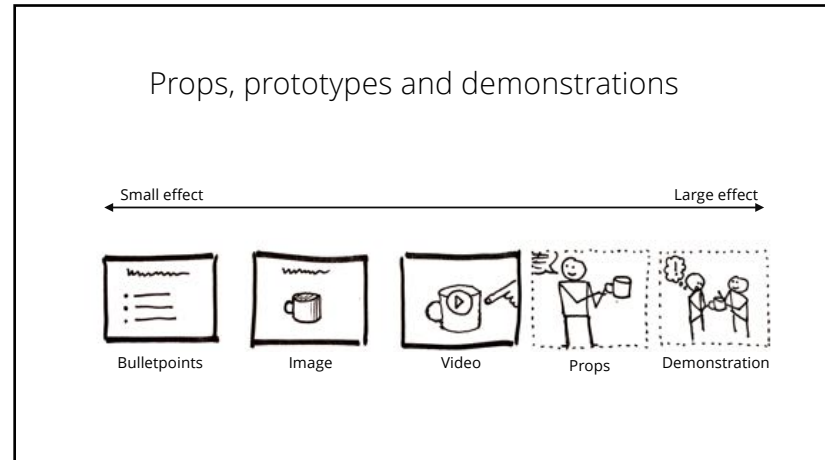


@olealsos





@olealsos











Top 7 hints for effective slides

1. Use  rather than words
2. Whitespace
3. Omit needless words
4. Careful with colors
5. Grid & alignment 
6. Create contrast with **emphasis**
7. Replace slides with **props**

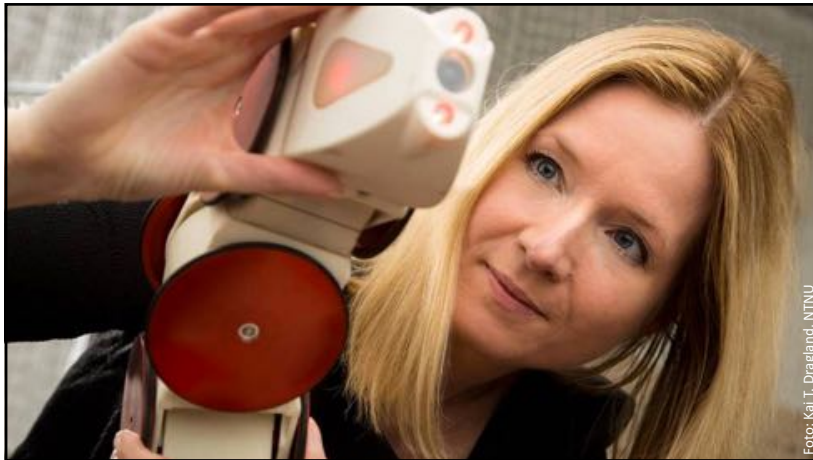


Hvilke bilder vil media ha?



Faksimile fra TU.no 17. oktober 2014

Faksimile fra Universitetsavisen 10. januar 2014



Sak i GEMINI 28. aug. 2015

Sak på tu.no 28. aug. 2015

Sak i Universitetsavisen 8. feb 2016

Available at <http://youtube.com/olealsos>

Graph or table?

Rangering	Rangering	Januar 05		Januar 06		Januar 07	
		Januar 05	Etterstedt	Januar 06	Januar 06	Januar 07	Januar 07
1	(1) Ford	19 242	12,2%	19 092	12,2%	19 092	12,2%
2	(1) Mercedes	19 022	12,4%	19 701	12,4%	19 701	12,4%
3	(4) Volvo	18 240	10,6%	18 000	10,6%	18 000	10,6%
4	(3) Toyota	18 208	10,5%	18 392	10,5%	18 392	10,5%
5	(2) Ford	18 048	10,6%	18 084	10,6%	18 084	10,6%
6	(10) Ford	18 078	10,5%	18 108	10,5%	18 108	10,5%
7	(6) Mercedes	18 001	10,6%	18 001	10,6%	18 001	10,6%
8	(10) Volvo	18 170	10,5%	18 301	10,5%	18 301	10,5%
9	(20) Toyota	18 047	10,6%	18 102	10,6%	18 102	10,6%
10	(10) Toyota	18 048	10,6%	18 102	10,6%	18 102	10,6%
Total		15600	87,3%	17800	87,3%	17800	87,3%

Maximize the data/ink ratio!

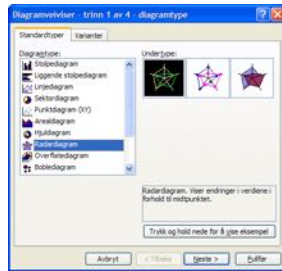
Low data/ink ratio

Produkt	Jan	Feb	Mar
Produkt 1	10 819,55	13 424,40	14 111,43
Produkt 2	11 672,51	14 252,28	13 259,96
Produkt 3	12 502,17	10 557,38	12 873,22
Produkt 4	10 756,57	13 968,91	12 720,64
Produkt 5	11 688,66	11 727,76	11 361,22
Total	57 439,46	63 930,73	64 326,46

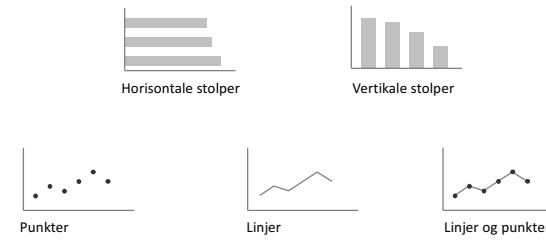
High data/ink ratio

Produkt	Jan	Feb	Mar
Produkt 1	10 819,55	13 424,40	14 111,43
Produkt 2	11 672,51	14 252,28	13 259,96
Produkt 3	12 502,17	10 557,38	12 873,22
Produkt 4	10 756,57	13 968,91	12 720,64
Produkt 5	11 688,66	11 727,76	11 361,22
Total	57 439,46	63 930,73	64 326,46

The problem



Five graph types



Avoid 3D-graphs

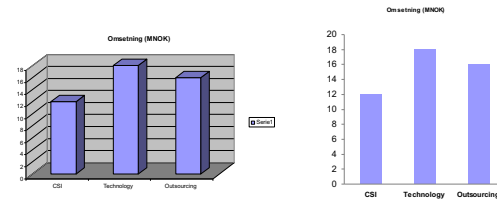
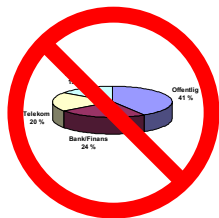


Table VII. Summary of the four evaluation studies used in this thesis



Evaluation study:	Study 1. Using handhelds as input device for Patient Terminal (PT)	Study 2. Sensor based interaction techniques for point-of-care EPR access	Study 3. Comparing paper and PDA-based interaction techniques	Study 4. New mobile point-of-care EPR system for hospitals
Author's role:	Responsible for the study	Similar research design as in study 1	Co-responsible for the study and advisor	Patient actor. Partly involved in planning
Solutions evaluated:	7 solutions (PDA + PT) 1 baseline (PT only)	2 location-based and 2 screen-based solutions	Paper-based baseline and 3 PDA-based solutions	Paper-based baseline and mobile EPR solution
Participants:	5 pairs consisting of physician and patient actor	5 nurses	14 physicians, 4 patient actors	8 physicians (and 4 nurses)
Patients per scenario:	1 patient	3 patients	1 patient	3 patients
Total no. patient consultations:	40 consultations	60 consultations	56 consultations	24 consultations
Year of study:	2005	2005	2007/2008	2008

@olealsos

Table VIII. Relations between the four studies and the six papers. A dot means that the paper is based on empirical data from the corresponding study.

Studies	Research papers							
	1	2	3	4	5	6	7	8
Study 1. Using handhelds as input device for patient terminal	•	•	•				•	•
Study 2. Sensor based interaction techniques for point-of-care EPR access	•	•	•				•	
Study 3. Comparing paper and PDA-based interaction techniques		•	•	•	•	•	•	•
Study 4. New mobile point-of-care EPR system for hospitals				•				

Table IX. The relation between research papers and research questions.

Research questions	Research papers							
	1	2	3	4	5	6	7	8
(1) Effects of mobile systems on doctor-patient communication				•	•	•	•	
(2) Designing guidelines for mobile point-of-care systems				•	•	•	•	
(3) Methods for lab-based usability evaluations	•	•	•				•	•

Exposure variables

BMI (kg/m²):

- 1.No parents overweight (BMI < 25); *ref.cat.*
- 2.Mother overweight (BMI ≥25) / Father normal weight (BMI < 25)
- 3.Mother normal weight (BMI < 25) / Father overweight (BMI ≥25)
- 4.Both parents overweight (BMI ≥25)

Waist Circumference (WC):

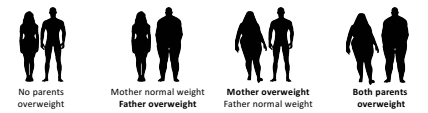
- 1.No parents overweight (WC mother < 80 cm and WC father < 94 cm); *ref.cat.*
- 2.Mother overweight (WC ≥ 80 cm) / Father normal weight (WC < 94 cm)
- 3.Mother normal weight (WC < 80 cm) / Father overweight (WC ≥ 94)
- 4.Both parents overweight (WC mother ≥ 80 cm and WC father ≥ 94 cm)

Før

@olealsos

Exposure variables

Etter



		No parents overweight	Mother normal weight Father overweight	Mother overweight Father normal weight	Both parents overweight
BMI (kg/m ²)	Mother	BMI < 25	BMI < 25	BMI ≥ 25	BMI ≥ 25
	Father	BMI < 25	BMI ≥ 25	BMI < 25	BMI ≥ 25
Waist Circumference (WC) (cm)	Mother	WC < 80	WC < 80	WC ≥ 80	WC ≥ 80
	Father	WC < 94	WC ≥ 94	WC < 94	WC ≥ 94

@olealsos

