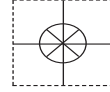


1 YEAR
WARRANTY

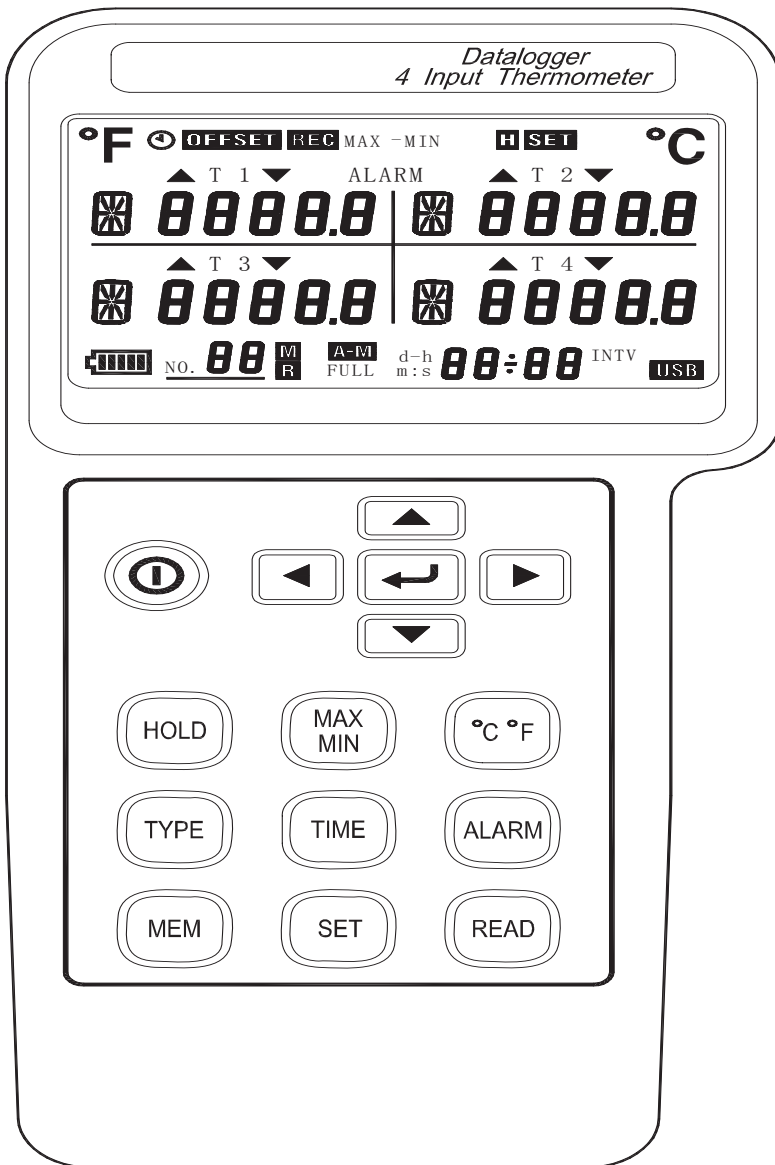


Made in Taiwan



User's Guide

DATALOGGER 4 INPUT THERMOMETER HH1384 SOFTWARE MANUAL



Shop online at

omega.com

Ω OMEGA®

omega.com

e-mail: info@omega.com

For latest product manuals:

omegamanual.info

ISO 9001
CERTIFIED
CORPORATE QUALITY
STAMFORD, CT

ISO 9001
CERTIFIED
CORPORATE QUALITY
MANCHESTER, UK

SOFTWARE MANUAL for HH1384

RS232 Protocol.....	2
Hardware Requirements and Setup.....	4
Software Requirements and Setup.....	5
On-Line Operation	8
Run the Software	8
Record.....	10
Download.....	12
Erase Data Logger	14
Data Convert.....	15
Apply for Excel.....	15
Apply for Graph.....	17
Sampling Time.....	18
RTC.....	19
Auto Power Off.....	20
Alarm Range.....	21

RS-232 Protocol

19200,N,8,1

On Line Transfer (8 bytes data to PC)

Byte1	Byte2	Byte3	Byte4	Byte5	Byte6	Byte7	Byte8
Start 02	Status1	Status2	Status3	Fahrenheit			Stop 03

Details:

(1) Start byte 02 (Byte1)

(2) Status1 (Byte2)

bit7	bit6	bit5	bit4	bit3	bit2	bit0~1	
Full	Auto Rec.	No.99	Auto pwr off	BT	0:C 1:F	0:T1	1:T2 2:T3 3:T4

(3) Status2 (Byte3)

bit7	bit6	bit5	bit4	bit0~bit3										
Reserved	reserved	hold	read	0:K	1:J	2:E	3:T	4:R	5:S	6:N	7:L	8:U	9:B	10:C

(4) Status3 (Byte4)

bit7	bit6	bit5	bit4	bit3	bit2	bit0~1	
Reserved	under	over	Out range	plug	rec	0:normal	1:max 2:min 3:max-min

(5) Fahrenheit

Byte5	Byte6	Byte7		
Fahrenheit Integer	bit7: positive	bit4,5: X	bit0~3: Fahrenheit Decimal	

If Positive then Fahrenheit Integer = 65536 - Fahrenheit

(6) Stop Byte 03 (Byte6)

Pre-Order

“A” command:

Byte1	Byte2	Byte3	Byte4	Byte5	Byte6	Byte7
02	Last Add of Auto Rec.s			Manual Rec.s	FF	03

Commands : (after “A” command)

Q : Read Manually Recorded Data

02 + No.s of Rec.s + Data1 + Data2+.....+03

Data : Flg0 + Flg8 + Flg9 + (T1-T4)Type + YYMMDDhhnnss + T1F + T2F + T3F + T4F

(3 Byte + 4 Bytes + 6 Bytes + 3 Bytes x 4)

R : Read Automatically Recorded Data

02 + Last Add + Data1 + Data2+.....+03

Data : 00 55 AA 00 + Flg0 + (T1-T4)Type + YYMMDDhhnnss + Intv + Rec.s

+ Flg8 + Flg9 + (T1F + T2F + T3F + T4F)

+ Flg8 + Flg9 + (T1F + T2F + T3F + T4F)+.....+03

(4 Bytes + 1 Byte + 4 Bytes + 6 Bytes + 1 Bytes + 3 Bytes + 2 Bytes + (3 Bytes x 4)

Flg0:

bit1~7	bit0
Reserved	F

Flg8

bit7	bit4~6	bit3	bit2	bit1	bit0
Out range	Reserved	T4 Plug	T3 Plug	T2 Plug	T1 Plug

Flg9

bit7	bit6	bit5	bit4	bit3	bit2	bit1	bit0
T4 Under	T3 Under	T2 Under	T1 Under	T4 Over	T3 Over	T2 Over	T1 Over

Type

bit4~7	bit0~bit3
Reserved	0:K 1:J 2:E 3:T 4:R 5:S 6:N 7:L 8:U 9:B 10:C

Fahrenheit

Byte1	Byte2	Byte3		
Fahrenheit Integer		bit7: positive	bit4,5: X	bit0~3: Fahrenheit Decimal

S : Set up Date of Meter

“S” + YY + MM + DD (4 Bytes)

T : Set up Time of Meter

“T” + hh + nn + ss (4 Bytes)

X : Read Real Time Clock

02 + YYMMDDhhnnss + 03 (8bytes)

U : Intv

“U” + 0 + 0 + 0 : Read Intv (02 + Intv + 03)

“U” + 1 + Intv + 0: Set up Intv

V : Power-off Time

“V” + 0 + 0 + 0 : Read Power-off Time (02 + Index + 03)

“V” + 1 + Index + 0 : Set up Power-off Time

Index:

0	1	2
5 min	15 min	30 min

W : Button command

“W” + B1 + B2 + B3 : Button Command

B1:

bit7	bit6	bit5	bit4	bit3	bit2	bit1	bit0
TYPE	MEM	MAX	TIME	SET	C / F	Alarm	Read

B2:

bit7	bit6	bit5	bit4	bit3	bit2	bit1	bit0
A.Rec.	Reserved	Down	Right	Enter	Left	Up	Hold

B3:

bit3~bit7	bit2	bit1	bit0
Reserved	Cancel MMA Rec	Clr Auto	Clr Manual

Hardware Requirements and Setup

PC Hardware Requirements :

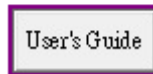
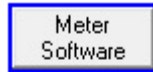
HDD, CD Rom, 486 PC or above, with USB port
EGA or higher monitor
4M bytes or more memory size


PC Hardware Setup :

Connect the Meter with PC by USB cable


Software Requirements and Setup

- 1 Start up windows XP / 7 operating system
- 2 Close all other applications
- 3 Insert the disk in CD drive



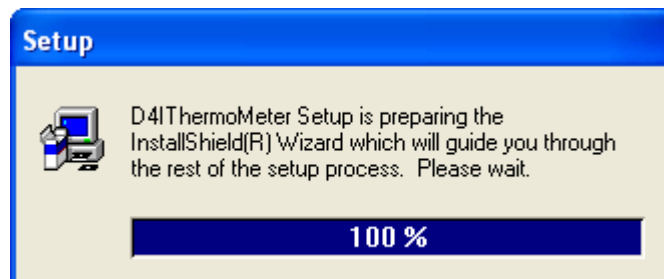
To install USB to Serial driver, click .

Follow the on-screen instructions to set up USB driver.

To install Serial to USB driver, click .

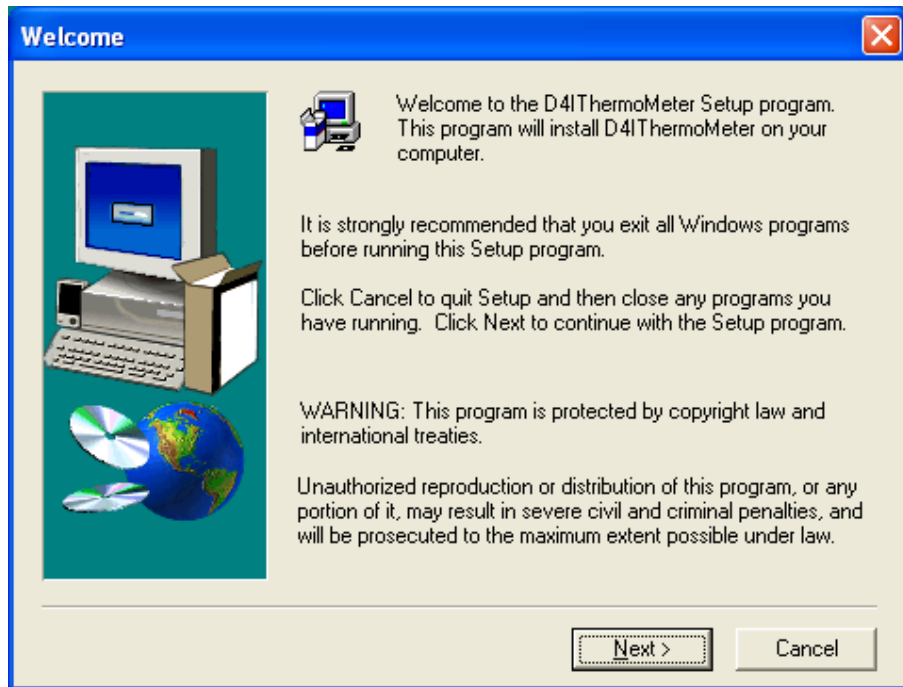
Follow the on-screen instructions.

1).



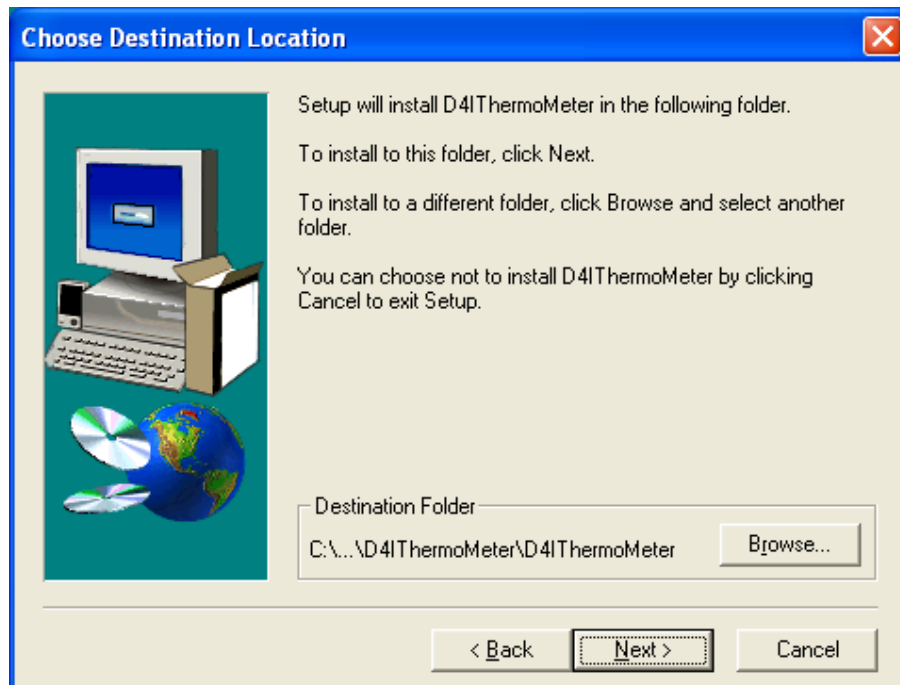
Setup program will run automatically.

2).



Click Next> button

3).

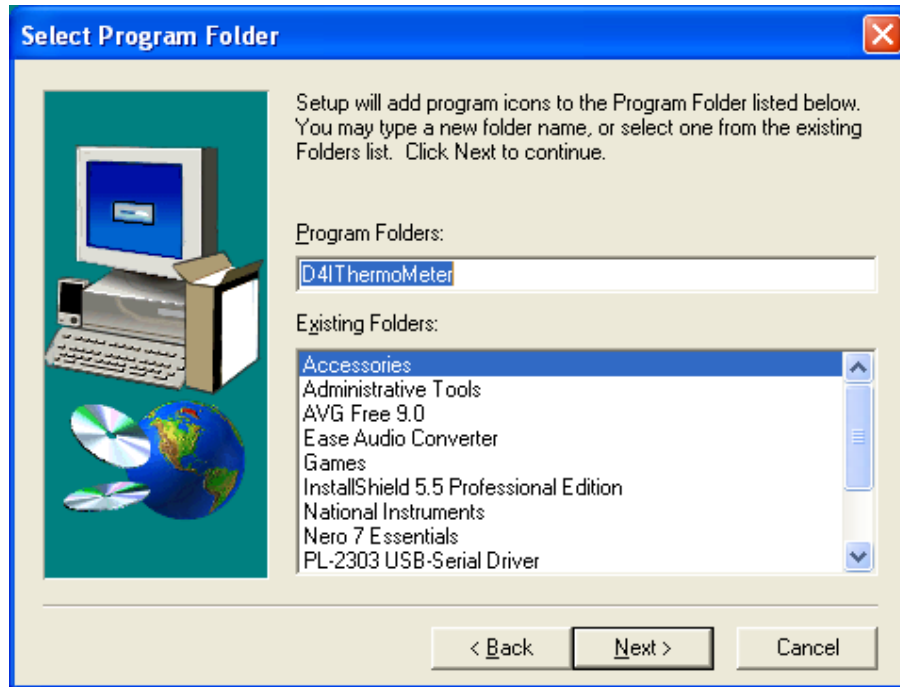


a. Click Next> to use the default folder

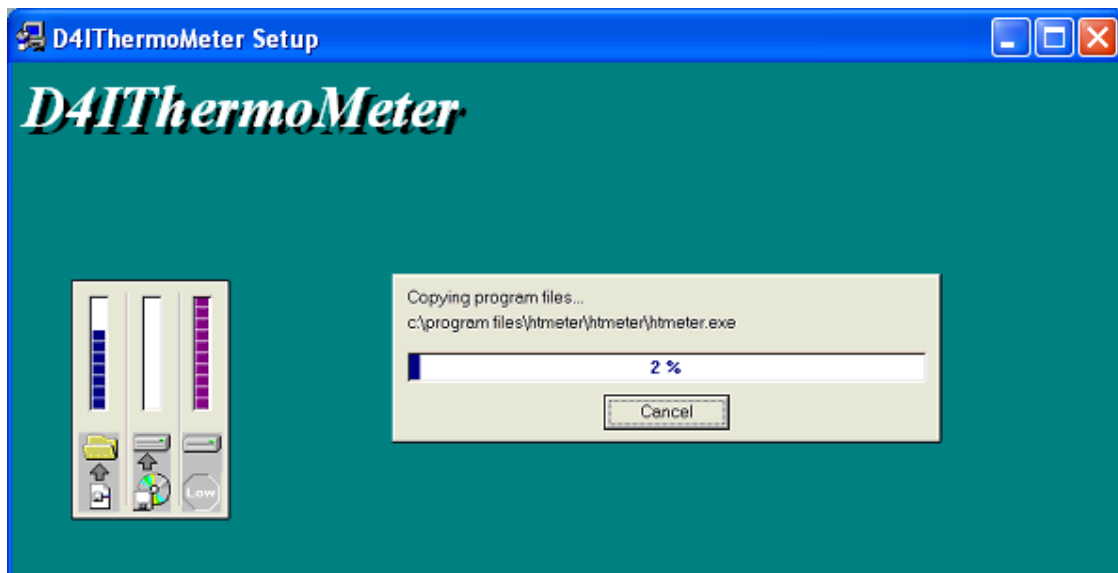
or

b. Click Browse... to select a different folder

4).



Click Next> button

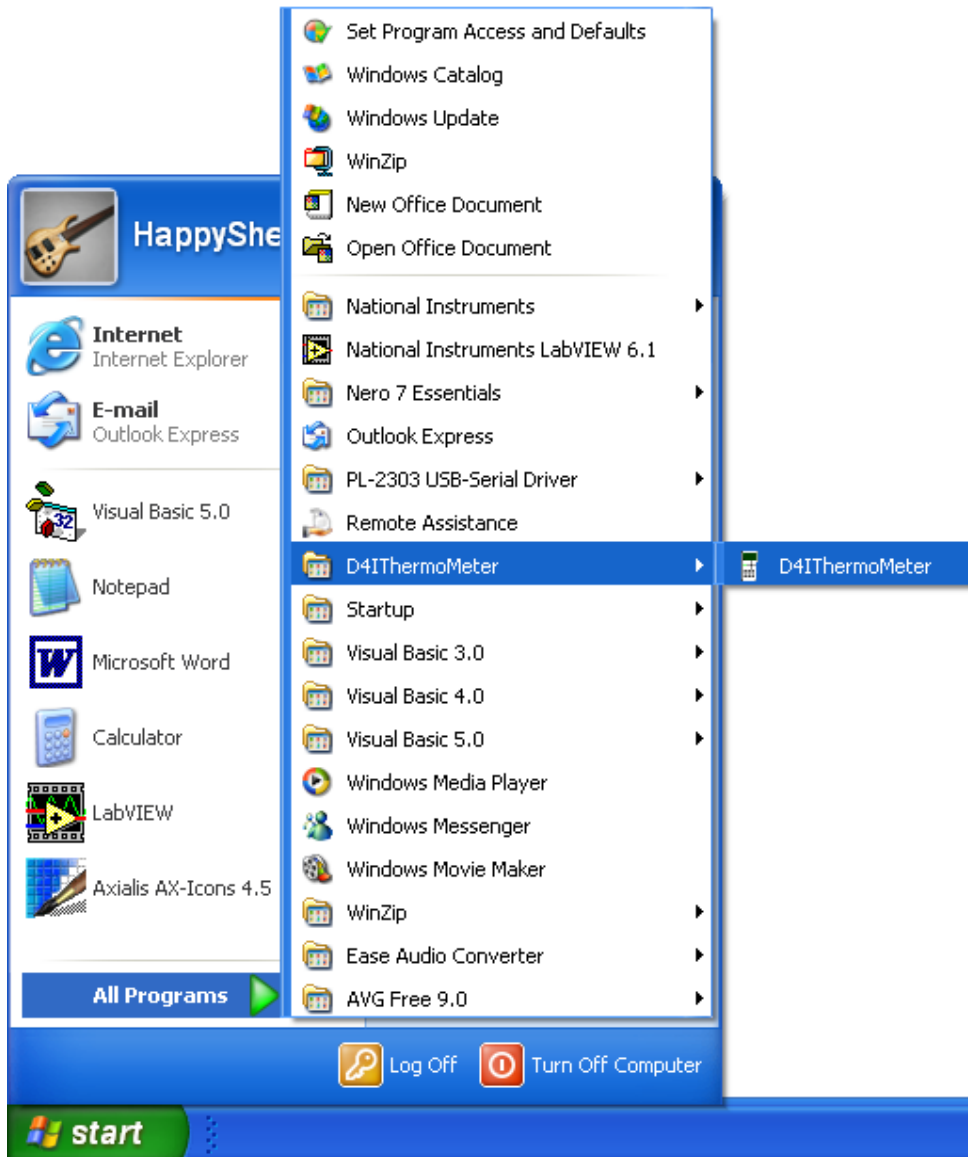


Setup is completed.

On-Line Operation

■ Run the software

1. Click "Start" from Start menu then move to "All Programs" (or "Programs") then "D4IThermoMeter" and then click the "D4IThermoMeter" icon.

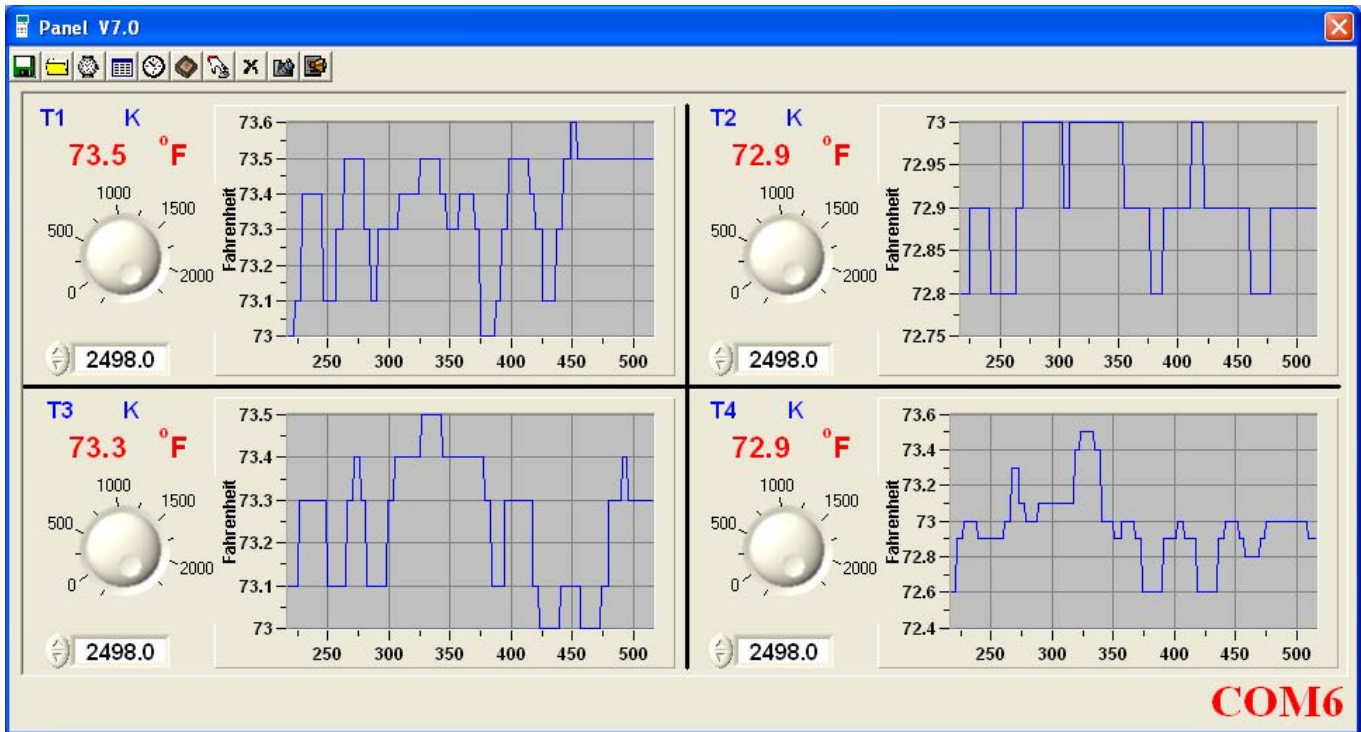


2.

Click an available COM port




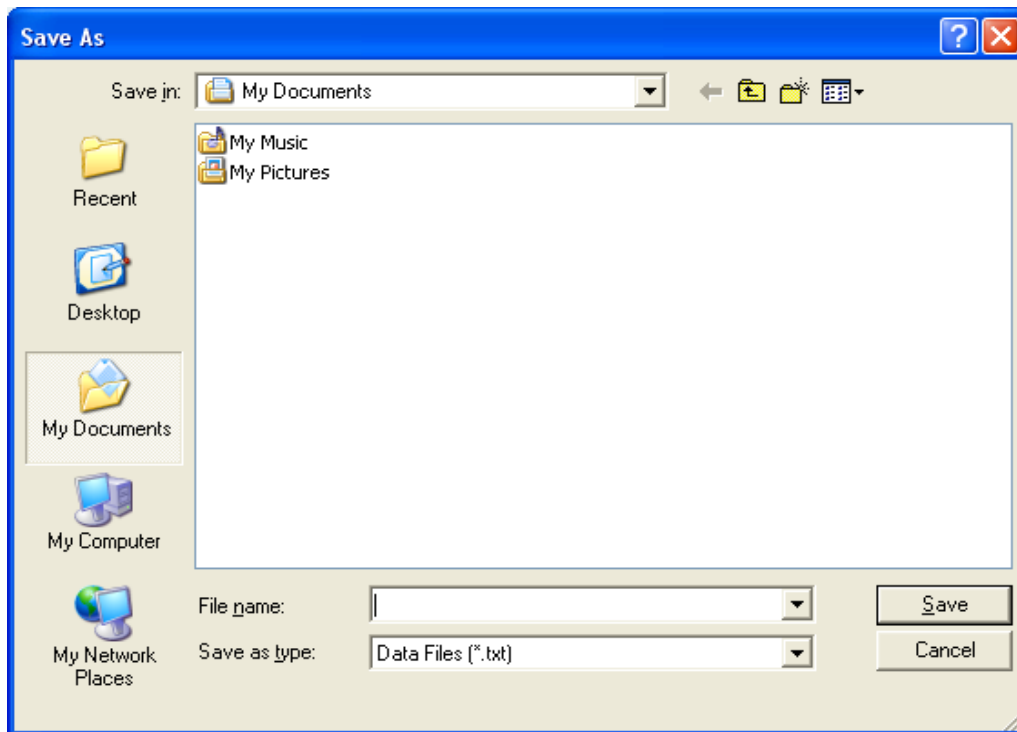
3. Main software screen



■ Record

Save to Hard Disk (PC)


Click  button. The dialog box shown below will appear.



Input a file name and then click "Save" to begin saving data to the file just named.

Rec 19

COM6

Click  button to stop recording.

Save to EEPROM

1. Automatically Record


Keep pressing **MEM** on the meter till **A-M** flashes on LCD to record data. Keep pressing **MEM** again till **A-M** disappears to stop recording.

2. Manually Record

Press the **MEM** on the meter momentarily to store one reading. The **M** then flashes once.

Download Data


1. Download Data from Hard Disk

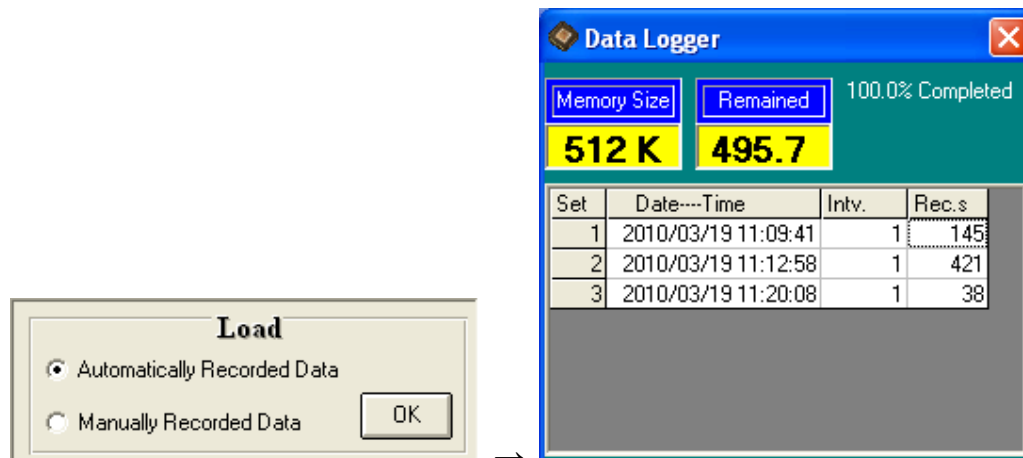
Click  button. The Open window, shown below, appears



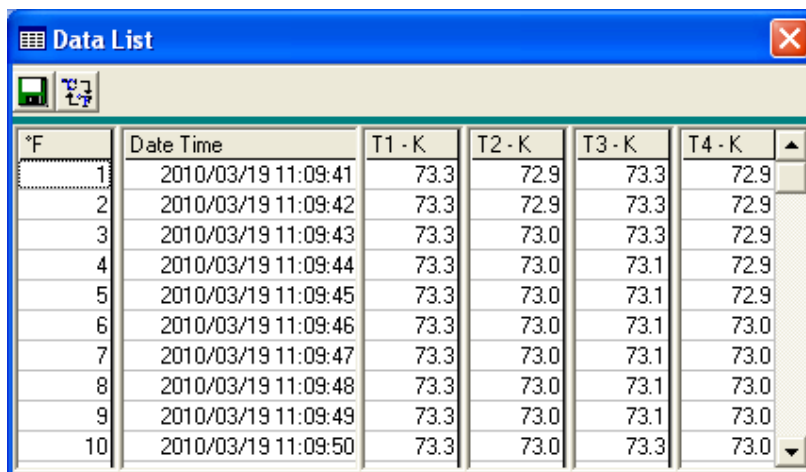
Input the file that was selected earlier and then click the Open button.

2. Download Data from EEPROM

Click  button. The Load window, shown below, will open.

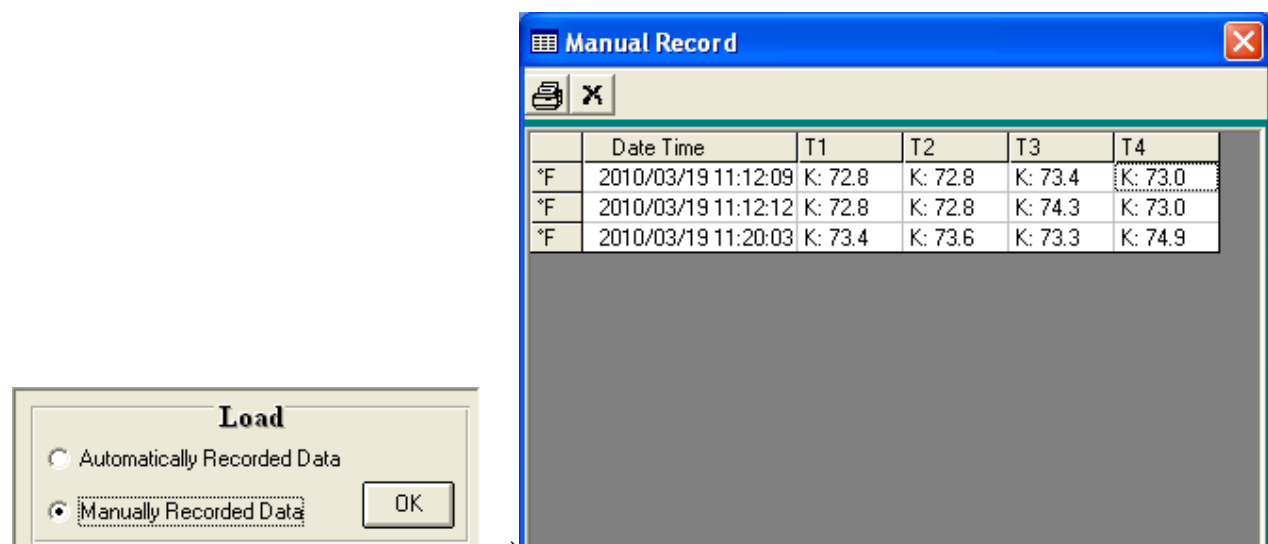


Click on a SET number to view the set's details. For example, in the window above, there are 3 sets from which to choose. The list below side is an example of an opened set.




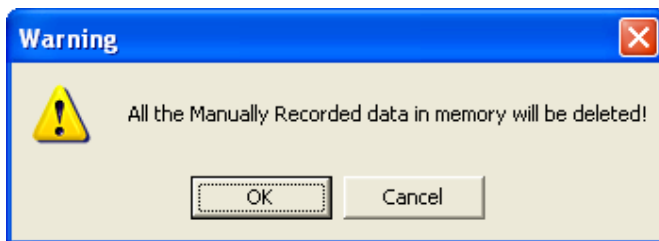
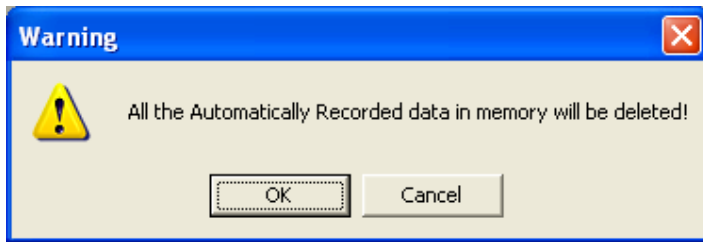
°F	Date Time	T1 - K	T2 - K	T3 - K	T4 - K
1	2010/03/19 11:09:41	73.3	72.9	73.3	72.9
2	2010/03/19 11:09:42	73.3	72.9	73.3	72.9
3	2010/03/19 11:09:43	73.3	73.0	73.3	72.9
4	2010/03/19 11:09:44	73.3	73.0	73.1	72.9
5	2010/03/19 11:09:45	73.3	73.0	73.1	72.9
6	2010/03/19 11:09:46	73.3	73.0	73.1	73.0
7	2010/03/19 11:09:47	73.3	73.0	73.1	73.0
8	2010/03/19 11:09:48	73.3	73.0	73.1	73.0
9	2010/03/19 11:09:49	73.3	73.0	73.1	73.0
10	2010/03/19 11:09:50	73.3	73.0	73.3	73.0

To read manually recorded data, select Manually Recorded data then Press OK to confirm.



■ Erase Memory

Click  button. The dialog box, shown below, will open.

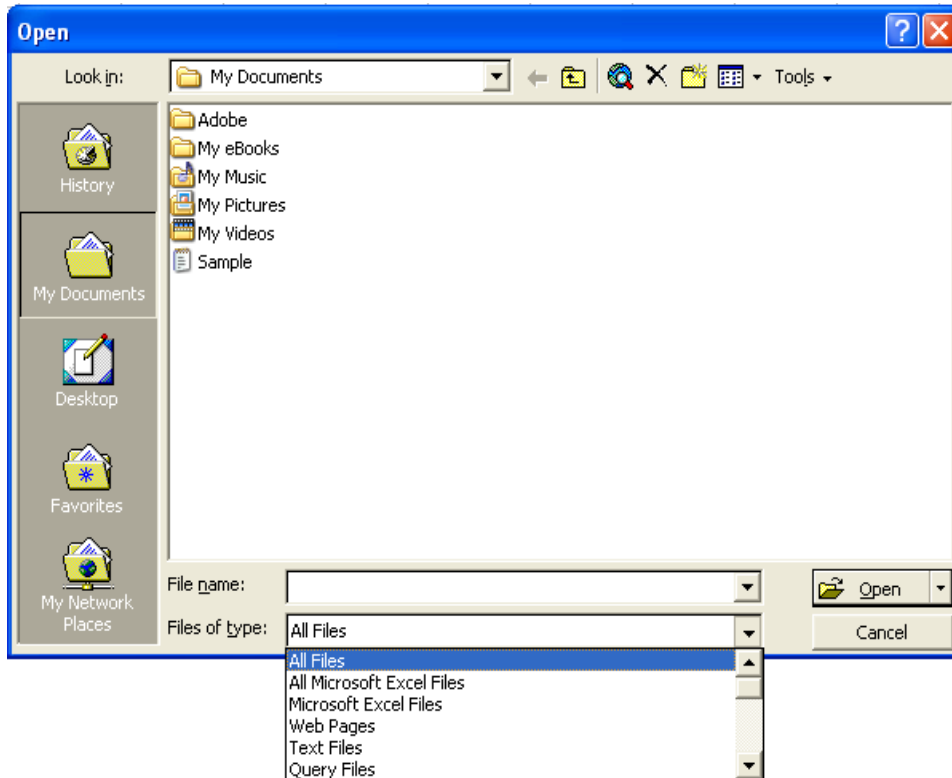


Press **OK** button to confirm.

■ Data Convert

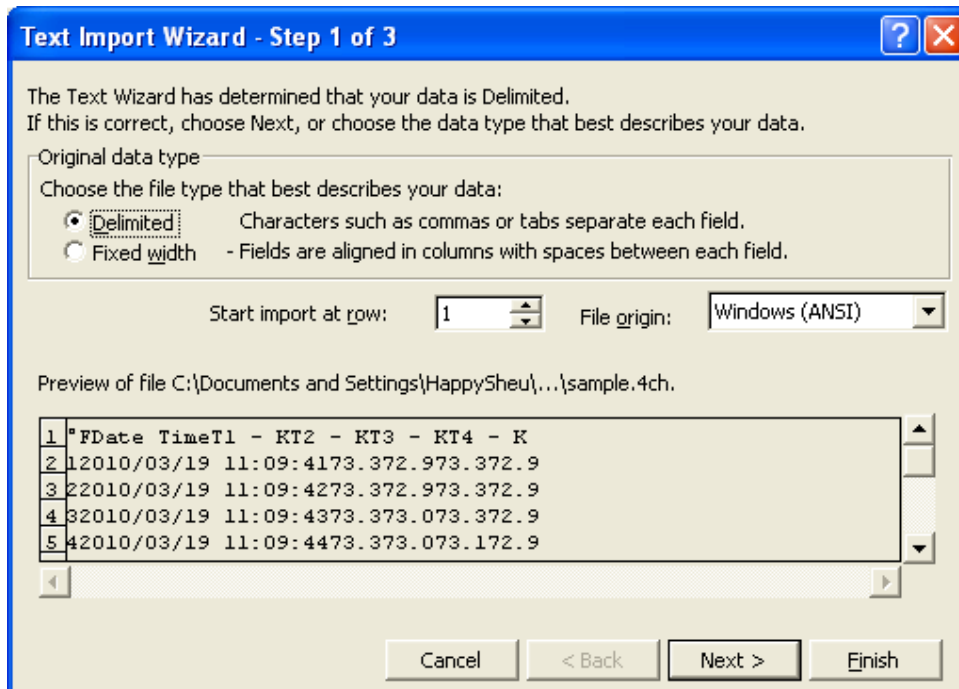
Apply for Excel

Open Microsoft Excel, find the file saved in Excel type, for example, test.xls.

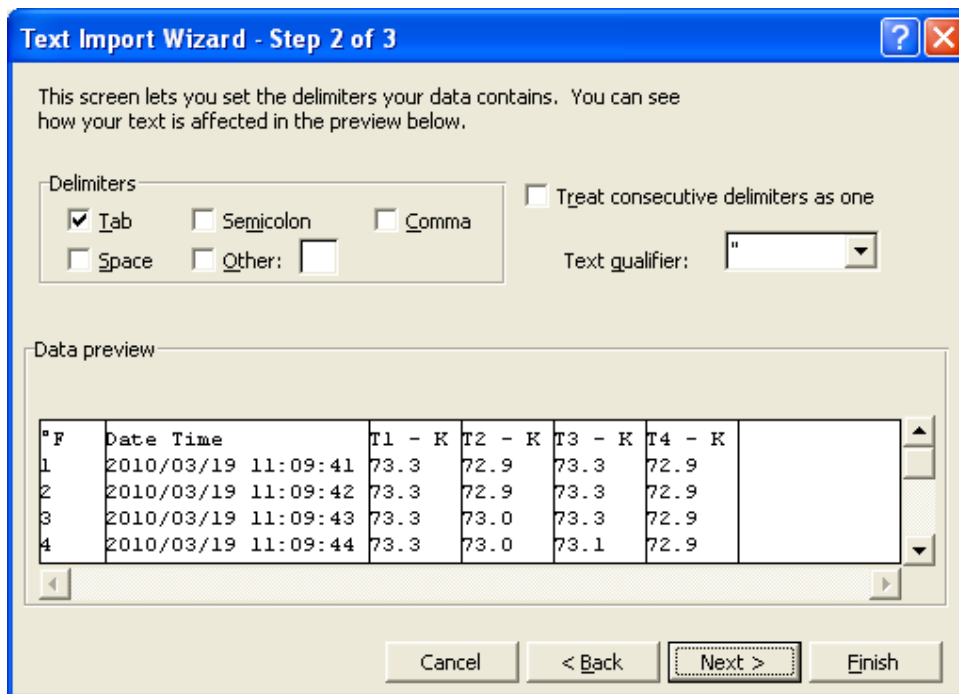


or find any file already saved in HDD, for example, sample.dat.

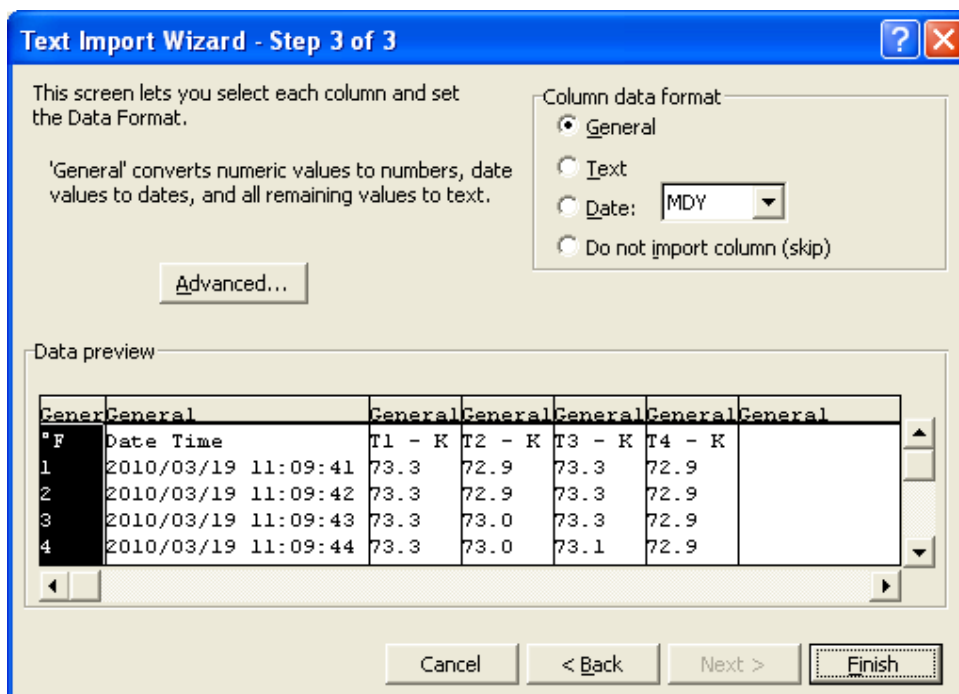
The "Text Import Wizard" then appears. Follow the steps 1 to 3 to complete.



Click Next> button



Click Next> button

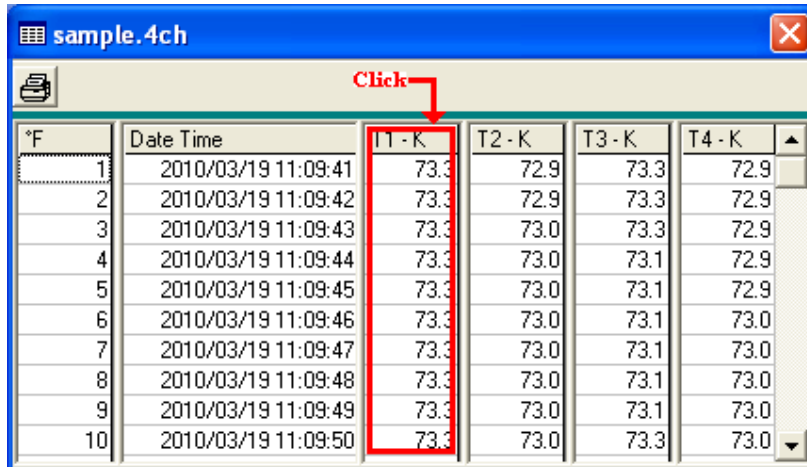


Click **Finish** button

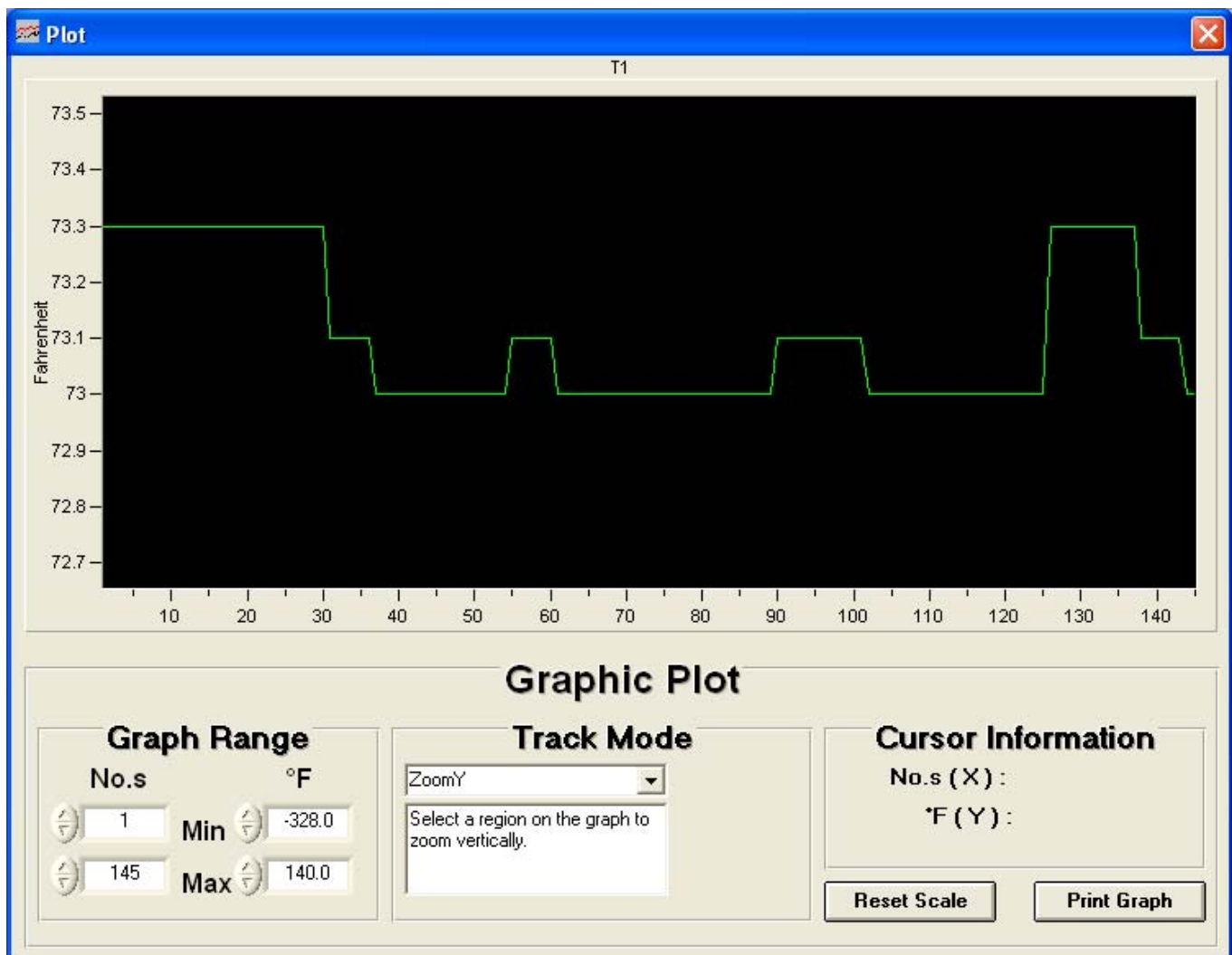
	A	B	C	D	E	F
1	°F	Date Time	T1 - K	T2 - K	T3 - K	T4 - K
2	1	3/19/2010 11:09	73.3	72.9	73.3	72.9
3	2	3/19/2010 11:09	73.3	72.9	73.3	72.9
4	3	3/19/2010 11:09	73.3	73	73.3	72.9
5	4	3/19/2010 11:09	73.3	73	73.1	72.9

Apply for Graph

Open a saved data file in the software program and then select a channel to confirm.




°F	Date Time	T1 - K	T2 - K	T3 - K	T4 - K
1	2010/03/19 11:09:41	73.3	72.9	73.3	72.9
2	2010/03/19 11:09:42	73.3	72.9	73.3	72.9
3	2010/03/19 11:09:43	73.3	73.0	73.3	72.9
4	2010/03/19 11:09:44	73.3	73.0	73.1	72.9
5	2010/03/19 11:09:45	73.3	73.0	73.1	72.9
6	2010/03/19 11:09:46	73.3	73.0	73.1	73.0
7	2010/03/19 11:09:47	73.3	73.0	73.1	73.0
8	2010/03/19 11:09:48	73.3	73.0	73.1	73.0
9	2010/03/19 11:09:49	73.3	73.0	73.1	73.0
10	2010/03/19 11:09:50	73.3	73.0	73.3	73.0

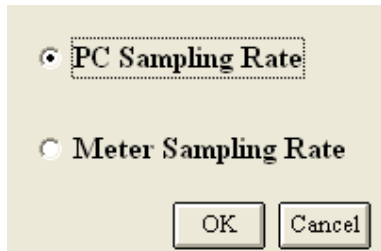


Sampling Time

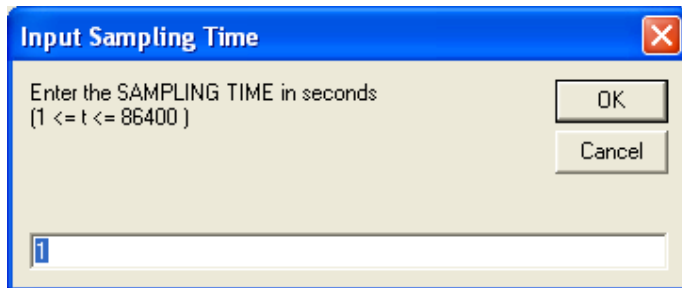
PC Sampling Rate:

(rate at which the PC collects readings while connected to the meter)

Click  on the **Menu Bar**.




Choose "PC Sampling Rate" and then click "OK" button.

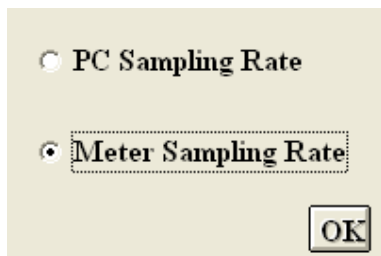


In the **Input Sampling Time** dialog box, input a sampling time and then click "OK" button to confirm.

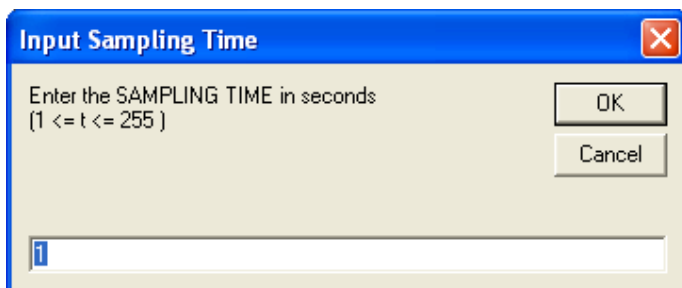
Meter Sampling Rate:

(rate at which meter stores readings)

Click  on the **Menu Bar**.




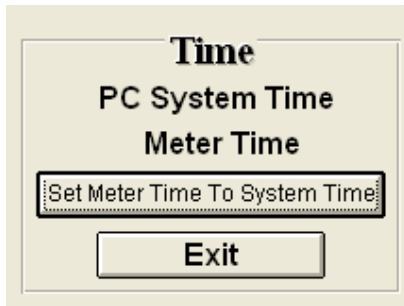
Choose "PC Sampling Rate" and then click "OK" button.



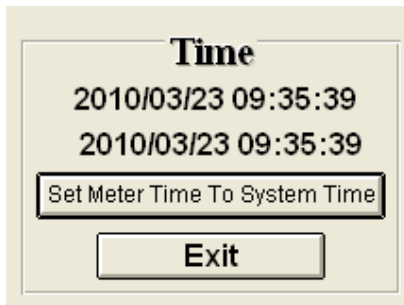
Input a sampling time and then click "OK" button to confirm.


■ RTC (Real Time Clock)

Click  on the **Menu Bar** to set the meter time to PC system time.




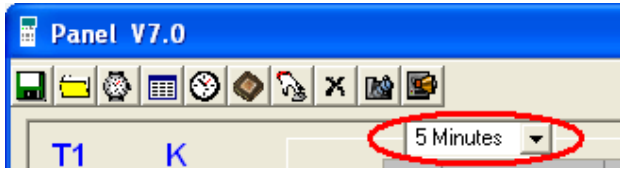
Click **PC System Time** to show PC System Time or **Meter Time** to show Meter Time.



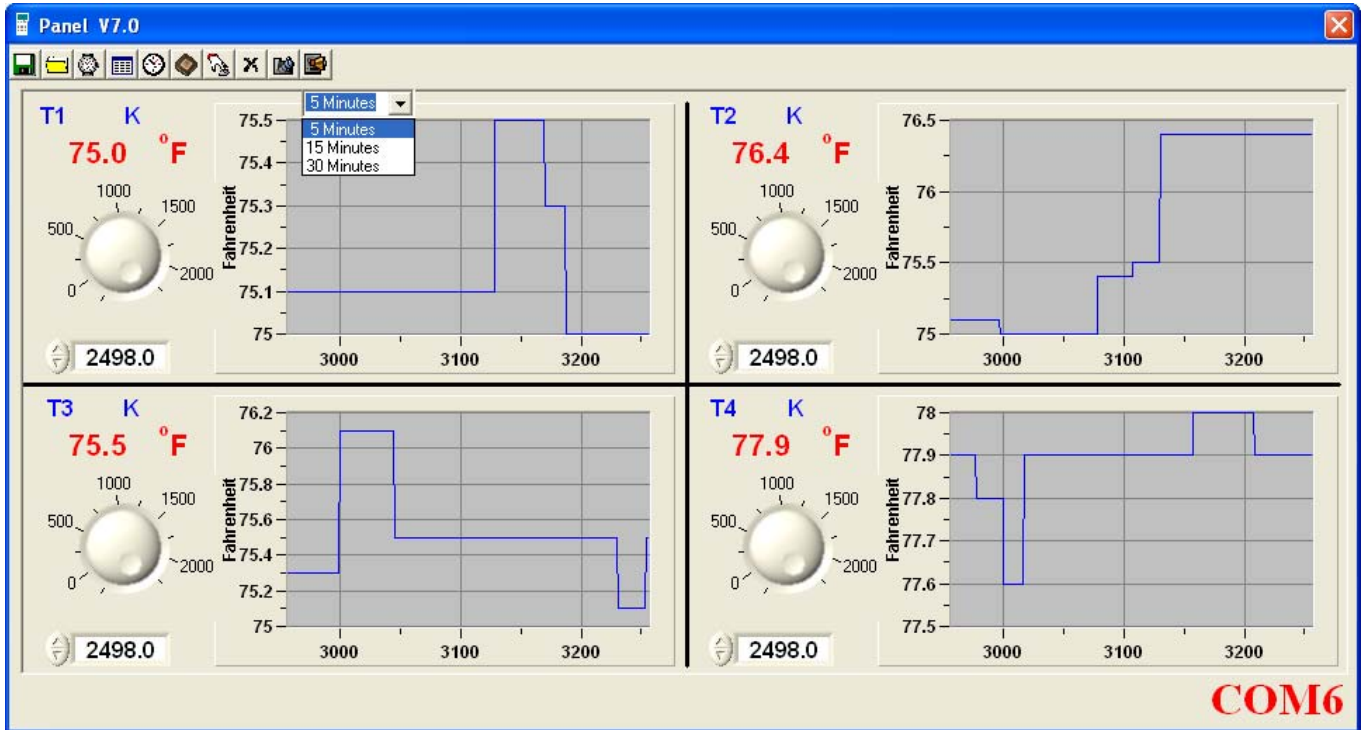
Click  to set the meter time to PC system time.

■ Auto Power Off


Click  on the **Menu Bar**. The window shown below will appear.

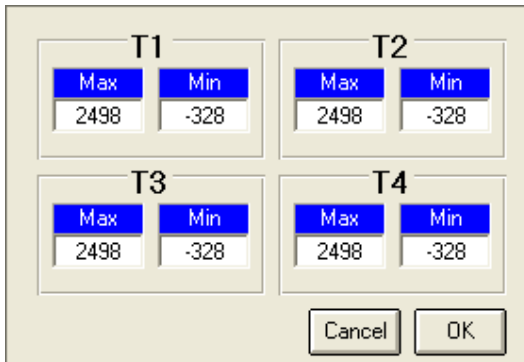


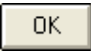
Select an expected power-off Time to confirm.

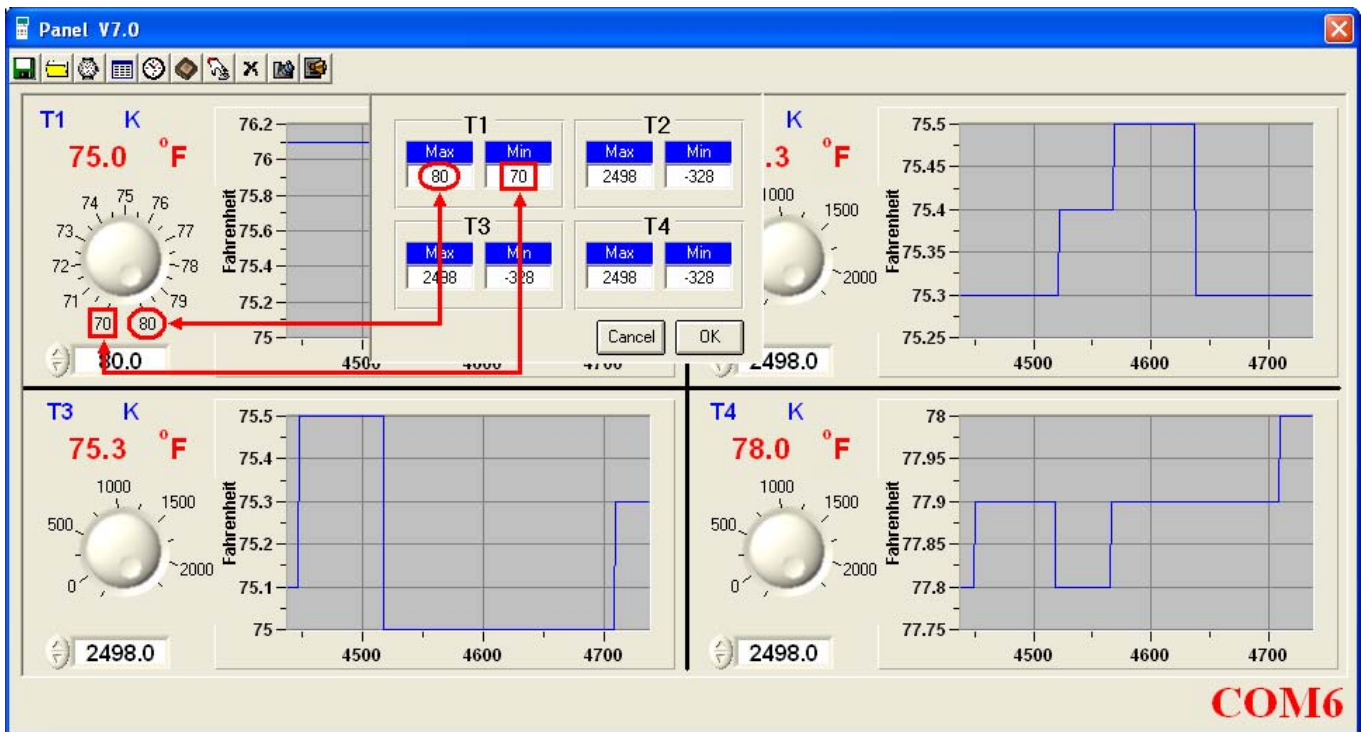


■ Alarm Range

Click  on the **Menu Bar**. The window shown below will appear.



Change the alarm range and then press  to confirm.





OMEGAnet® Online Service omega.com	Internet e-mail info@omega.com
---	---

Servicing North America:

U.S.A.: ISO 9001 Certified Omega Engineering, Inc., One Omega Drive, P.O. Box 4047
Stamford, CT 06907-0047
Toll-Free: 1-800-826-6342 Tel: (203) 359-1660
FAX: (203) 359-7700 e-mail: info@omega.com

Canada: 976 Bergar
Laval (Quebec), Canada H7L 5A1
Toll-Free: 1-800-826-6342 TEL: (514) 856-6928
FAX: (514) 856-6886 e-mail: info@omega.ca

For immediate technical or application assistance:

U.S.A. and Canada: Sales Service: 1-800-826-6342/1-800-TC-OMEGA®
Customer Service: 1-800-622-2378/1-800-622-BEST®
Engineering Service: 1-800-872-9436/1-800-USA-WHEN®

Mexico: En Español: 001 (203) 359-7803 FAX: (001) 203-359-7807
info@omega.com.mx e-mail: espanol@omega.com

Servicing Europe:

Benelux: Managed by the United Kingdom Office
Toll-Free: 0800 099 3344 TEL: +31 20 347 21 21
FAX: +31 20 643 46 43 e-mail: sales@omega.nl

Czech Republic: Frystatska 184
733 01 Karviná, Czech Republic
Toll-Free: 0800-1-66342 TEL: +420-59-6311899
FAX: +420-59-6311114 e-mail: info@omegashop.cz

France: Managed by the United Kingdom Office
Toll-Free: 0800 466 342 TEL: +33 (0) 161 37 29 00
FAX: +33 (0) 130 57 54 27 e-mail: sales@omega.fr

Germany/Austria: Daimlerstrasse 26
D-75392 Deckenpfronn, Germany
Toll-Free: 0 800 6397678 TEL: +49 (0) 7059 9398-0
FAX: +49 (0) 7056 9398-29 e-mail: info@omega.de

United Kingdom: ISO 9001 Certified OMEGA Engineering Ltd.
One Omega Drive, River Bend Technology Centre, Northbank
Irlam, Manchester M44 5BD England
Toll-Free: 0800-488-488 TEL: +44 (0)161 777-6611
FAX: +44 (0)161 777-6622 e-mail: sales@omega.co.uk

It is the policy of OMEGA Engineering, Inc. to comply with all worldwide safety and EMC/EMI regulations that apply. OMEGA is constantly pursuing certification of its products to the European New Approach Directives. OMEGA will add the CE mark to every appropriate device upon certification.

The information contained in this document is believed to be correct, but OMEGA accepts no liability for any errors it contains, and reserves the right to alter specifications without notice.

WARNING: These products are not designed for use in, and should not be used for, human applications.

WARRANTY/DISCLAIMER

OMEGA ENGINEERING, INC. warrants this unit to be free of defects in materials and workmanship for a period of **13 months** from date of purchase. OMEGA's WARRANTY adds an additional one (1) month grace period to the normal **one (1) year product warranty** to cover handling and shipping time. This ensures that OMEGA's customers receive maximum coverage on each product.

If the unit malfunctions, it must be returned to the factory for evaluation. OMEGA's Customer Service Department will issue an Authorized Return (AR) number immediately upon phone or written request. Upon examination by OMEGA, if the unit is found to be defective, it will be repaired or replaced at no charge. OMEGA's WARRANTY does not apply to defects resulting from any action of the purchaser, including but not limited to mishandling, improper interfacing, operation outside of design limits, improper repair, or unauthorized modification. This WARRANTY is VOID if the unit shows evidence of having been tampered with or shows evidence of having been damaged as a result of excessive corrosion; or current, heat, moisture or vibration; improper specification; misapplication; misuse or other operating conditions outside of OMEGA's control. Components in which wear is not warranted, include but are not limited to contact points, fuses, and triacs.

OMEGA is pleased to offer suggestions on the use of its various products. However, OMEGA neither assumes responsibility for any omissions or errors nor assumes liability for any damages that result from the use of its products in accordance with information provided by OMEGA, either verbal or written. OMEGA warrants only that the parts manufactured by the company will be as specified and free of defects. OMEGA MAKES NO OTHER WARRANTIES OR REPRESENTATIONS OF ANY KIND WHATSOEVER, EXPRESSED OR IMPLIED, EXCEPT THAT OF TITLE, AND ALL IMPLIED WARRANTIES INCLUDING ANY WARRANTY OF MERCHANTABILITY AND FITNESS FOR A PARTICULAR PURPOSE ARE HEREBY DISCLAIMED. LIMITATION OF LIABILITY: The remedies of purchaser set forth herein are exclusive, and the total liability of OMEGA with respect to this order, whether based on contract, warranty, negligence, indemnification, strict liability or otherwise, shall not exceed the purchase price of the component upon which liability is based. In no event shall OMEGA be liable for consequential, incidental or special damages.

CONDITIONS: Equipment sold by OMEGA is not intended to be used, nor shall it be used: (1) as a "Basic Component" under 10 CFR 21 (NRC), used in or with any nuclear installation or activity; or (2) in medical applications or used on humans. Should any Product(s) be used in or with any nuclear installation or activity, medical application, used on humans, or misused in any way, OMEGA assumes no responsibility as set forth in our basic WARRANTY/DISCLAIMER language, and, additionally, purchaser will indemnify OMEGA and hold OMEGA harmless from any liability or damage whatsoever arising out of the use of the Product(s) in such a manner.

RETURN REQUESTS/INQUIRIES

Direct all warranty and repair requests/inquiries to the OMEGA Customer Service Department. **BEFORE RETURNING ANY PRODUCT(S) TO OMEGA, PURCHASER MUST OBTAIN AN AUTHORIZED RETURN (AR) NUMBER FROM OMEGA'S CUSTOMER SERVICE DEPARTMENT (IN ORDER TO AVOID PROCESSING DELAYS).** The assigned AR number should then be marked on the outside of the return package and on any correspondence.

The purchaser is responsible for shipping charges, freight, insurance and proper packaging to prevent breakage in transit.

FOR **WARRANTY** RETURNS, please have the following information available BEFORE contacting OMEGA:

1. Purchase Order number under which the product was PURCHASED,
2. Model and serial number of the product under warranty, and
3. Repair instructions and/or specific problems relative to the product.

FOR **NON-WARRANTY** REPAIRS, consult OMEGA for current repair charges. Have the following information available BEFORE contacting OMEGA:

1. Purchase Order number to cover the COST of the repair,
2. Model and serial number of the product, and
3. Repair instructions and/or specific problems relative to the product.

OMEGA's policy is to make running changes, not model changes, whenever an improvement is possible. This affords our customers the latest in technology and engineering.

OMEGA is a registered trademark of OMEGA ENGINEERING, INC.

© Copyright 2009 OMEGA ENGINEERING, INC. All rights reserved. This document may not be copied, photocopied, reproduced, translated, or reduced to any electronic medium or machine-readable form, in whole or in part, without the prior written consent of OMEGA ENGINEERING, INC.

Where Do I Find Everything I Need for Process Measurement and Control? **OMEGA...Of Course!**

Shop online at omega.comSM

TEMPERATURE

- ☑ Thermocouple, RTD & Thermistor Probes, Connectors, Panels & Assemblies
- ☑ Wire: Thermocouple, RTD & Thermistor
- ☑ Calibrators & Ice Point References
- ☑ Recorders, Controllers & Process Monitors
- ☑ Infrared Pyrometers

PRESSURE, STRAIN AND FORCE

- ☑ Transducers & Strain Gages
- ☑ Load Cells & Pressure Gages
- ☑ Displacement Transducers
- ☑ Instrumentation & Accessories

FLOW/LEVEL

- ☑ Rotameters, Gas Mass Flowmeters & Flow Computers
- ☑ Air Velocity Indicators
- ☑ Turbine/Paddlewheel Systems
- ☑ Totalizers & Batch Controllers

pH/CONDUCTIVITY

- ☑ pH Electrodes, Testers & Accessories
- ☑ Benchtop/Laboratory Meters
- ☑ Controllers, Calibrators, Simulators & Pumps
- ☑ Industrial pH & Conductivity Equipment

DATA ACQUISITION

- ☑ Data Acquisition & Engineering Software
- ☑ Communications-Based Acquisition Systems
- ☑ Plug-in Cards for Apple, IBM & Compatibles
- ☑ Datalogging Systems
- ☑ Recorders, Printers & Plotters

HEATERS

- ☑ Heating Cable
- ☑ Cartridge & Strip Heaters
- ☑ Immersion & Band Heaters
- ☑ Flexible Heaters
- ☑ Laboratory Heaters

ENVIRONMENTAL MONITORING AND CONTROL

- ☑ Metering & Control Instrumentation
- ☑ Refractometers
- ☑ Pumps & Tubing
- ☑ Air, Soil & Water Monitors
- ☑ Industrial Water & Wastewater Treatment
- ☑ pH, Conductivity & Dissolved Oxygen Instruments