

PV inverters

As3 _ sliding shading devices (PV integrated) automatic?

M1 _ shading door (manual)

hvac compact unit

monitoring system user interface

Av1 _ ventilation valves (automatic)

M2 _ shading door (manual)

As2 _ sliding shading devices (PV integrated) automatic?

water tanks

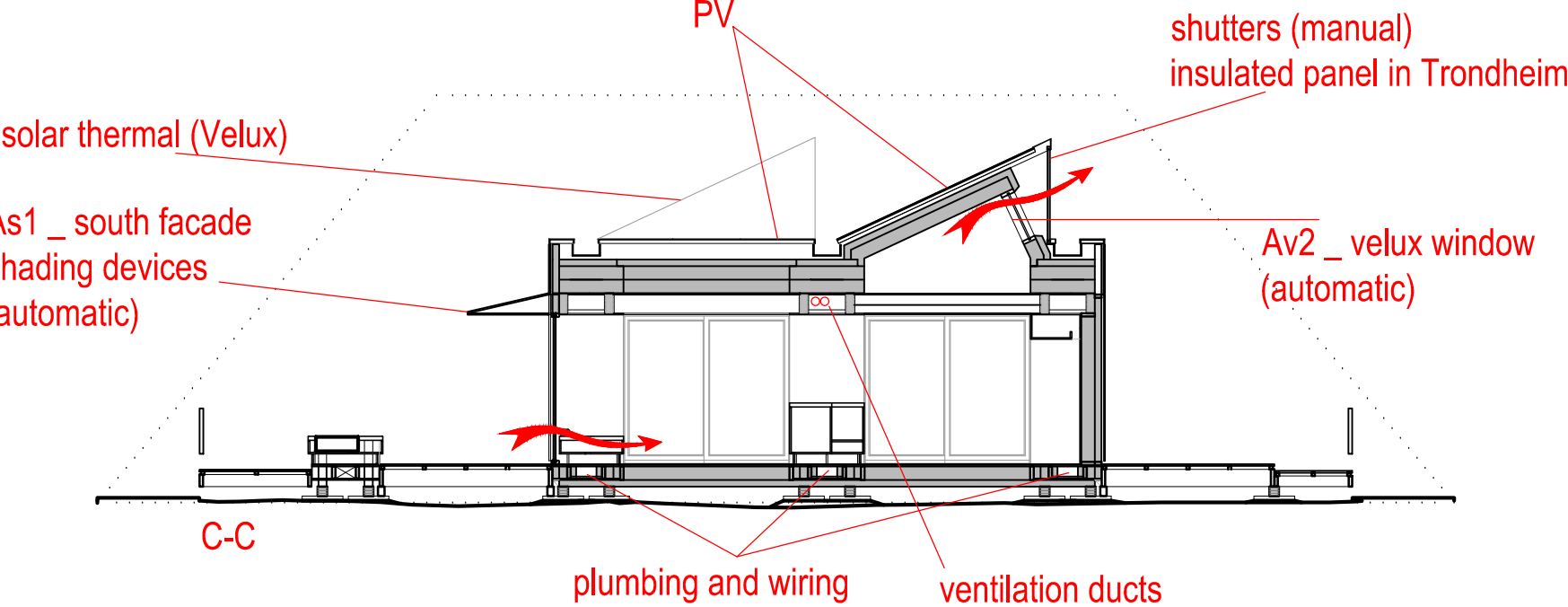
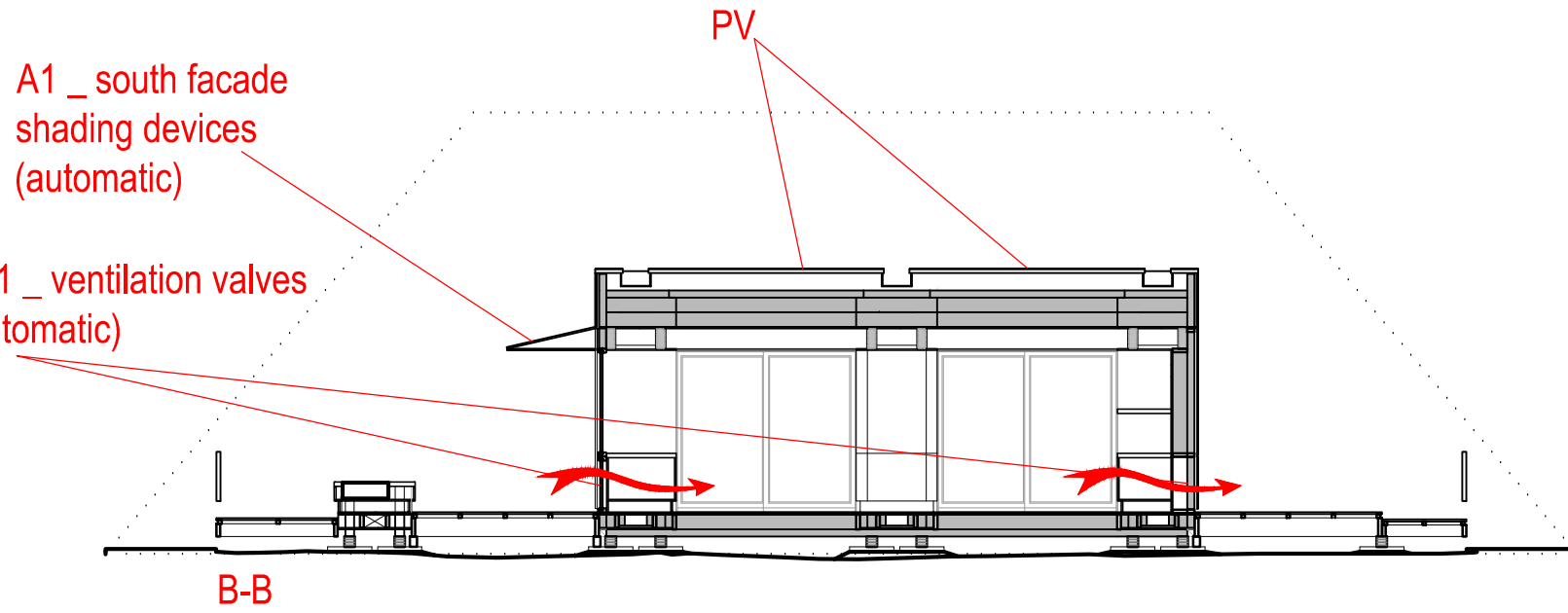
As1 _ shading device (automatic)

PLAN

sliding doors (entrance) manual

Av1 _ ventilation valves (automatic)

sliding doors (greenhouse in-between) manual

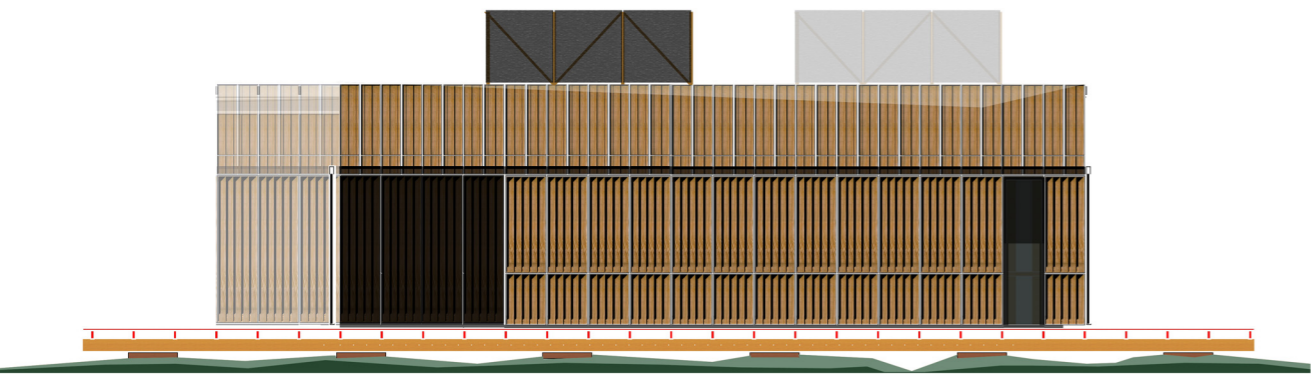


AUTOMATIZED ELEMENTS

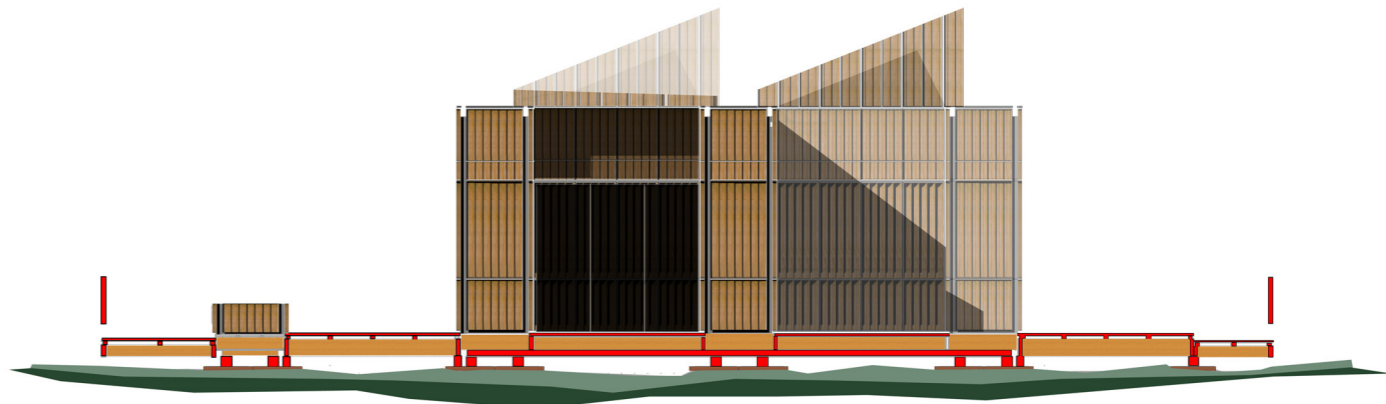
- As1 _ south facade shading devices
(closed when sun striking south facade or if required)
- As2 _ east facade shading devices
(closed when sun striking in summer time _ sunrise)
- As3 _ west facade shading devices
(closed when sun striking west facade _ sunset)
- Av1 _ cross ventilation valves
- Av2 _ velux window north facing skylight
(natural ventilation during day _ external temperature $20 < T < 25$)
(natural ventilation during night _ night purge ventilation
in combination with PCM)

MANUAL ELEMENTS

- M1 _ entrance shading door (closed shaded space)
- M2 _ room shading door (east facing) (when required)



south facade (closed)



east facade (closed)



south facade (open)



east facade (open)