

sykkeltorget

GRUPPE B3
Kristine, Karin og Camilla

Intensjon

Få flere til å sykle.
Gjøre sykkelen synlig i Trondheim.
Sykkeltorget er samlingsstedet.

Visjon

Sykkeltorget skal

- være synlig i byen
- være inviterende
- være et orienteringspunkt i bygget
- bidra til visuell kontakt
- være fleksibelt

Sjikt

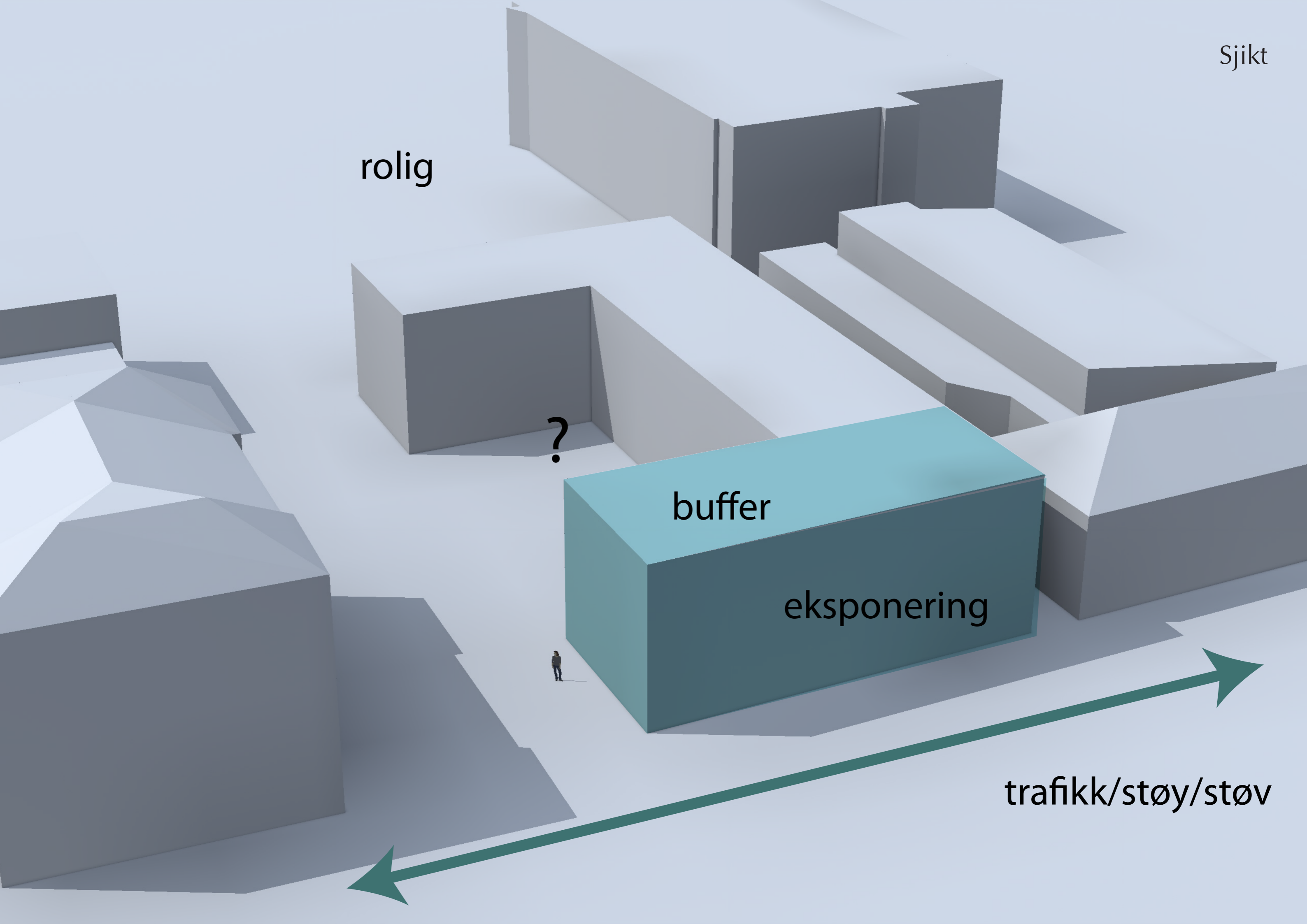
rolig

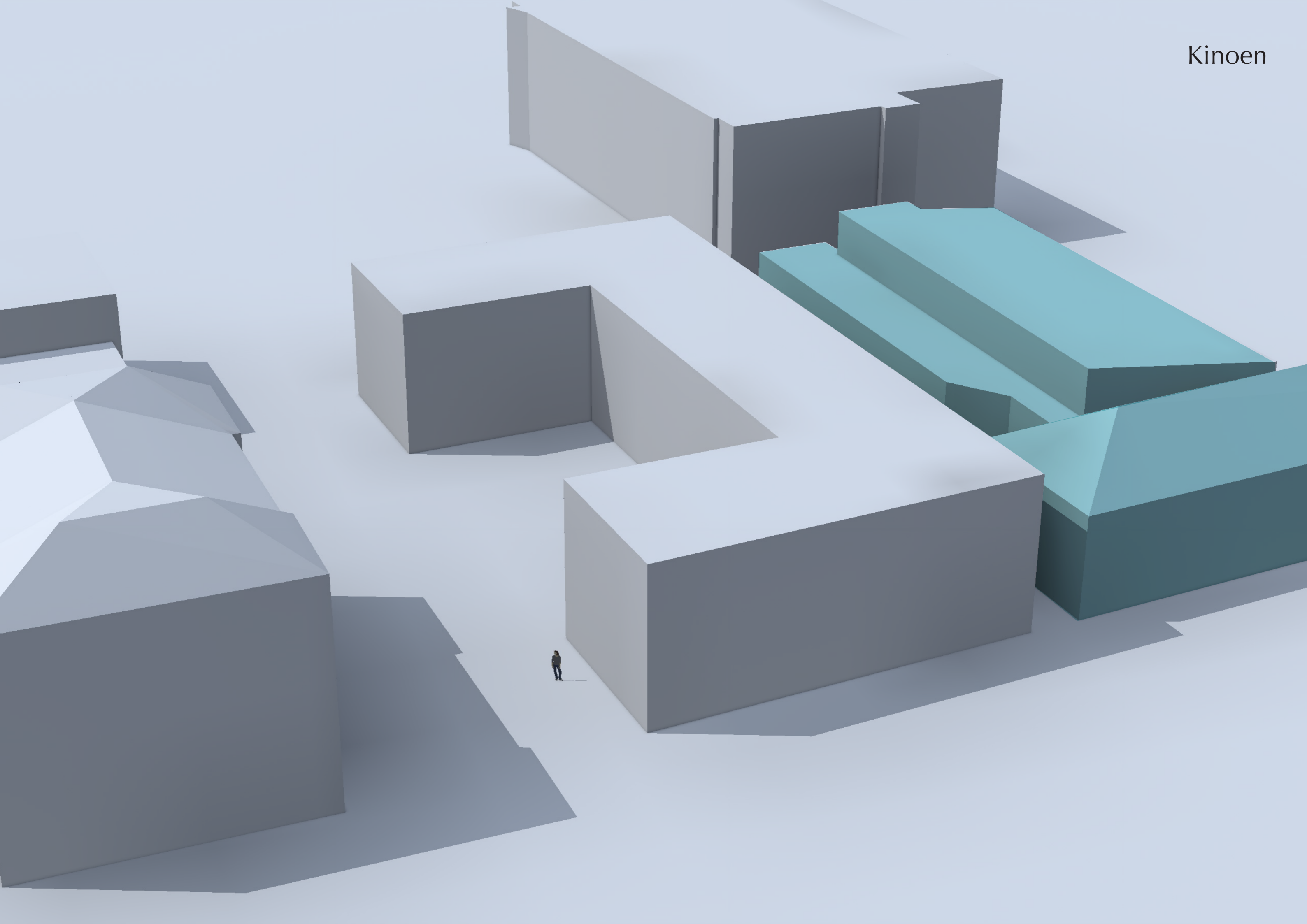
?

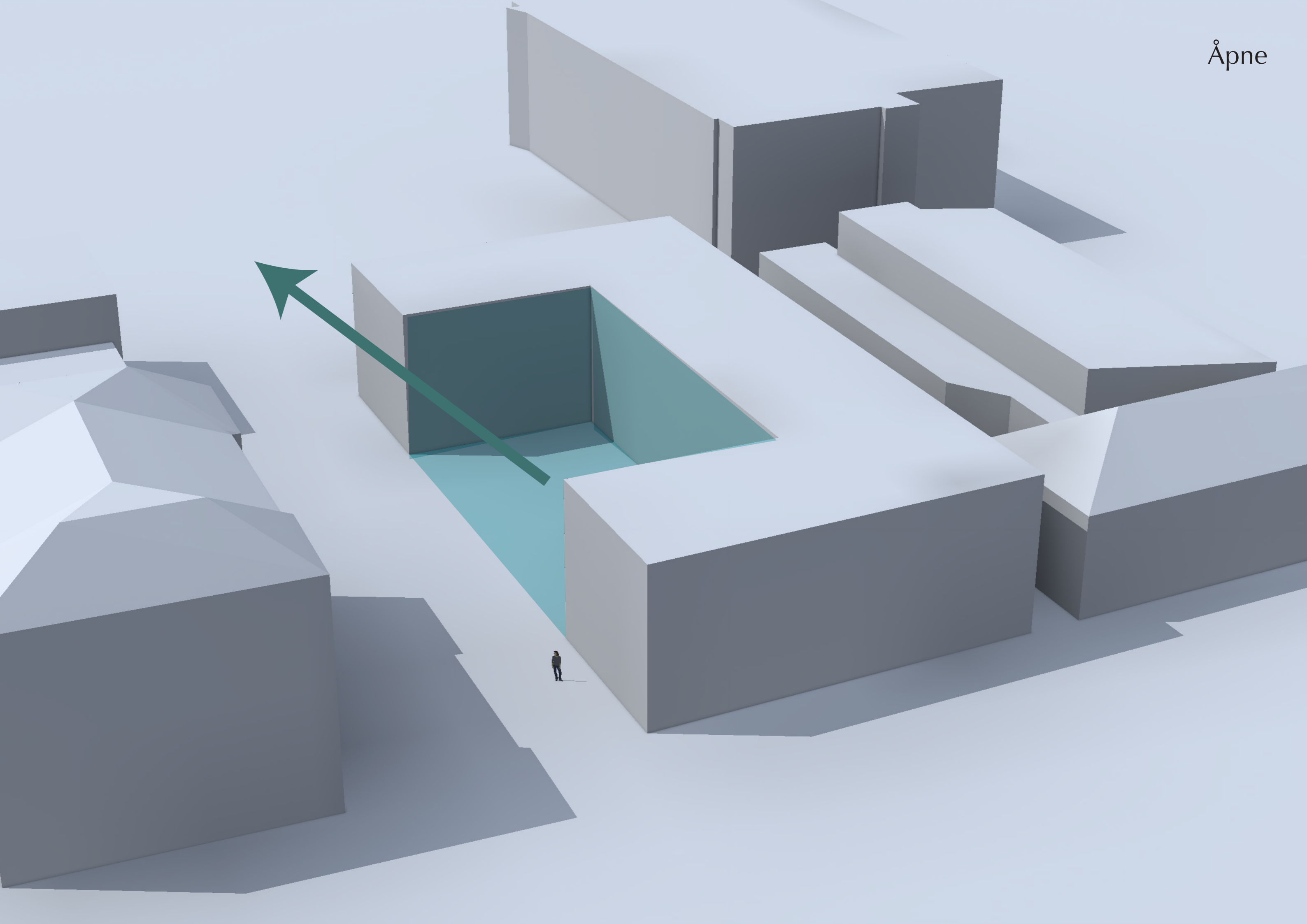
buffer

eksponering

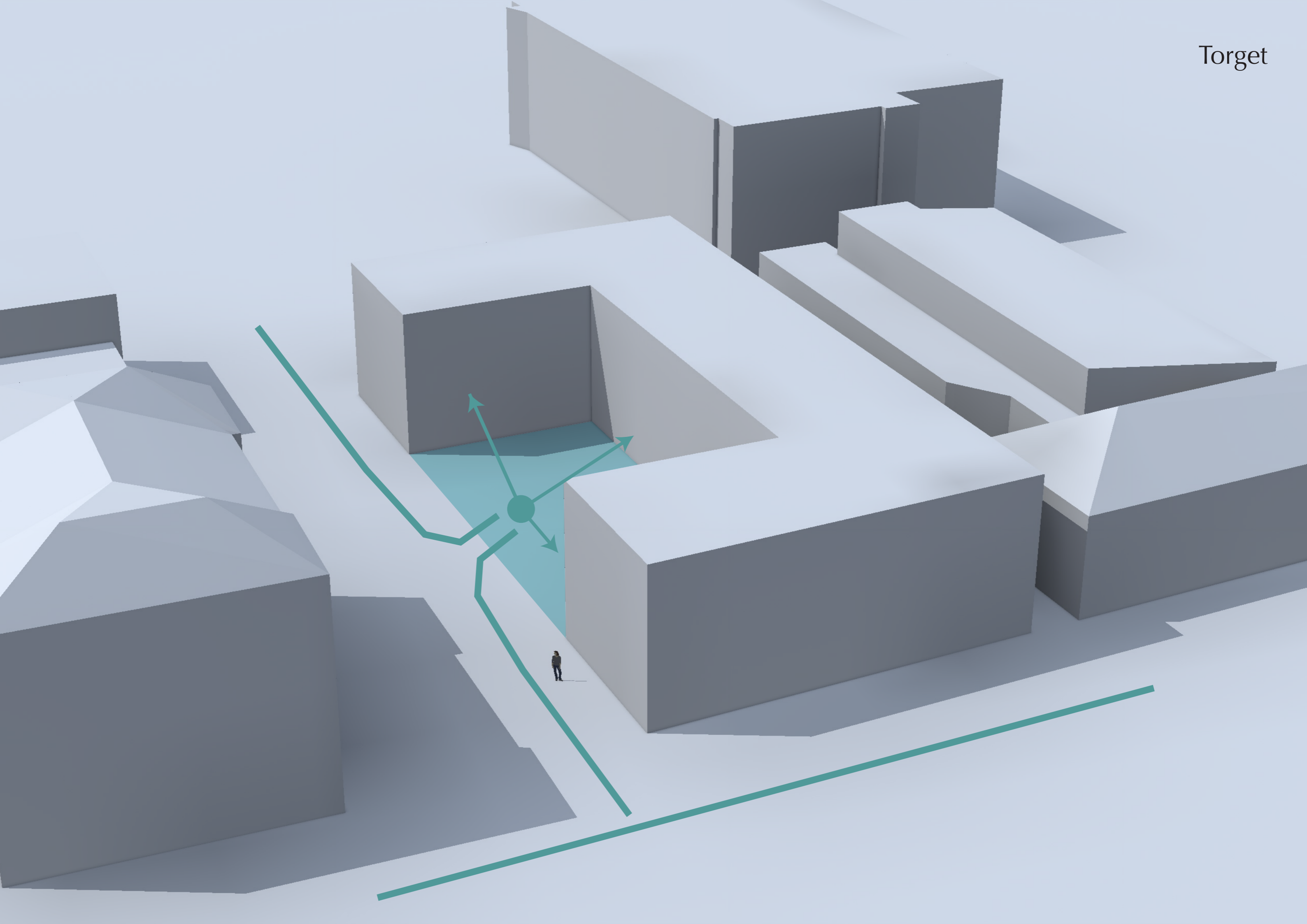
trafikk/støy/støv

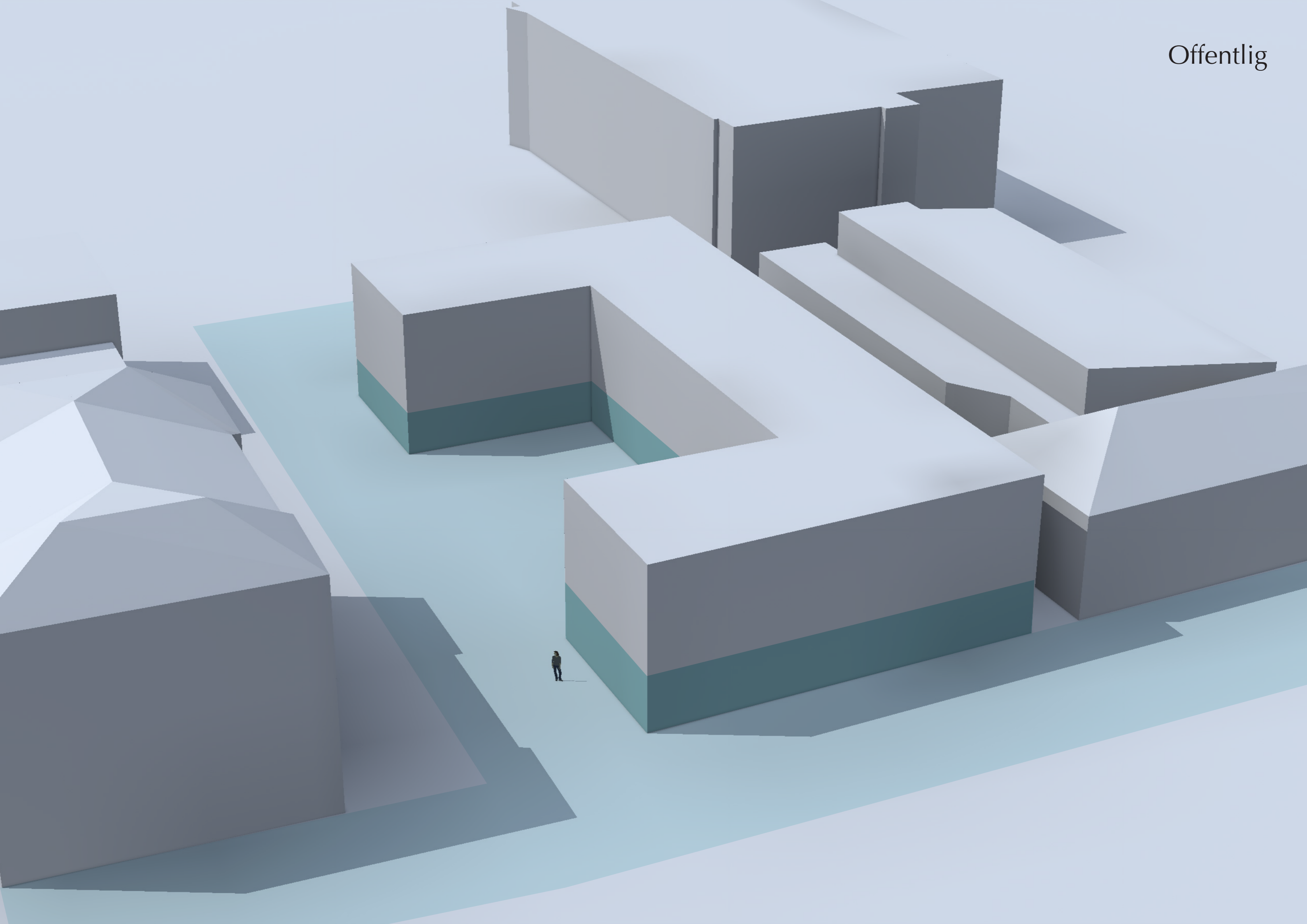






Target





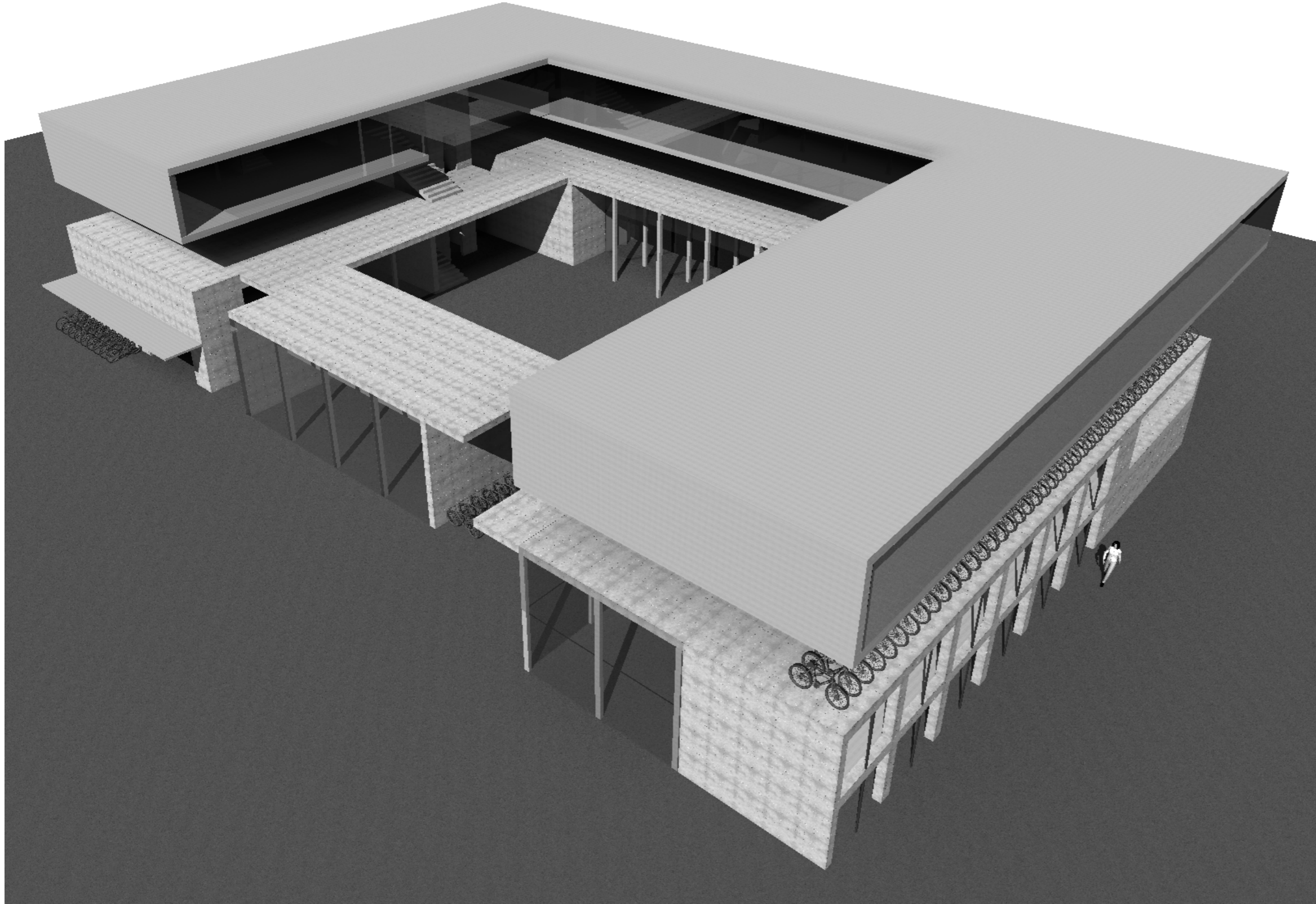
Tre forslag

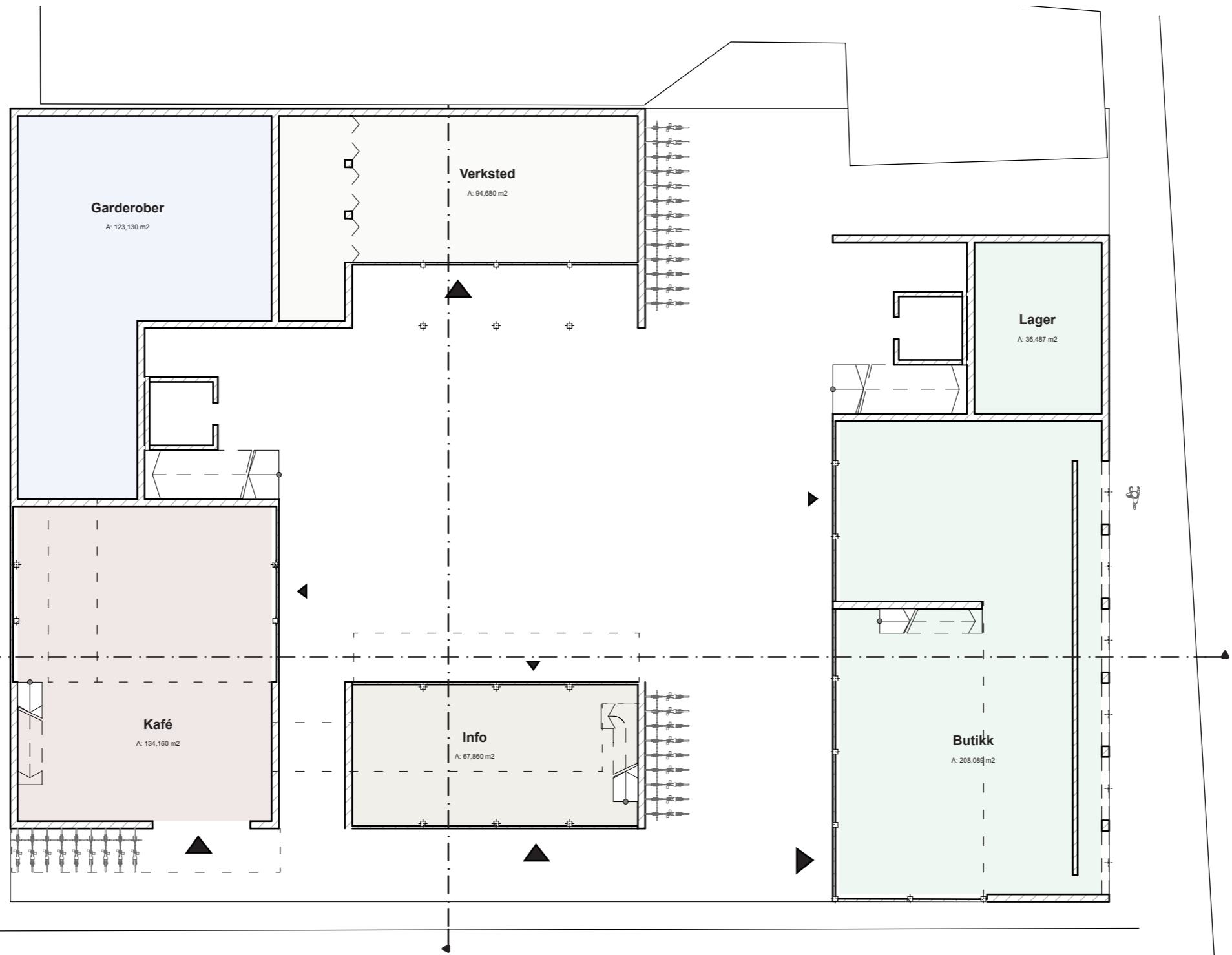
Sykkelbyen

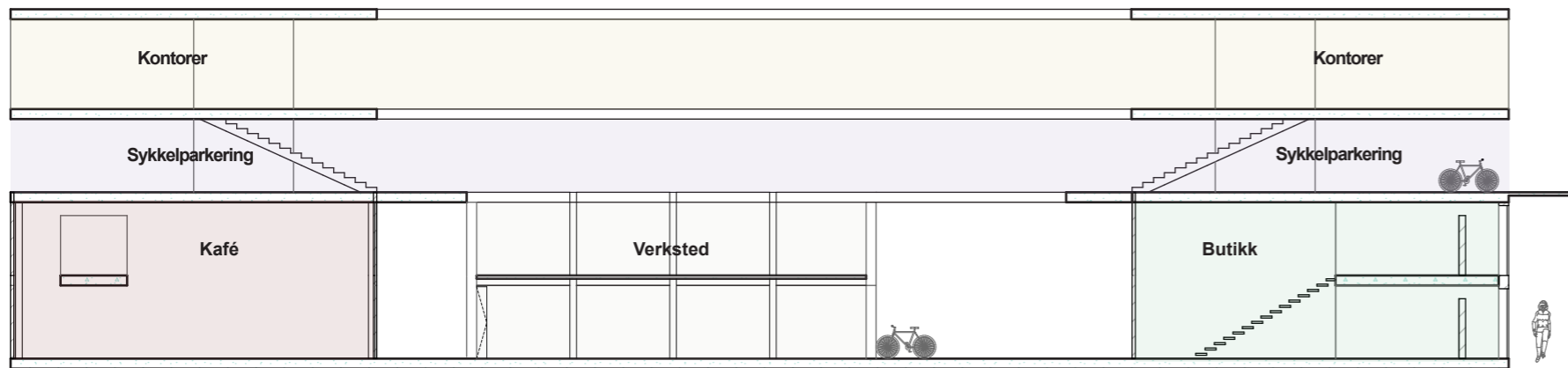
Ramper til taket

Sykkeltrær

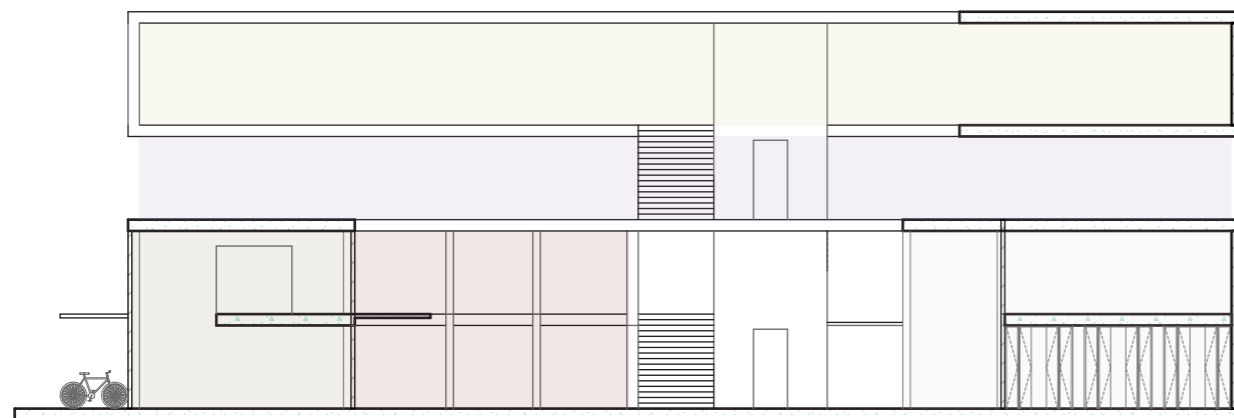
Sykkelbyen



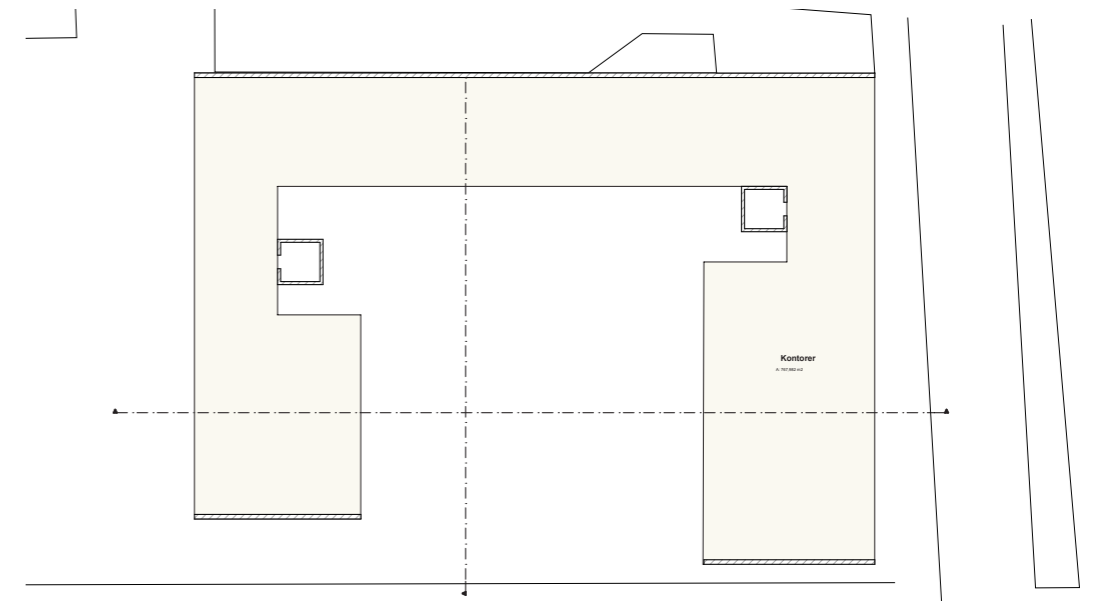




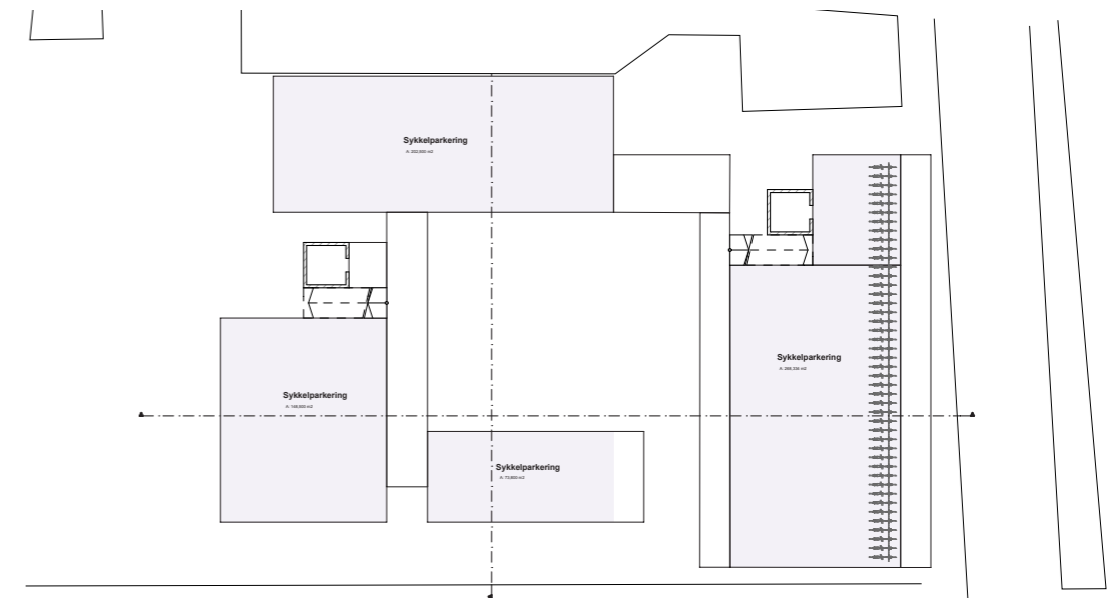
langsnitt



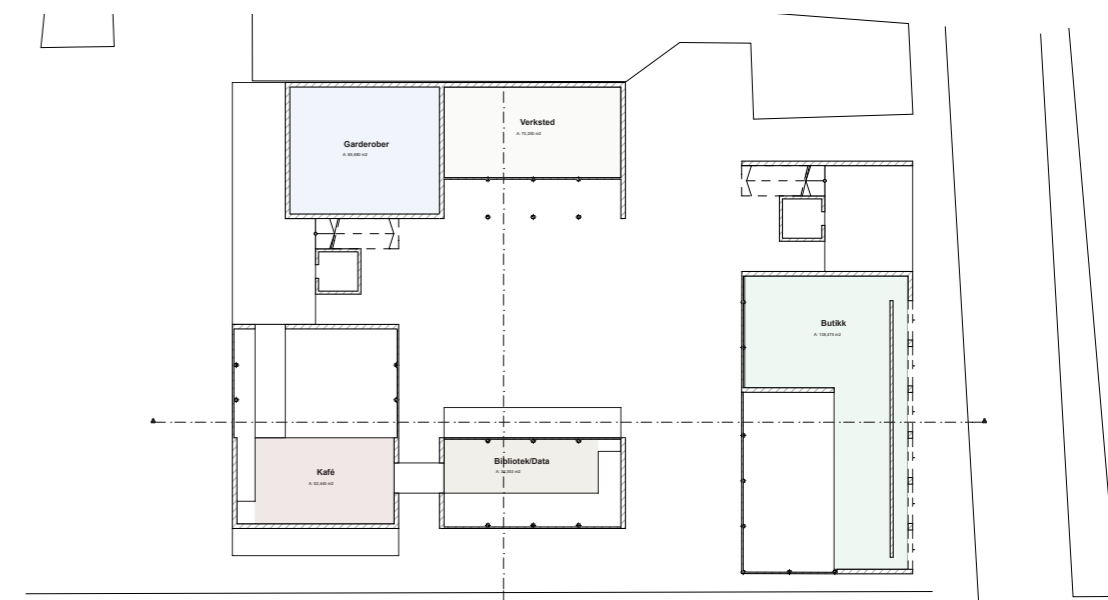
tverrsnitt



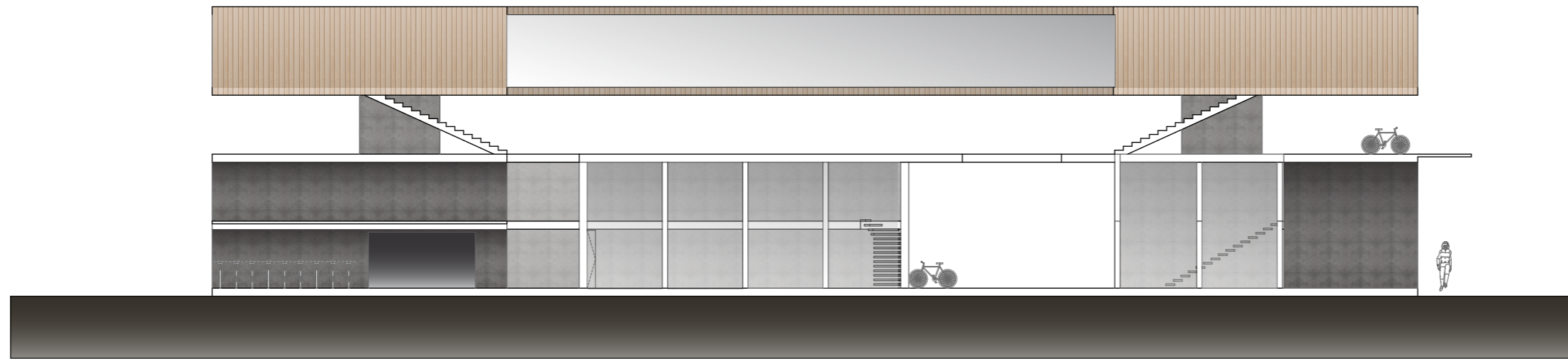
4.etg



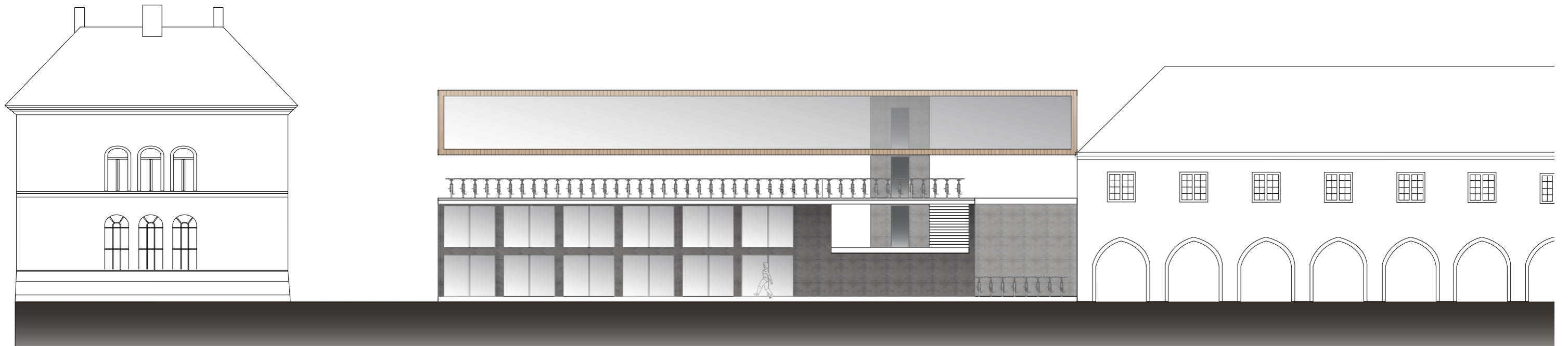
3.etg



2.etg



fasade mot ark. christies gate



fasade mot prinsens gate



KAFFE

INFO

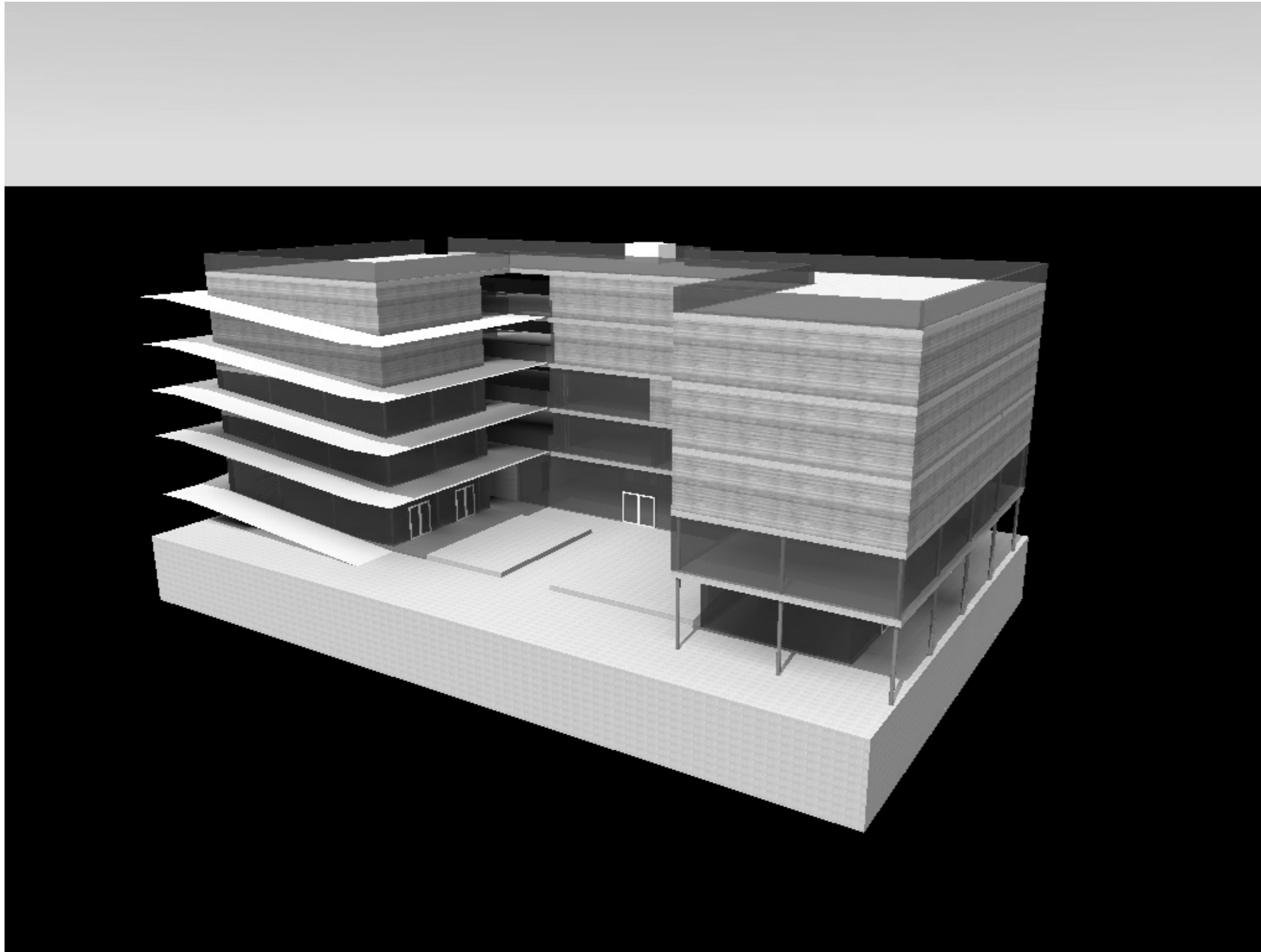
BUTIKK

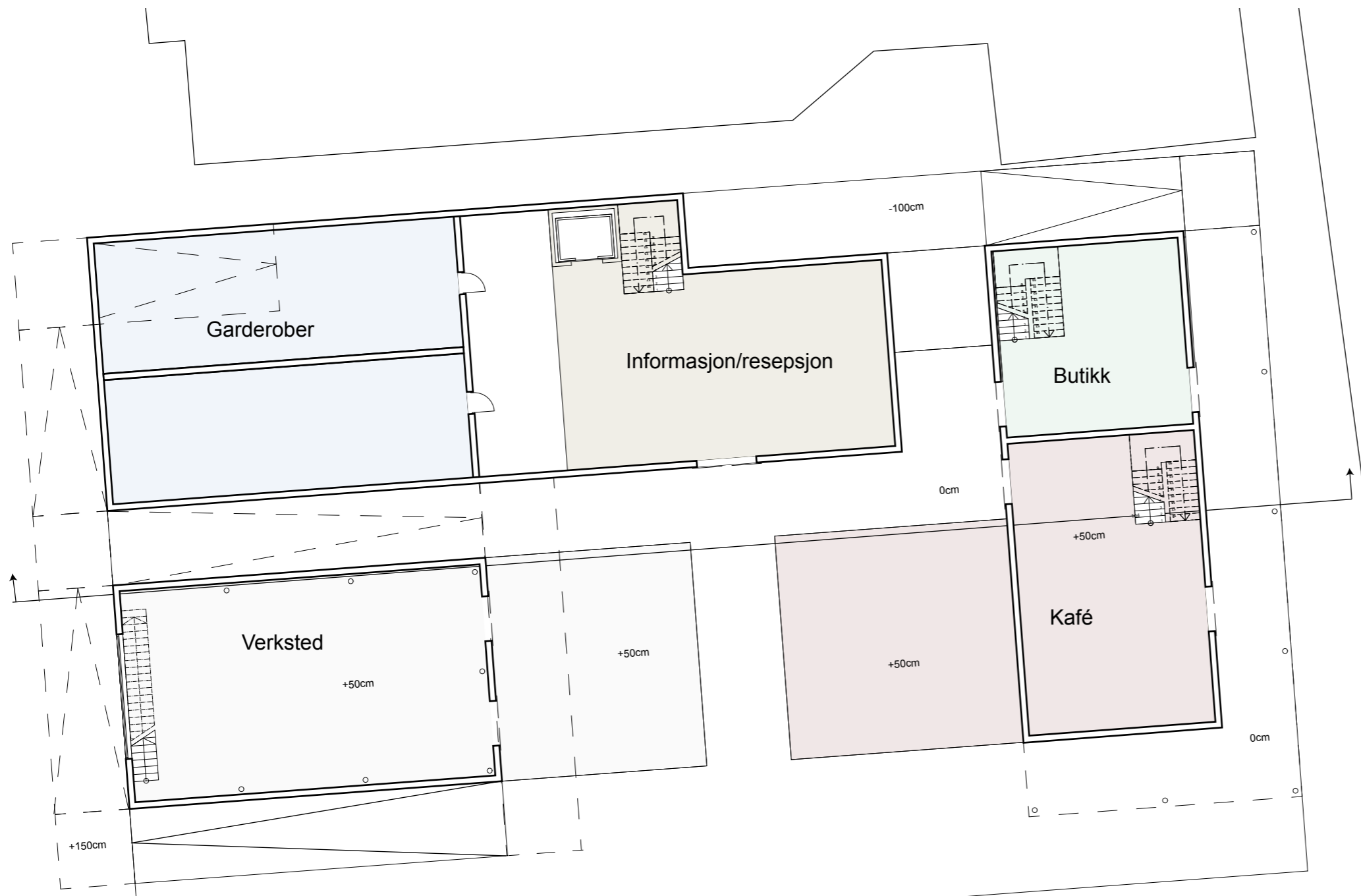


VERKSTED

BUTIKK

Ramper til taket

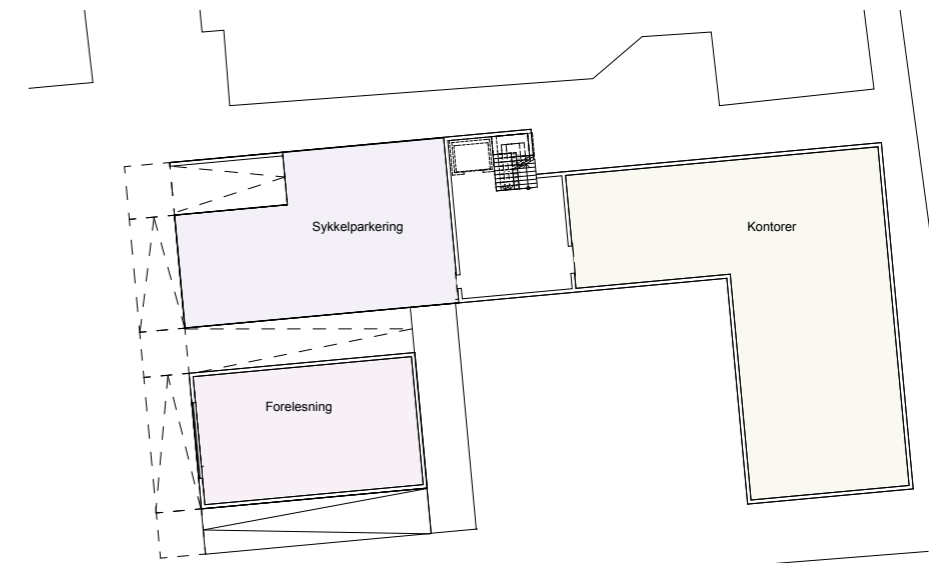




1. etg
PLAN 1:200

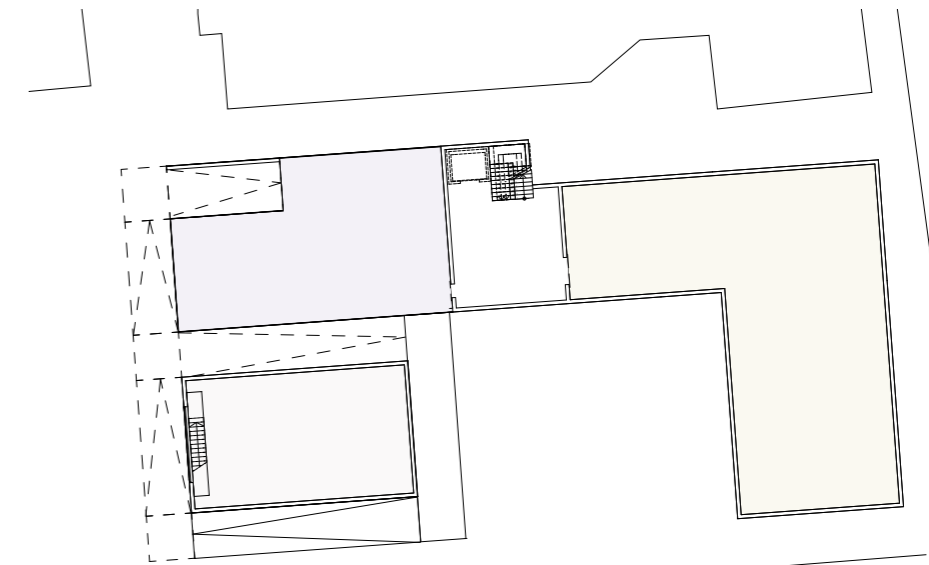


langsnitt



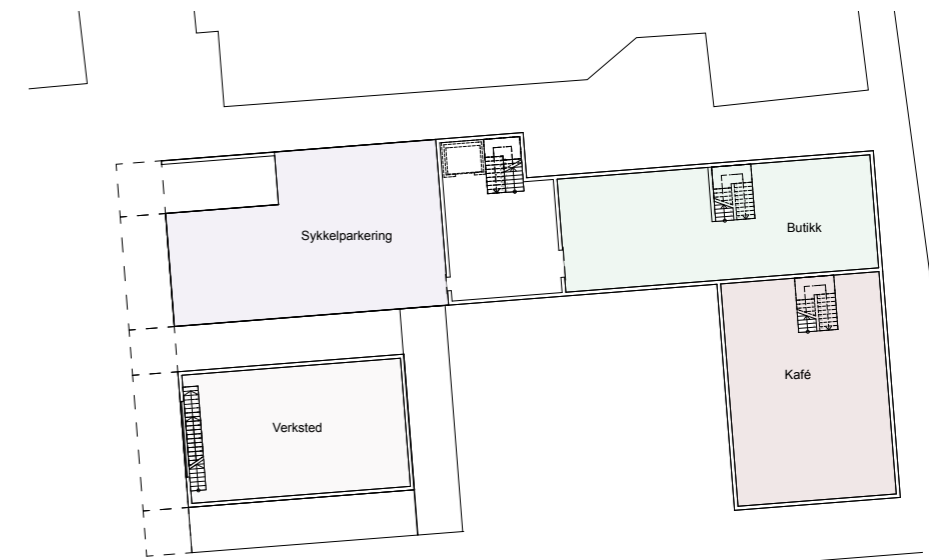
4.etg

4. og 5. etg
PLAN 1:200



3.etg

3. etg
PLAN 1:200

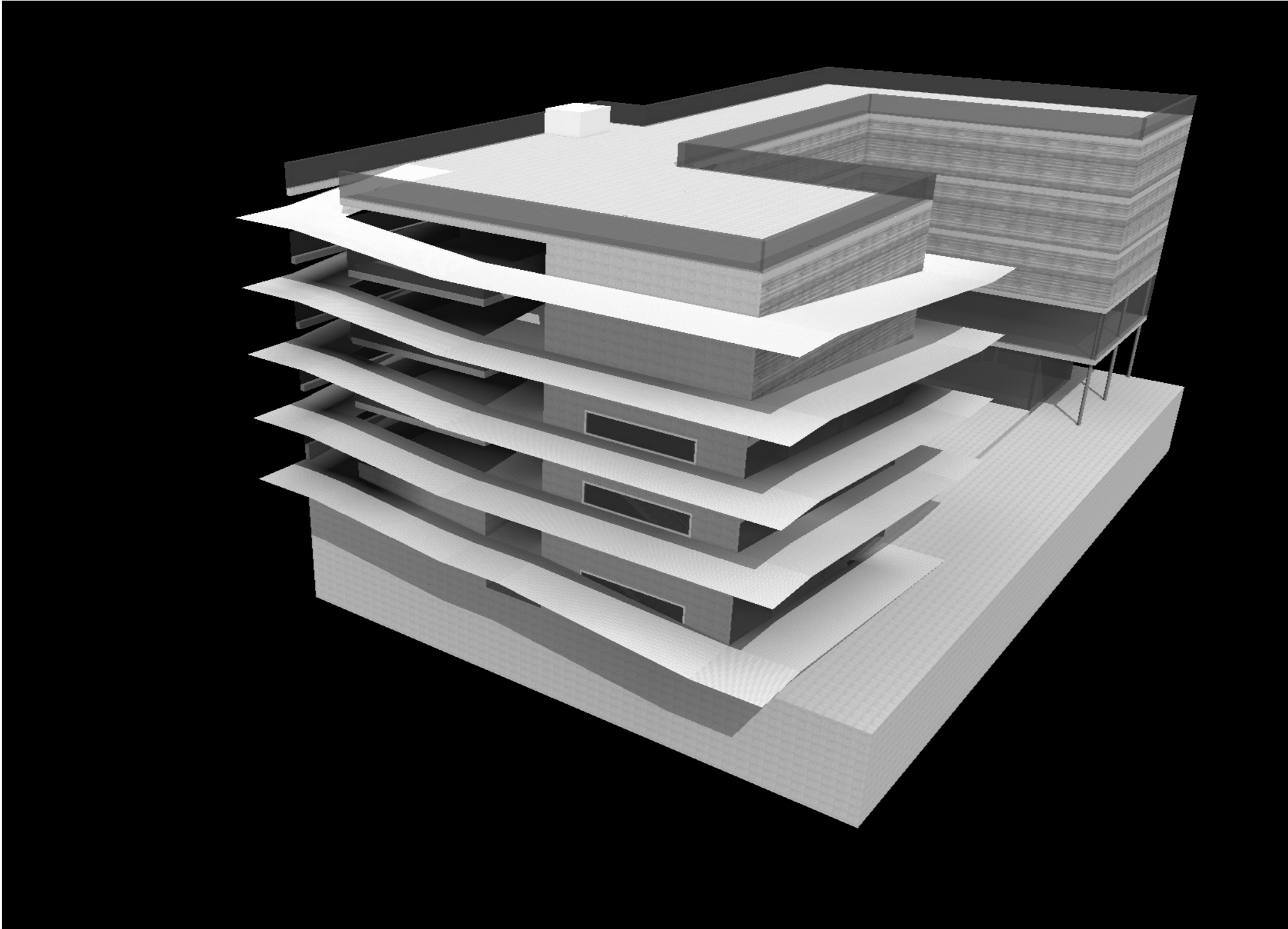


2.etg

2. etg
PLAN 1:200



fasade mot prinsens gate

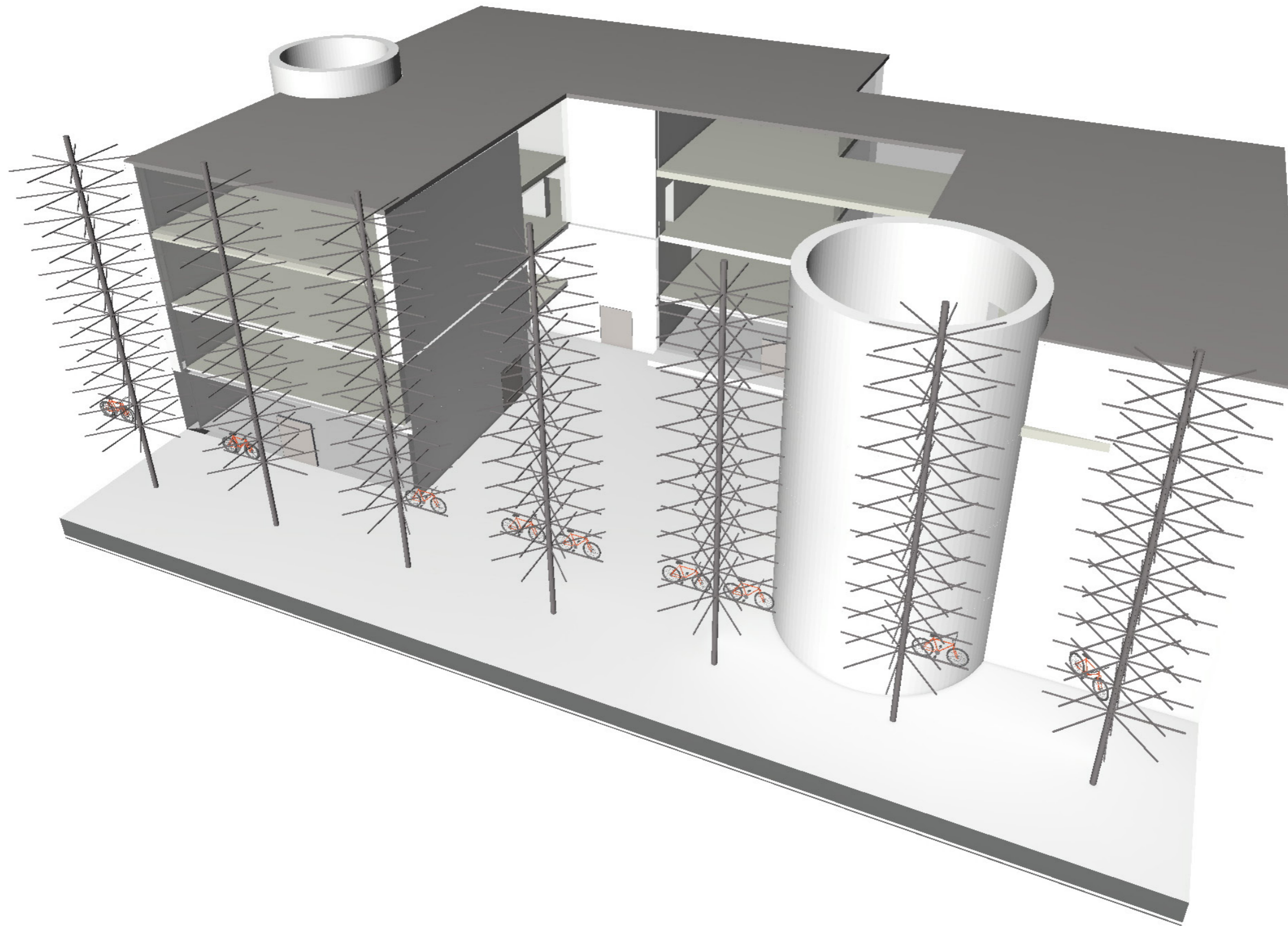




VERKSTED

KAFÉ

Sykkeltrær



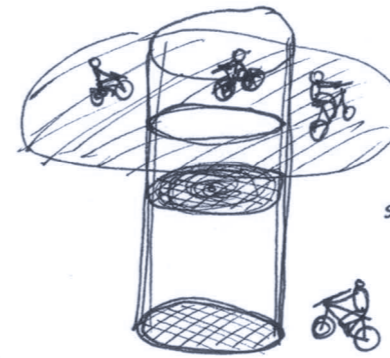
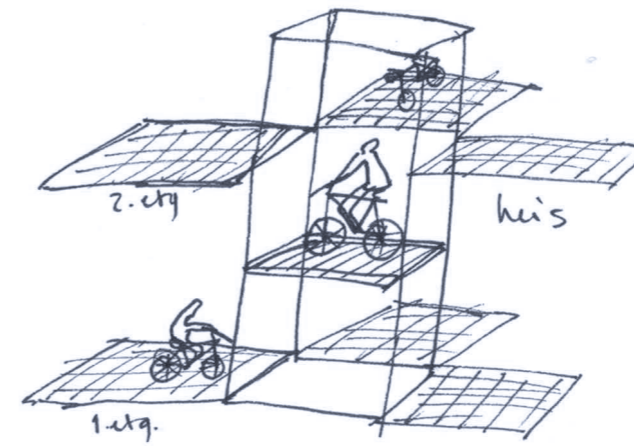
vertikal parkering



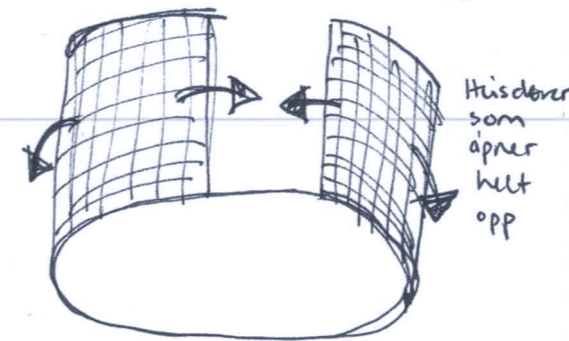
i trærne
hengende

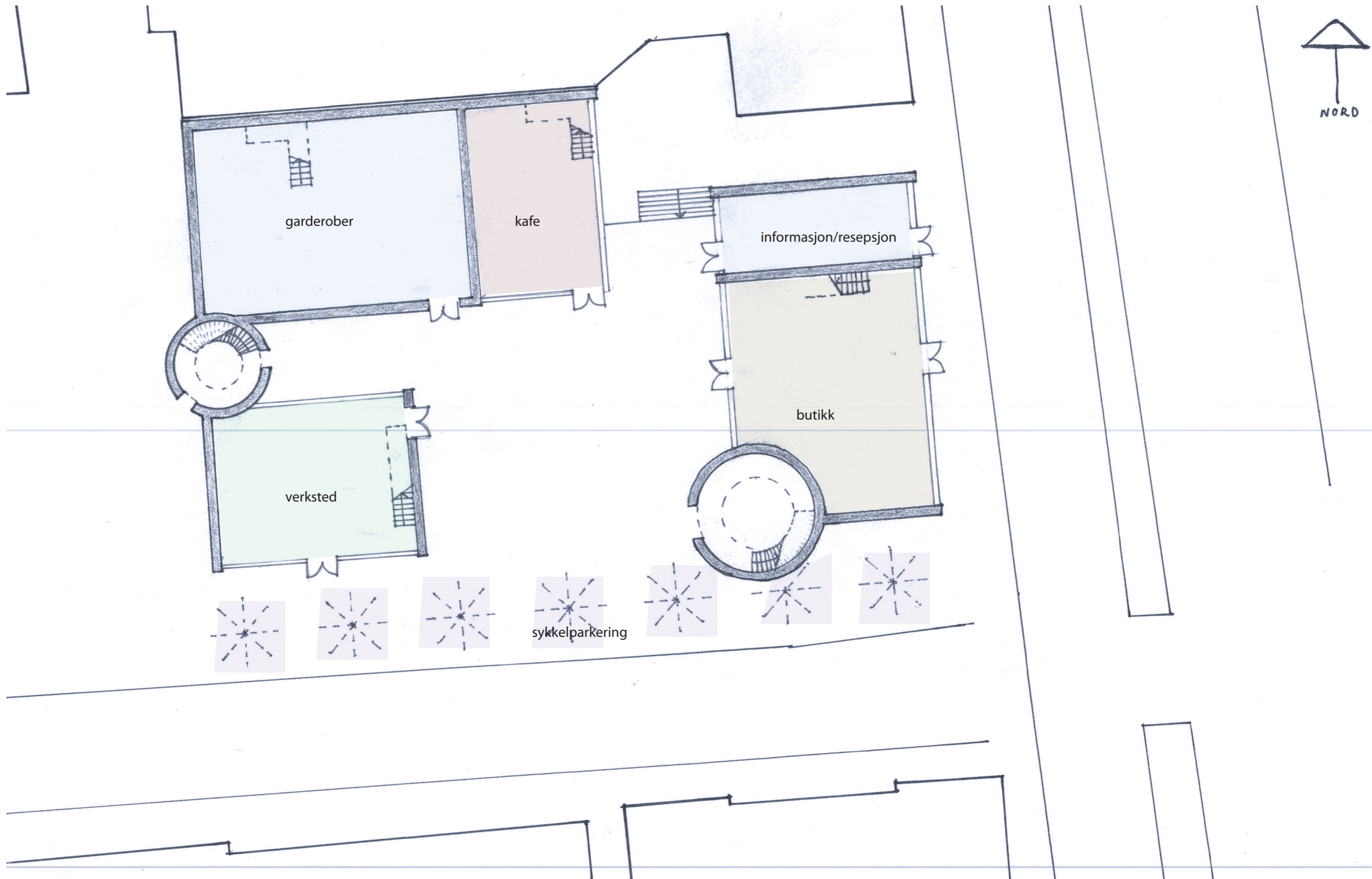


lampe skjerm

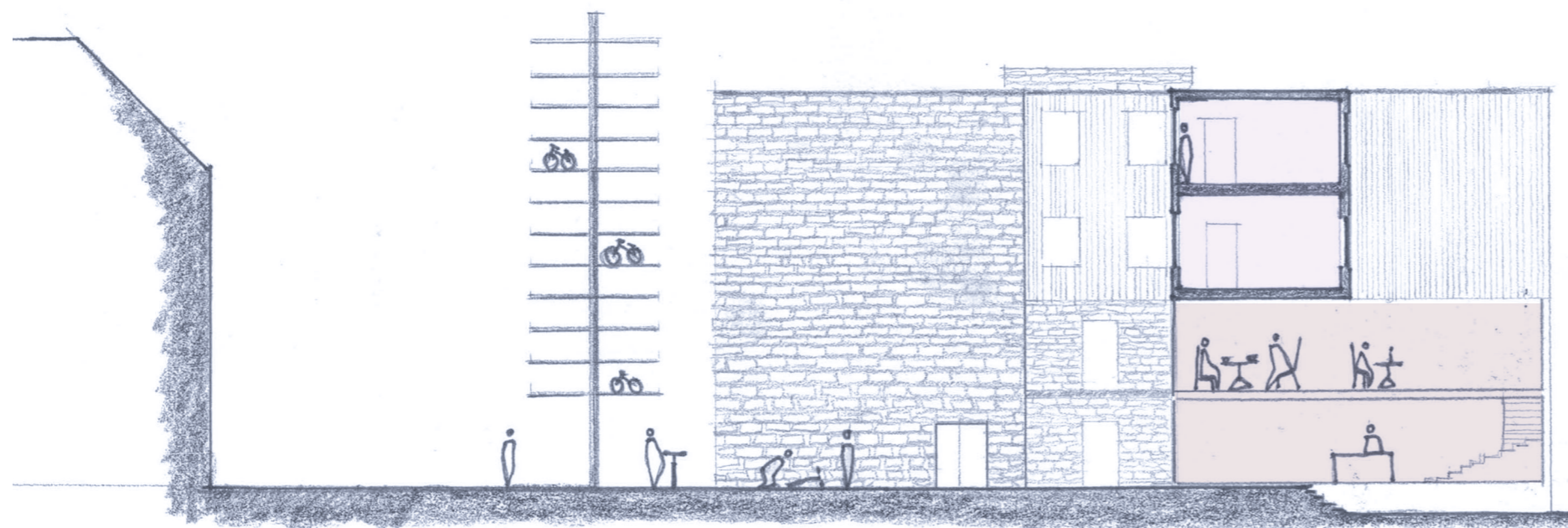


sykle inn
og ut
hvor som
helst i
his'en

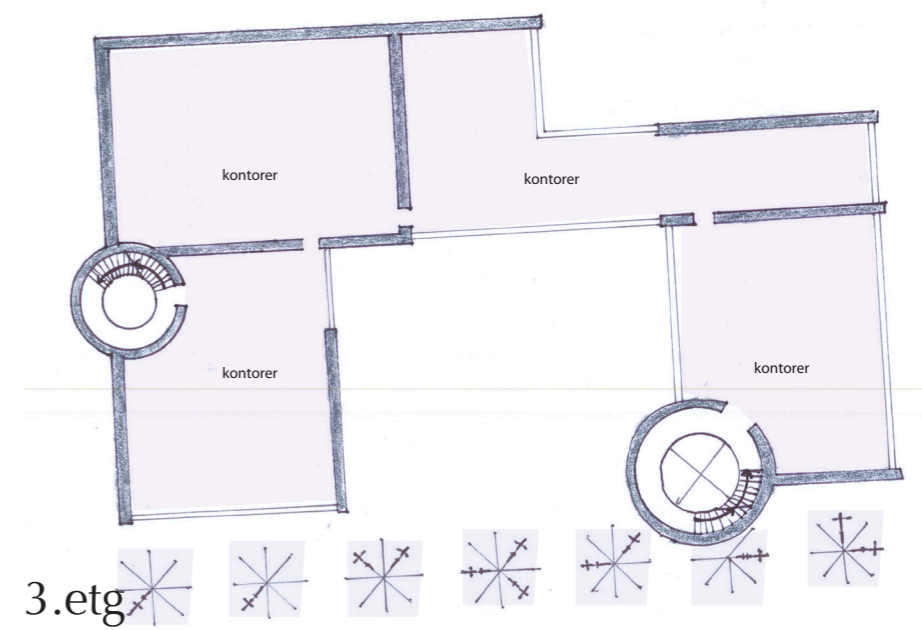
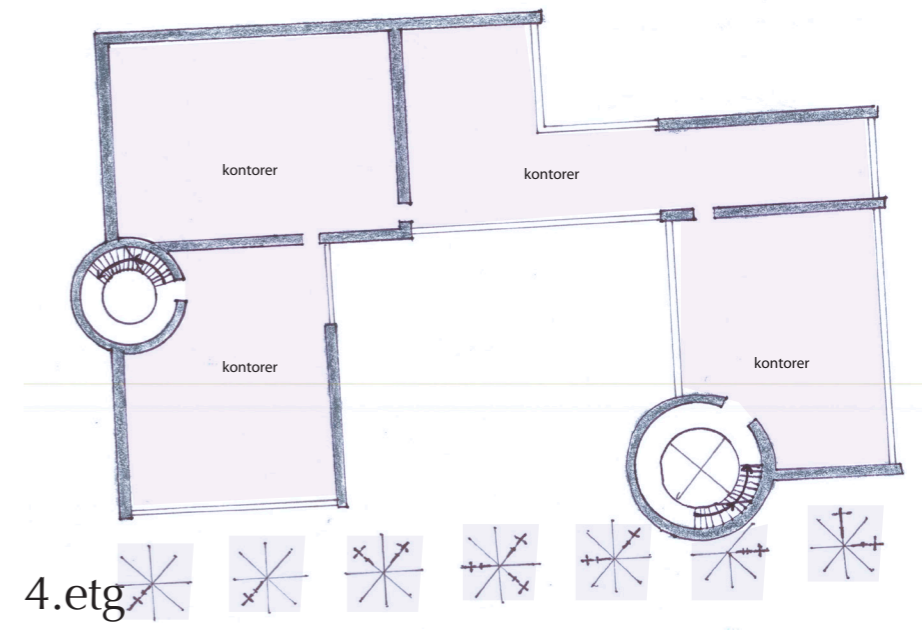


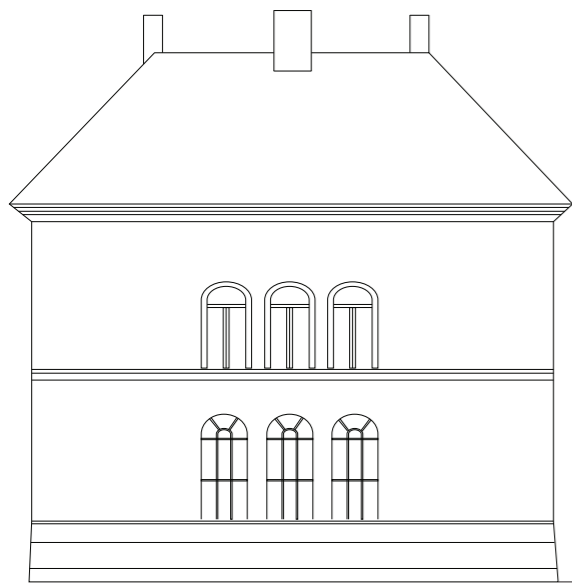


1.etg



tverrsnitt





fasade mot prinsens gate



VERKSTED

SYKKELPARKERING

KAFÉ

arkitekt christies gate

på vei til prinsens gate



sykkelbutikk

sykkelparkering

fikse og verksted

kafé

utgang fra prinsen kino

