



Protan Terraces and Balconies

Technical Drawings



Protecting values

Protan Terraces and Balconies



Drawing No.:	Name:	Page:
80-10-01	Pedestrian Deck with concrete tiles – uninsulated	5
80-10-02	Pedestrian Deck with wooden lattice – uninsulated	5
80-10-03	Pedestrian Deck with ceramic tiles – uninsulated	6
80-10-04	Pedestrian Deck – insulated.....	6
80-10-05	Pedestrian Deck – insulated duo construction.....	7
80-10-06	Pedestrian Deck – parapet detail	7
80-10-07	Pedestrian Deck – edge trim	8
80-10-08	Pedestrian Deck – termination with wall flashing detail	8
80-15-01	Exposed Terrace membrane	9
80-15-02	Exposed Terrace membrane – joint detail	9

Separation layers for Protan PVC membranes

A separation layer/barrier between the roofing membrane and its underlying deck, is sometimes necessary to protect the roofing material from chemical and/or mechanical influences.

The separation layer must be functional under all conditions that the roofing membrane might experience during its entire lifetime.

- Migration barriers are installed between two layers to avoid chemical interaction between them.
- Sliding layers are installed between two layers to prevent friction between them.
- Levelling layers are installed between two layers mainly for aesthetic reasons.
- Protection layers are installed on top of the membrane mainly to protect it from mechanical stress etc.
(Protan recommends a layer of PVC 1,2-2,0mm, alternatively a very thick polypropylene fleece > 300g/m².)

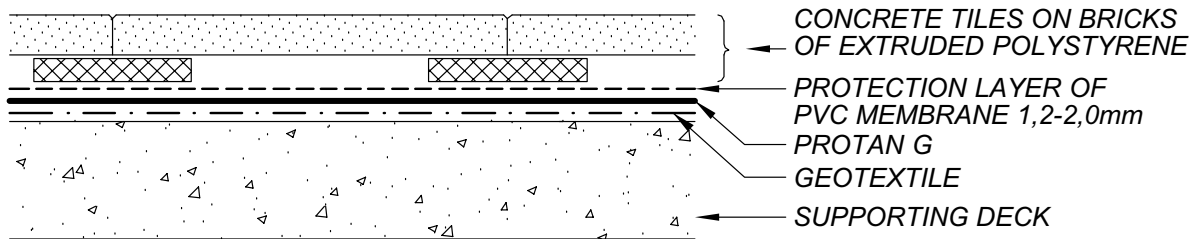
Table: Separation layers for Protan PVC

Underlying deck	Protan PVC-membrane	
Old bitumen roofs	<p>Protan EX Protan EX has a 140 g/m² polypropylene fleece migration barrier laminated on the reverse side</p>	<p>Protan SE Protan SE requires a separate migration barrier installed on top of the bitumen surface to avoid migration. Protan recommends: Fibertex F2B, 140g/m² polypropylene, supplied by Protan AS</p>
EPS/XPS-insulation	<p>Protan EXG Protan EXG has a 60g/m² glass fleece migration barrier laminated on the reverse side</p>	<p>Protan SE Protan SE requires a separate migration barrier installed on top of the bitumen surface to avoid migration. Protan recommends: Glass fleece 50g/m² supplied by Protan AS</p>
Bases of smooth concrete or light weight concrete	<p>Protan SE Protan SE requires a sliding/levelling layer installed on top of the concrete deck. Protan recommends: Fibertex F4M 300 g/m² PP, supplied by Protan AS. Note! Polyester felt must not be used on concrete!</p>	
Timber decks	As for old bitumen roofs	
Rubber, such as underlying blocks, mats, packing etc.	As for old bitumen roofs	
Old mechanically fastened polymeric membrane	As for old bitumen roofs (140g/m ² polypropylene fleece/geo-textile). Existing membrane to be slit at perimeters, change of angle, fixing lines etc to alleviate any stress/tension transfer to new fasteners and to assist in the drying out of any trapped moisture	
Old gravel ballasted polymeric membrane	Where possible the existing membrane should be removed, if this is not feasible, the existing membrane should be slit at perimeters, change of angle, fixing points etc to alleviate any stress/tension transfer to new fasteners and to assist in the drying out of any trapped moisture	
Lubricated roofs	Lubricated roofs should be evaluated, please contact Protan Technical Services	

Please contact Protan for a list of other tested and approved products for the use as separation layers.

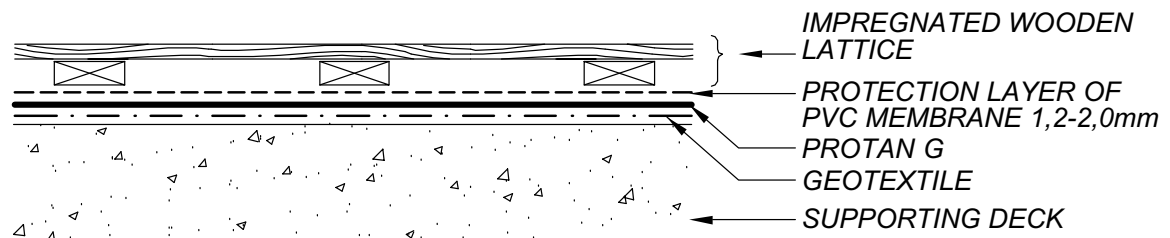
Pedestrian Deck with concrete tiles – uninsulated

Drawing No.: 80-10-01
Version No.: 02-2008
Not to scale



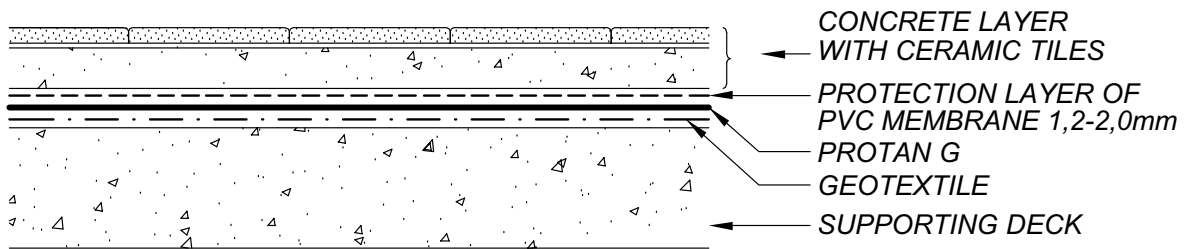
Pedestrian Deck with wooden lattice– uninsulated

Drawing No.: 80-10-02
Version No.: 02-2008
Not to scale



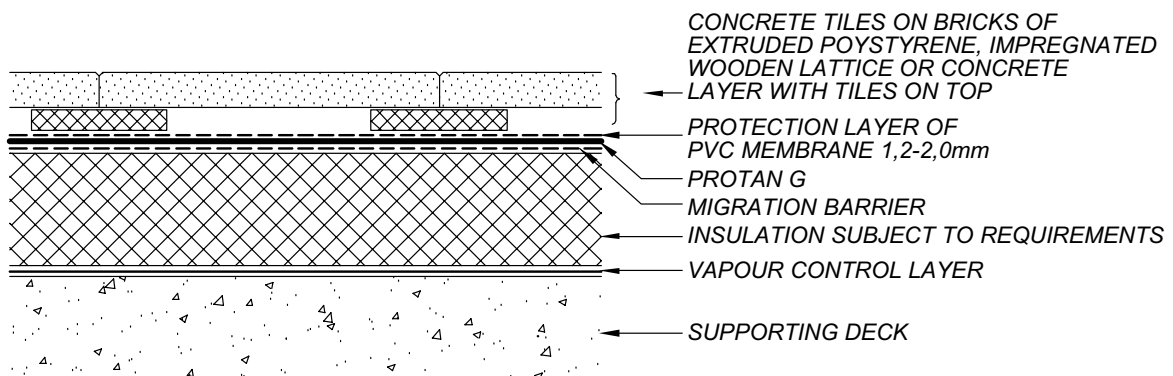
Pedestrian Deck with ceramic tiles – uninsulated

Drawing No.: 80-10-03
Version No.: 02-2008
Not to scale



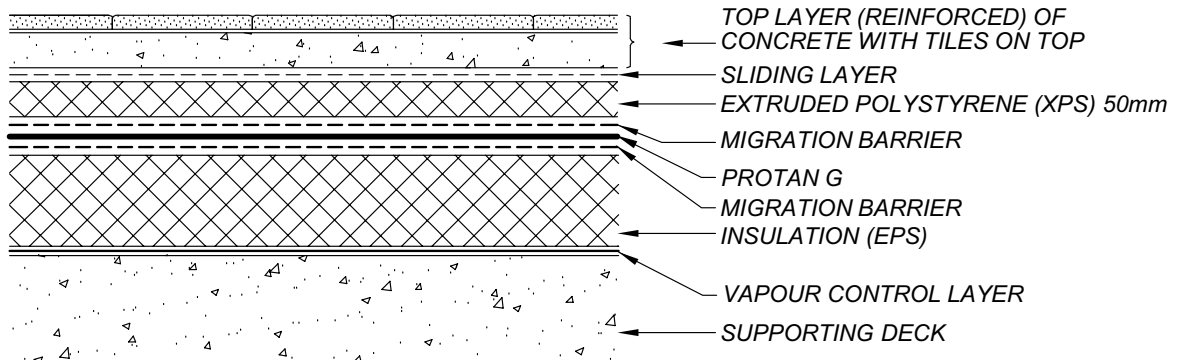
Pedestrian Deck – insulated

Drawing No.: 80-10-04
Version No.: 02-2008
Not to scale



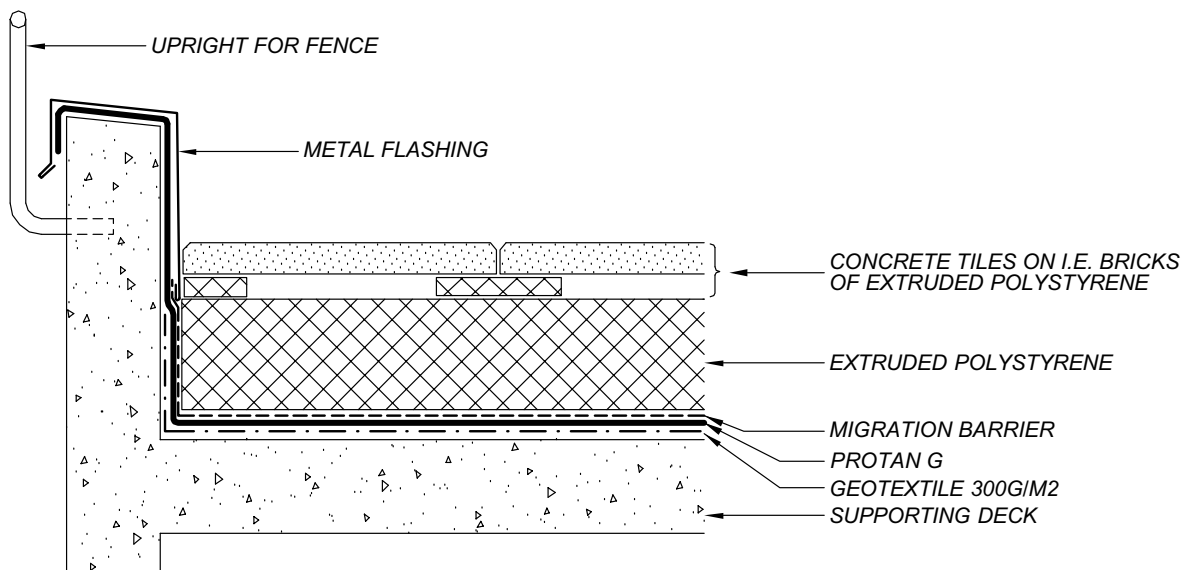
Pedestrian Deck – insulated duo construction

Drawing No.: 80-10-05
Version No.: 01-2004
Not to scale



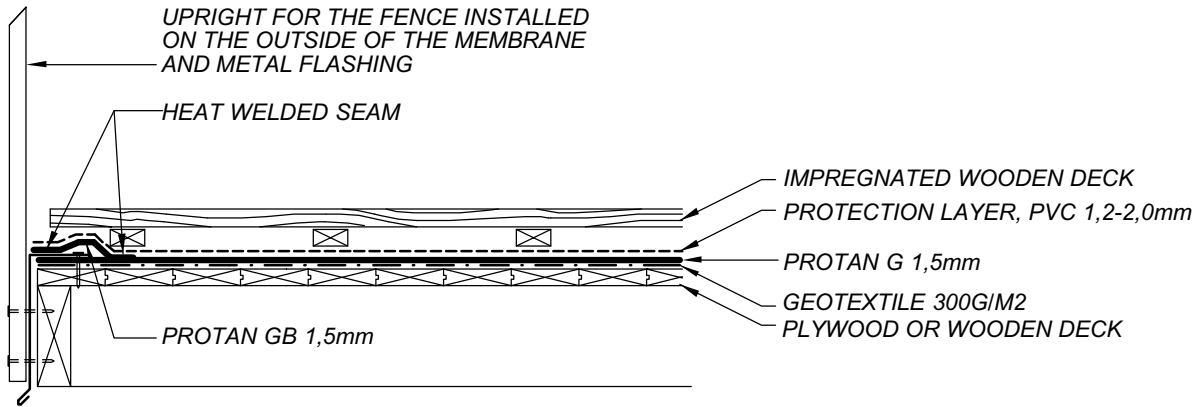
Pedestrian Deck – parapet detail

Drawing No.: 80-10-06
Version No.: 02-2008
Not to scale



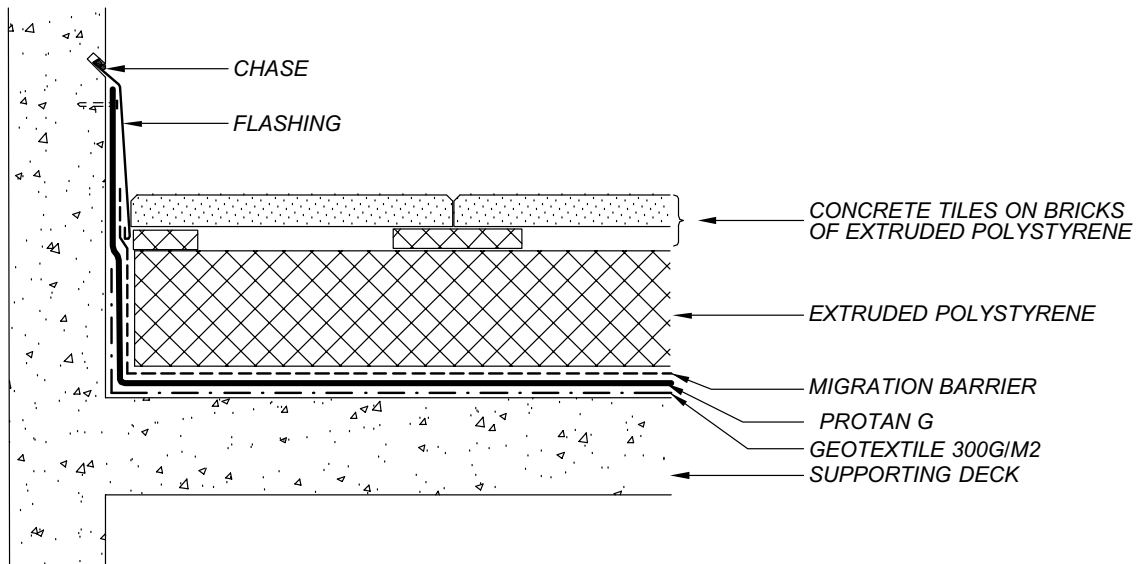
Pedestrian Deck – edge trim

Drawing No.: 80-10-07
 Version No.: 02-2008
 Not to scale



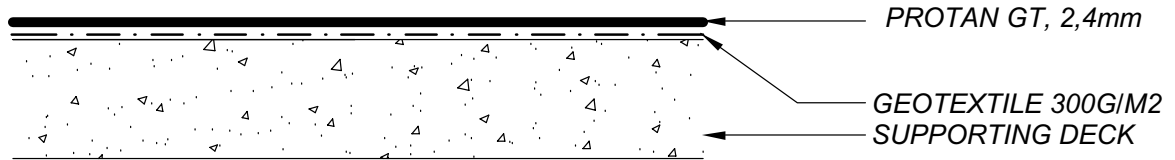
Pedestrian Deck– termination with wall flashing detail

Drawing No.: 80-10-08
 Version No.: 02-2008
 Not to scale



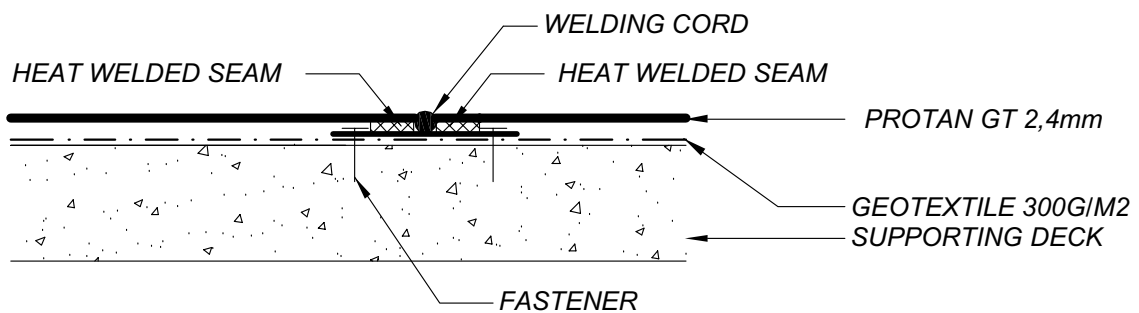
Exposed Terrace membrane

Drawing No.: 80-15-01
Version No.: 01-2004
Not to scale



Exposed Terrace membrane - joint detail

Drawing No.: 80-15-02
Version No.: 01-2004
Not to scale



Other technical drawings

Protan Exposed Membrane Roof



Protan Protected Membrane Roof



Protan Roof Renovation



Protan Terraces and Balconies

Protan Technical Drawings



Protan AS
P. O. Box 420 Brakerøya - N-3002 Drammen - Norway
Telephone +47 32 22 16 00 - Fax +47 32 22 17 00
www.protan.com

The information in this document is believed to be correct at the date of publication. Protan AS does not accept any liability for errors or omissions, or for any consequences resulting therefrom.