



# Protan Terraces and Balconies

System Specification



Protecting values

# Protan Terraces and Balconies

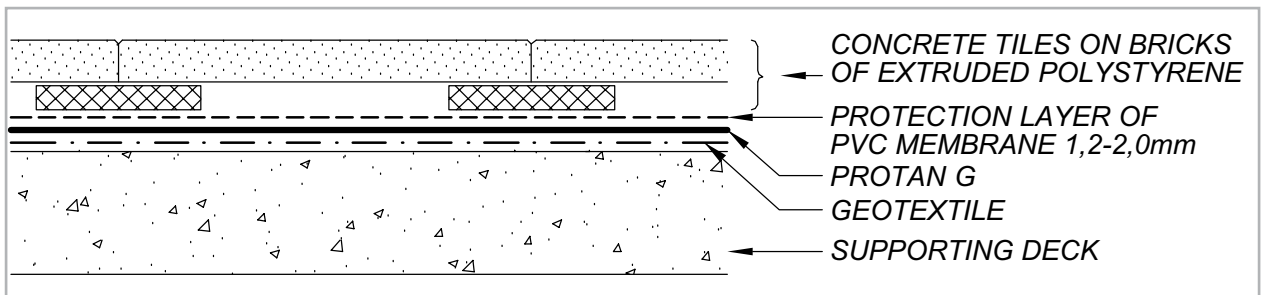
Protan has developed two solutions for single ply covering of terraces and balconies:

- Protan protected terrace membrane for applications covered with tiles, concrete paving slabs, slatted wooden slabs, timber decking or equal.
- Protan exposed terrace membrane developed with high resistance to wear, anti slip surface and nice looking.

## Protan G 1,5mm – Protected Terrace Membrane

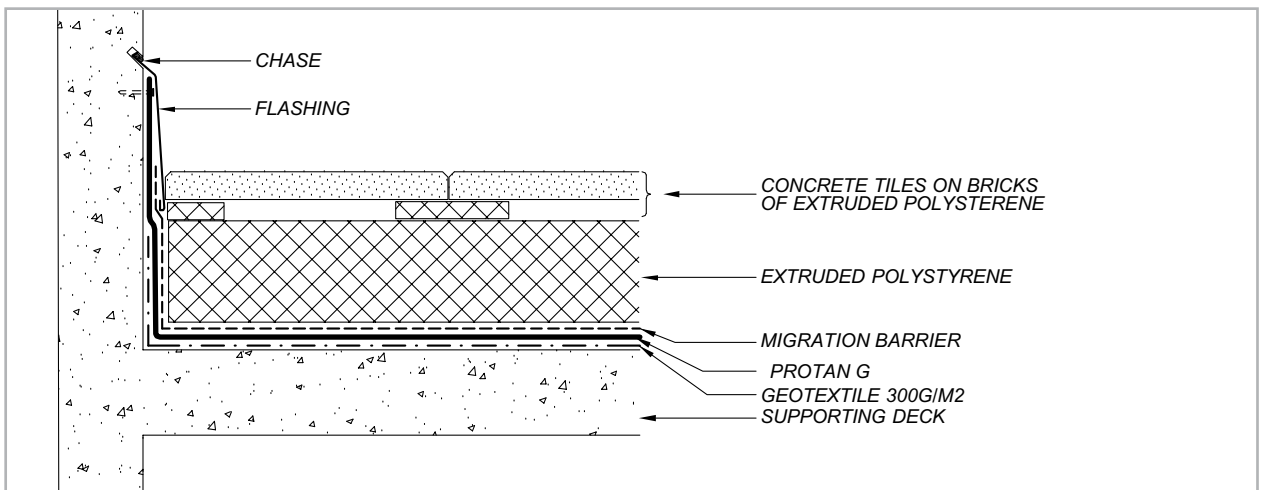
Protan G 1,5 mm is waterproofing membranes for use on protected terraces with pedestrian traffic. Protan G

1,5 mm is well suited for waterproofing under concrete tiles, timber decking or concrete.



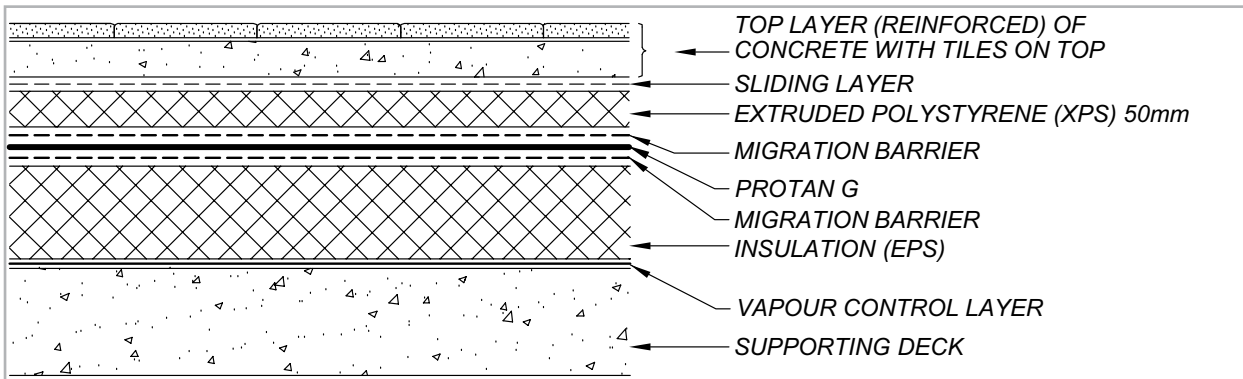
A protective layer over the membrane is needed to prevent mechanical damage or negative chemical influence.

The membrane is UV resistant and needs no additional protection on vertical details directly exposed to sunlight.



Protan G 1,5mm has hot air welded seams and is loosely installed, either on un-insulated or insulated supporting decks. On insulated decks it can be installed

either over or under the insulation, or alternatively as a duo construction where the membrane is placed between two layers of insulation.



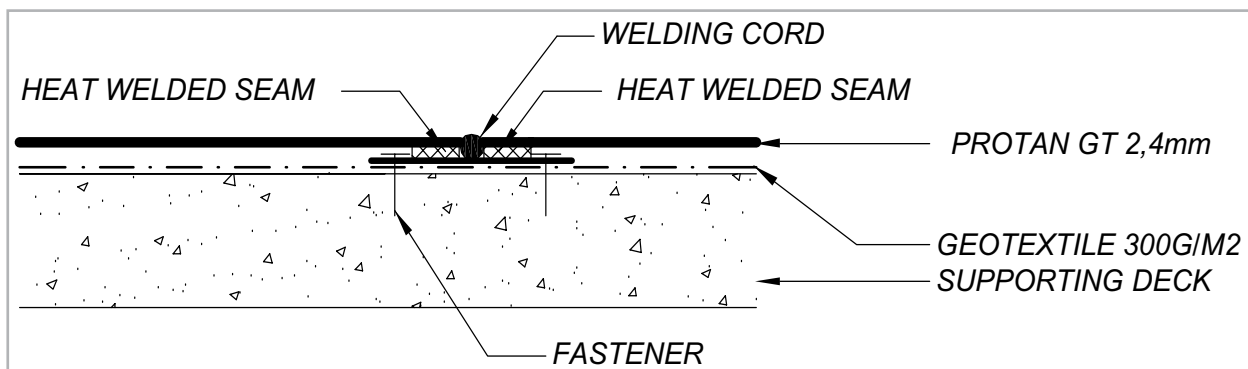
In cases of insulation on the «wet» side of the waterproofing membrane, make sure a non water absorbing insulation is used (eg. extruded polystyrene, XPS).

Protan G 1,5mm can normally not be mechanically fastened to withstand wind loads.

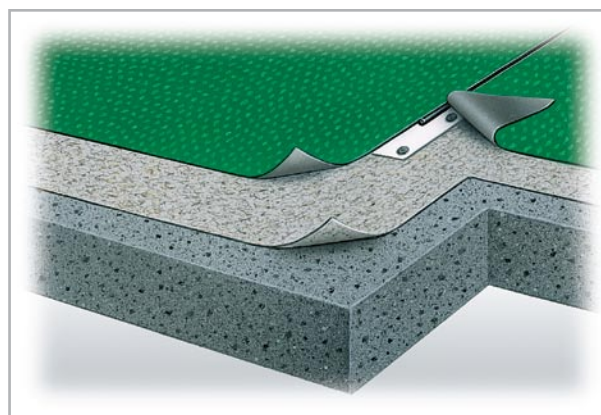
## Protan GT – Exposed Terrace Membrane

Protan GT terrace membrane is essentially a PVC flooring to which plasticisers and UV stabilizers are added to make it suitable for use outdoors. The membrane is glass fibre reinforced and is highly resistant to wear. The

flush joints are welded watertight with hot air. Details are all produced in the same colour to provide total uniformity.



The finished result depends largely on the substrate. Protan GT is dimensionally stable - thus the best result is achieved by installing on dimensionally stable substrate for example smooth concrete deck. A thick polypropylene (PP) fleece is installed to conceal the fixing points due to mechanical installation of Protan GT. The thick PP-fleece also eliminates some unevenness in the substrate and gives a better aesthetic result. (Folds or excess material in the membrane may occur when laying on a non-dimensionally stable substrate like chipboard sheets or aluminium deck.)



Protan GT 2,4mm is installed on the horizontal surfaces. Details and terminations are executed with Protan GT 1,4mm.

The Protan GT 2,4mm terrace membrane is welded to a secret mechanical fixed strip and butt-jointed, leaving a gap between adjacent sheets for sealing with a PVC welding cord.

At temperatures under +10 °C, special attention must be paid to the installation.

The terrace membrane is, wherever possible, taken up behind the wall cladding and secured, or alternatively terminated to the wall and covered with a counter-flashing. At external gutters it is normal to install a PVC-coated steel flashing with a drip fold, to which the terrace membrane is welded directly.

## Protan Terraces and Balconies

System Specification



Protan AS

P. O. Box 420 Brakerøya - N-3002 Drammen - Norway

Telephone +47 32 22 16 00 - Fax +47 32 22 17 00

[www.protan.com](http://www.protan.com)

The information in this System Specification is believed to be accurate. Protan AS does not accept responsibility or liability for any errors or omissions, or for any consequences resulting therefrom.