



Protan Protected Membrane Roof

Technical Drawings



Protecting values

Protan Protected Membrane Roof



Drawing No.:

Name:

Page:

60-10-01	Gravel Ballasted Roof	5
60-10-02	Gravel Ballasted Roof – duo roof	5
60-15-01	Pedestrian Deck – uninsulated with concrete tiles	6
60-15-02	Pedestrian Deck – uninsulated with wooden lattice	6
60-15-03	Pedestrian Deck – uninsulated with ceramic tiles	7
60-15-04	Pedestrian Deck – insulated.....	7
60-15-05	Pedestrian Deck – insulated duo construction.....	8
60-15-06	Pedestrian Deck – parapet detail	8
60-15-07	Pedestrian Deck – termination detail	9
60-15-08	Pedestrian Deck – termination against wall detail	9
60-20-01	Green Roof – turfed roof	10
60-20-02	Green Roof – turfed roof edge trim detail	10
60-20-03	Green Roof – uninsulated	11
60-20-04	Green Roof – insulated	11
60-20-05	Green Roof – insulated duo construction	12
60-20-06	Green Roof – termination against wall detail.....	12
60-25-01	Sedum Roof – uninsulated, horizontal	13
60-25-02	Sedum Roof – uninsualted, sloped.....	13
60-25-03	Sedum Roof – insulated, horizontal	14

Separation layers for Protan PVC membranes

A separation layer/barrier between the roofing membrane and its underlying deck, is sometimes necessary to protect the roofing material from chemical and/or mechanical influences.

The separation layer must be functional under all conditions that the roofing membrane might experience during its entire lifetime.

- Migration barriers are installed between two layers to avoid chemical interaction between them.
- Sliding layers are installed between two layers to prevent friction between them.
- Levelling layers are installed between two layers mainly for aesthetic reasons.
- Protection layers are installed on top of the membrane mainly to protect it from mechanical stress etc.
(Protan recommends a layer of PVC 1,2-2,0mm, alternatively a very thick polypropylene fleece > 300g/m².)

Table: Separation layers for Protan PVC

Underlying deck	Protan PVC-membrane	
Old bitumen roofs	<p>Protan EX Protan EX has a 140 g/m² polypropylene fleece migration barrier laminated on the reverse side</p>	<p>Protan SE Protan SE requires a separate migration barrier installed on top of the bitumen surface to avoid migration. Protan recommends: Fibertex F2B, 140g/m² polypropylene, supplied by Protan AS</p>
EPS/XPS-insulation	<p>Protan EXG Protan EXG has a 60g/m² glass fleece migration barrier laminated on the reverse side</p>	<p>Protan SE Protan SE requires a separate migration barrier installed on top of the bitumen surface to avoid migration. Protan recommends: Glass fleece 50g/m² supplied by Protan AS</p>
Bases of smooth concrete or light weight concrete	<p>Protan SE Protan SE requires a sliding/levelling layer installed on top of the concrete deck. Protan recommends: Fibertex F4M 300 g/m² PP, supplied by Protan AS. Note! Polyester felt must not be used on concrete!</p>	
Timber decks	As for old bitumen roofs	
Rubber, such as underlying blocks, mats, packing etc.	As for old bitumen roofs	
Old mechanically fastened polymeric membrane	As for old bitumen roofs (140g/m ² polypropylene fleece/geo-textile). Existing membrane to be slit at perimeters, change of angle, fixing lines etc to alleviate any stress/tension transfer to new fasteners and to assist in the drying out of any trapped moisture	
Old gravel ballasted polymeric membrane	Where possible the existing membrane should be removed, if this is not feasible, the existing membrane should be slit at perimeters, change of angle, fixing points etc to alleviate any stress/tension transfer to new fasteners and to assist in the drying out of any trapped moisture	
Lubricated roofs	Lubricated roofs should be evaluated, please contact Protan Technical Services	

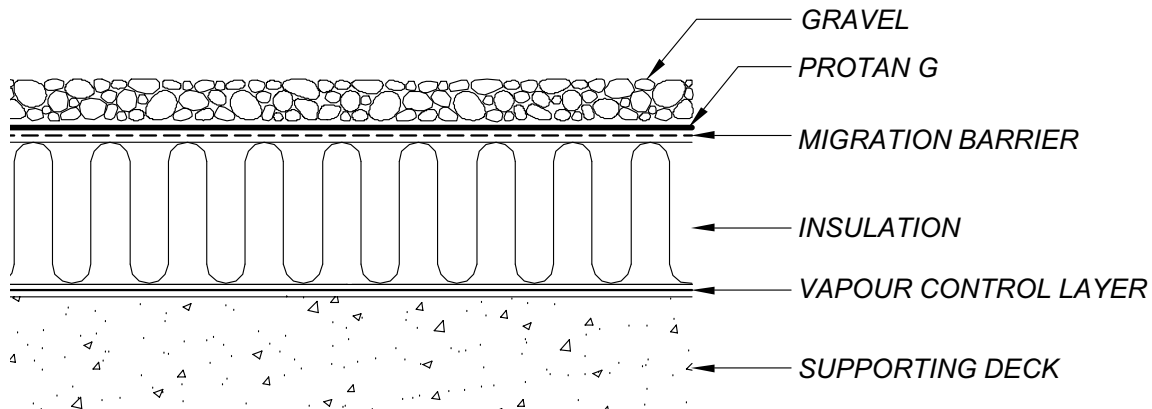
Please contact Protan for a list of other tested and approved products for the use as separation layers.

Gravel Ballasted Roof

Drawing No.: 60-10-01

Version No.: 02-2008

Not to scale

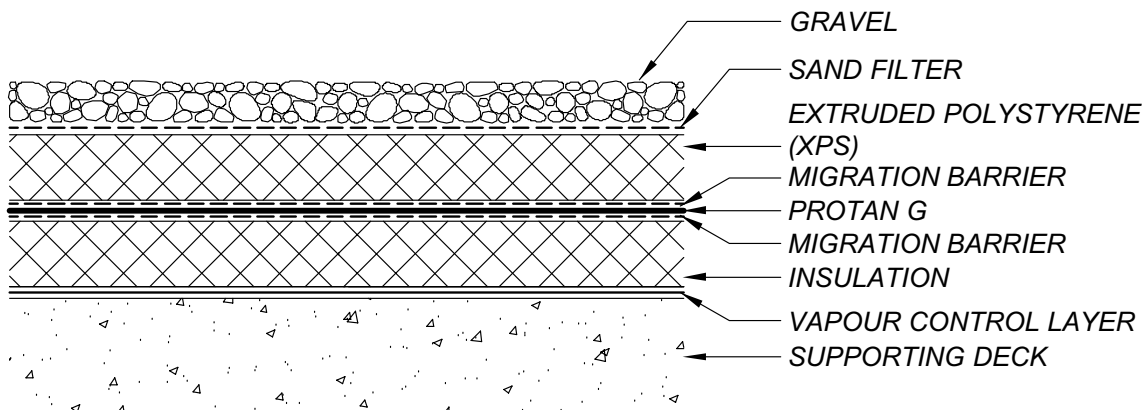


Gravel Ballasted Roof – duo roof

Drawing No.: 60-10-02

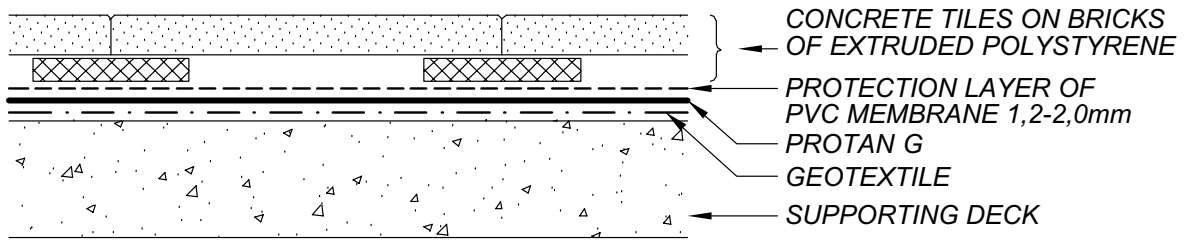
Version No.: 02-2008

Not to scale



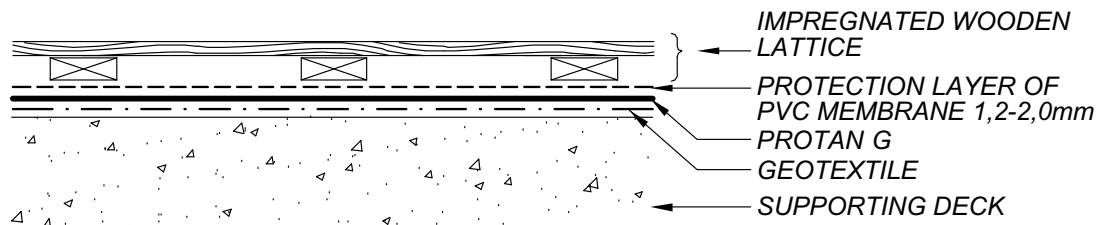
Pedestrian Deck – uninsulated with concrete tiles

Drawing No.: 60-15-01
Version No.: 02-2008
Not to scale



Pedestrian Deck – uninsulated with wooden lattice

Drawing No.: 60-15-02
Version No.: 02-2008
Not to scale

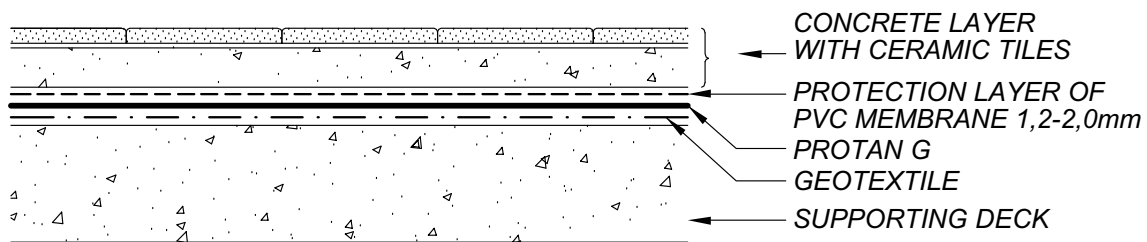


Pedestrian Deck – uninsulated with ceramic tiles

Drawing No.: 60-15-03

Version No.: 02-2008

Not to scale

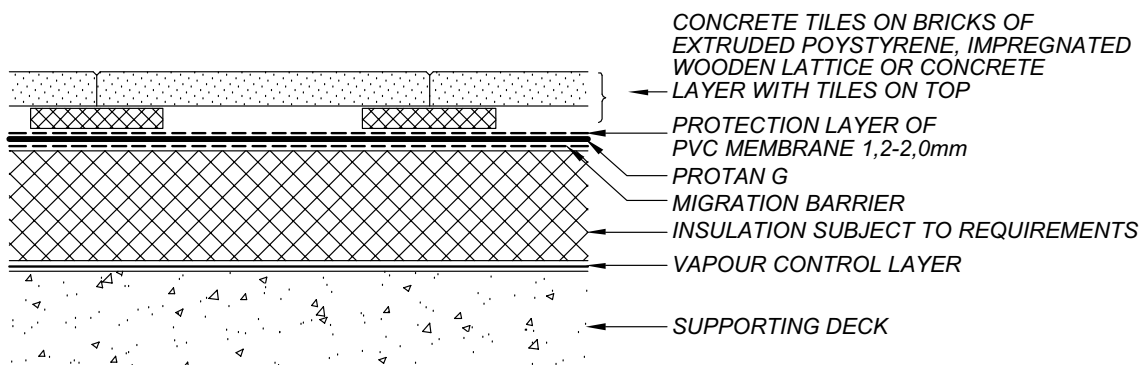


Pedestrian Deck – insulated

Drawing No.: 60-15-03

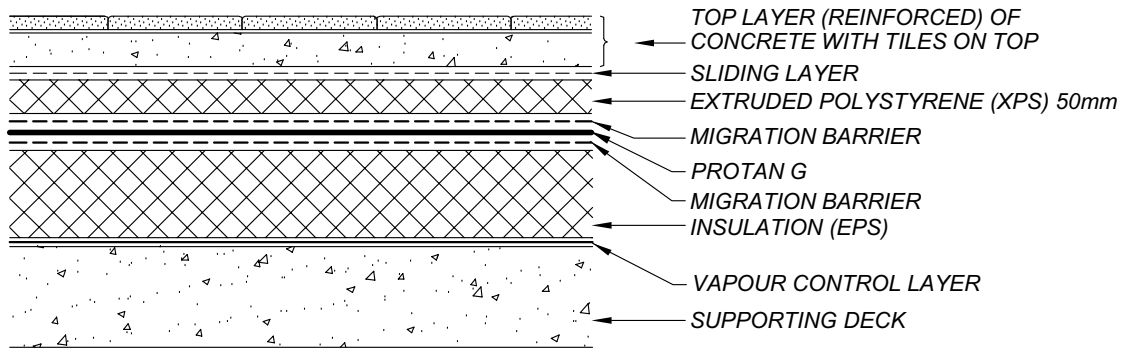
Version No.: 02-2008

Not to scale



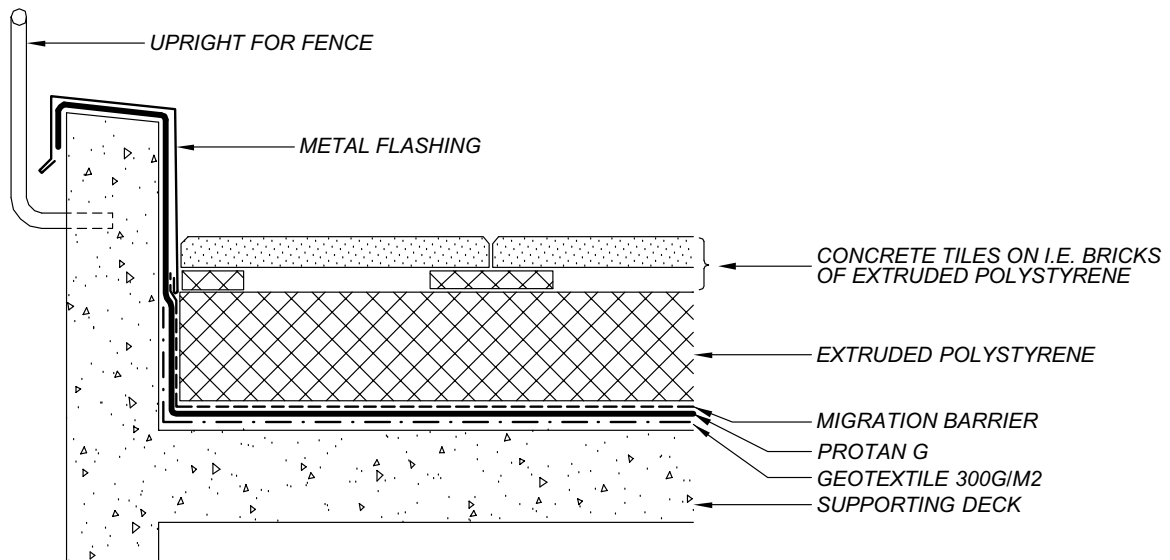
Pedestrian Deck – insulated duo construction

Drawing No.: 60-15-05
Version No.: 01-2004
Not to scale



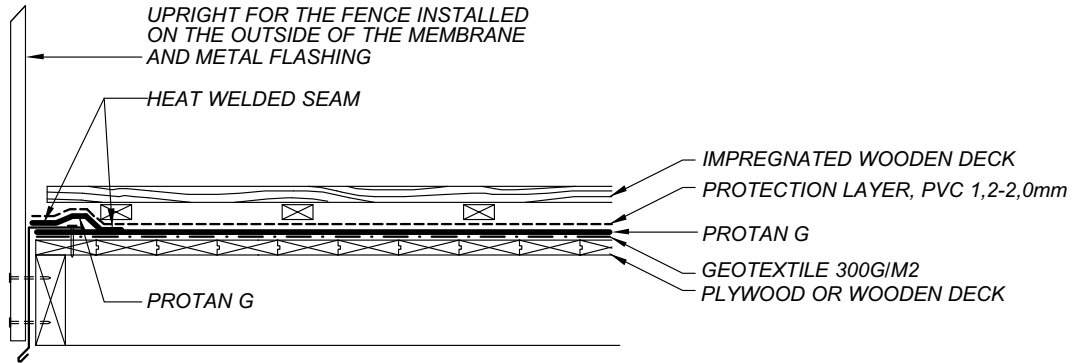
Pedestrian Deck – parapet detail

Drawing No.: 60-15-06
Version No.: 02-2008
Not to scale



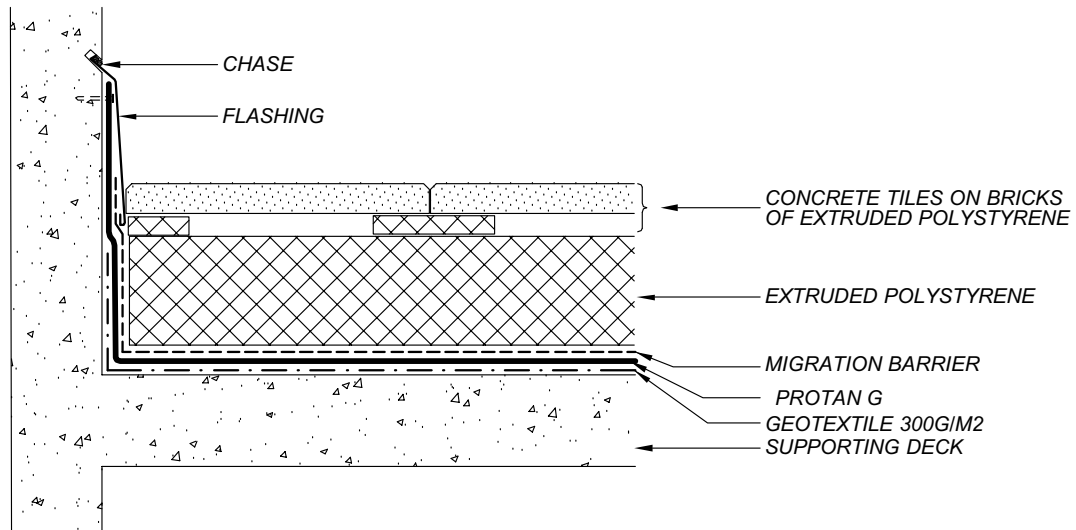
Pedestrian Deck – termination detail

Drawing No.: 60-15-07
 Version No.: 02-2008
 Not to scale



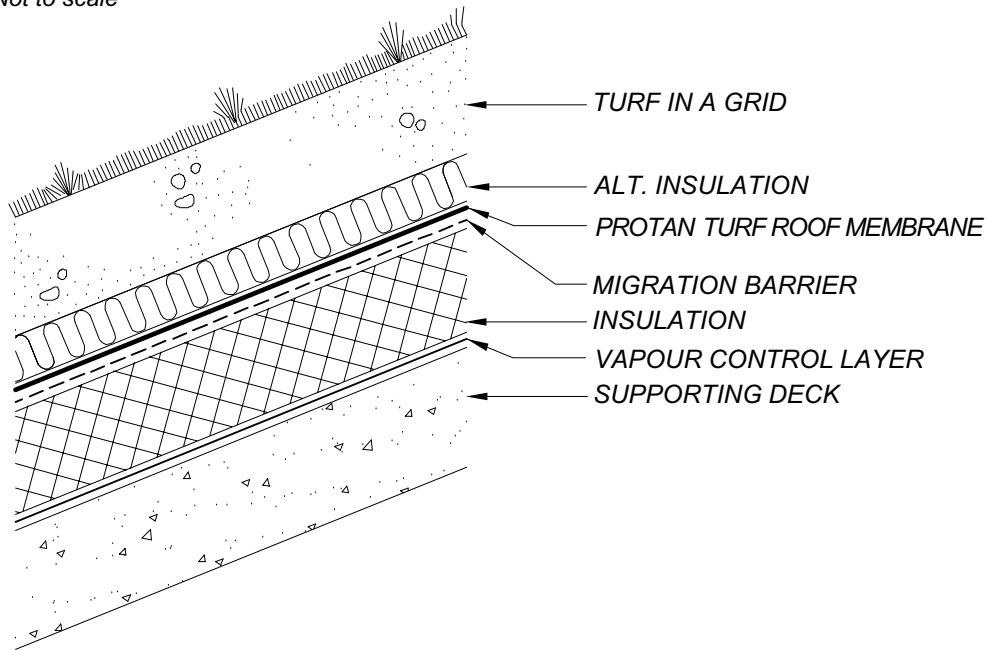
Pedestrian Deck – termination against wall detail

Drawing No.: 60-15-08
 Version No.: 02-2008
 Not to scale



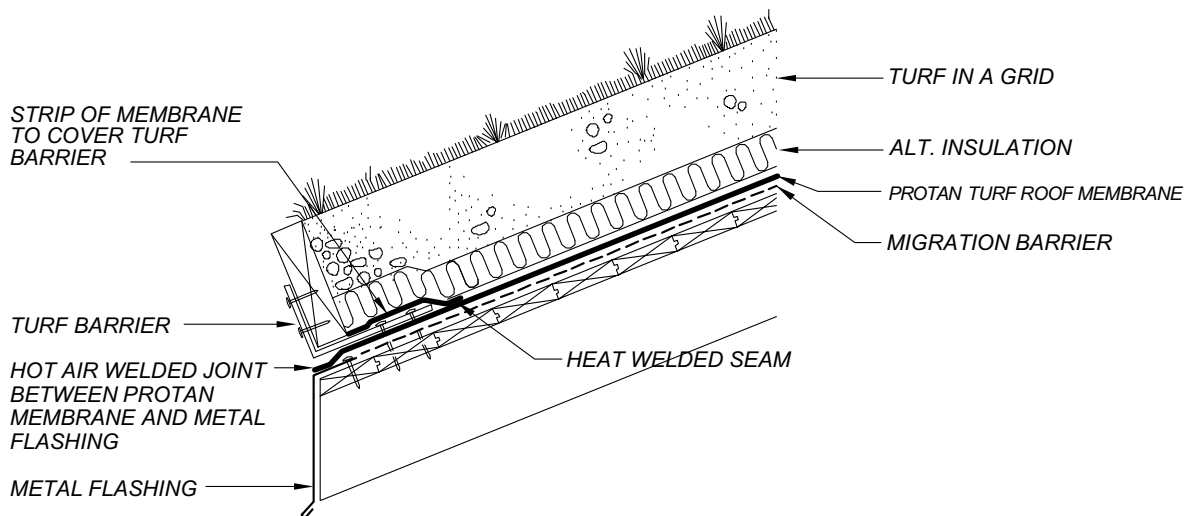
Green Roof – turf roof, sloped

Drawing No.: 60-20-01
Version No.: 02-2008
Not to scale



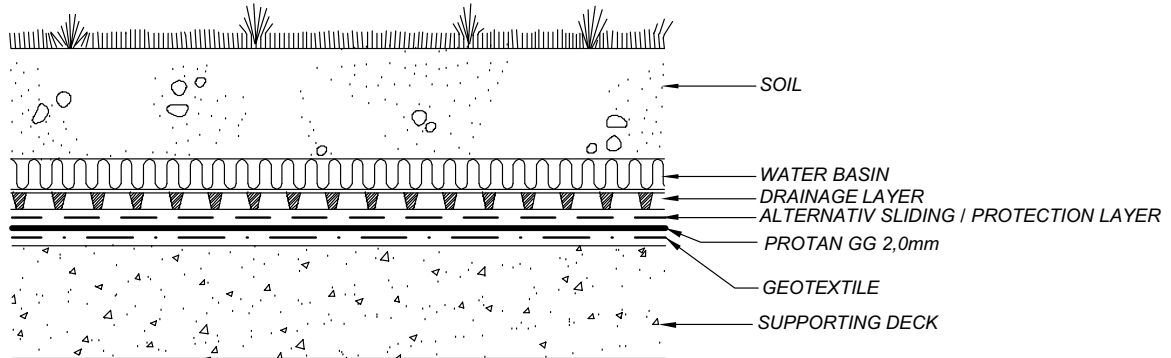
Green Roof – turf roof edge trim detail, sloped

Drawing No.: 60-20-02
Version No.: 02-2008
Not to scale



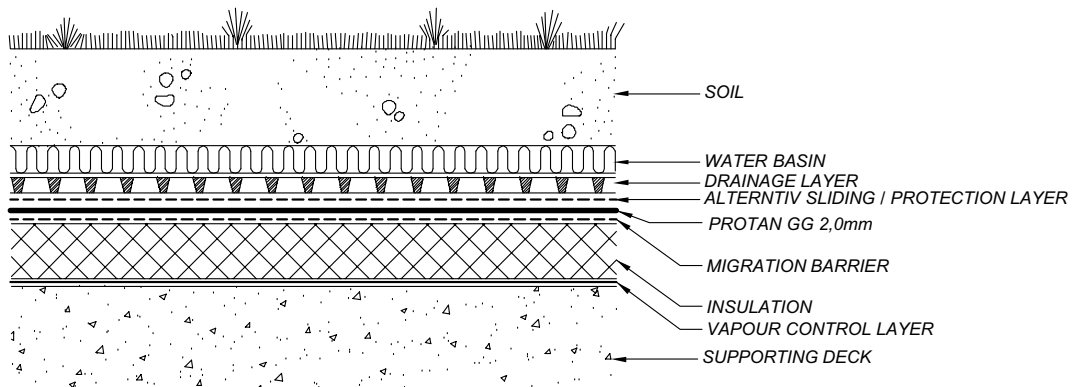
Green Roof – uninsulated

Drawing No.: 60-20-03
Version No.: 01-2004
Not to scale



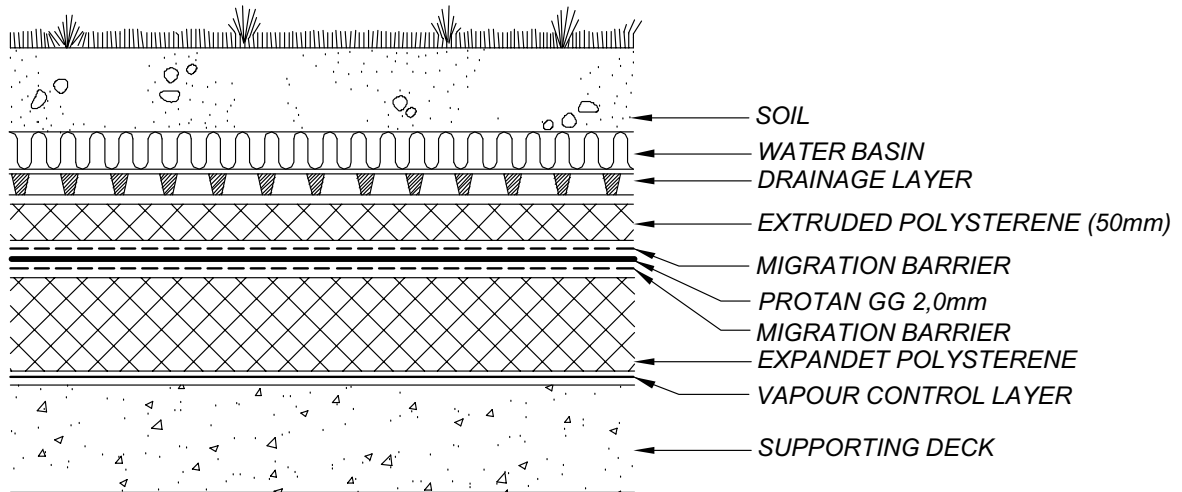
Green Roof – insulated

Drawing No.: 60-20-04
Version No.: 01-2004
Not to scale



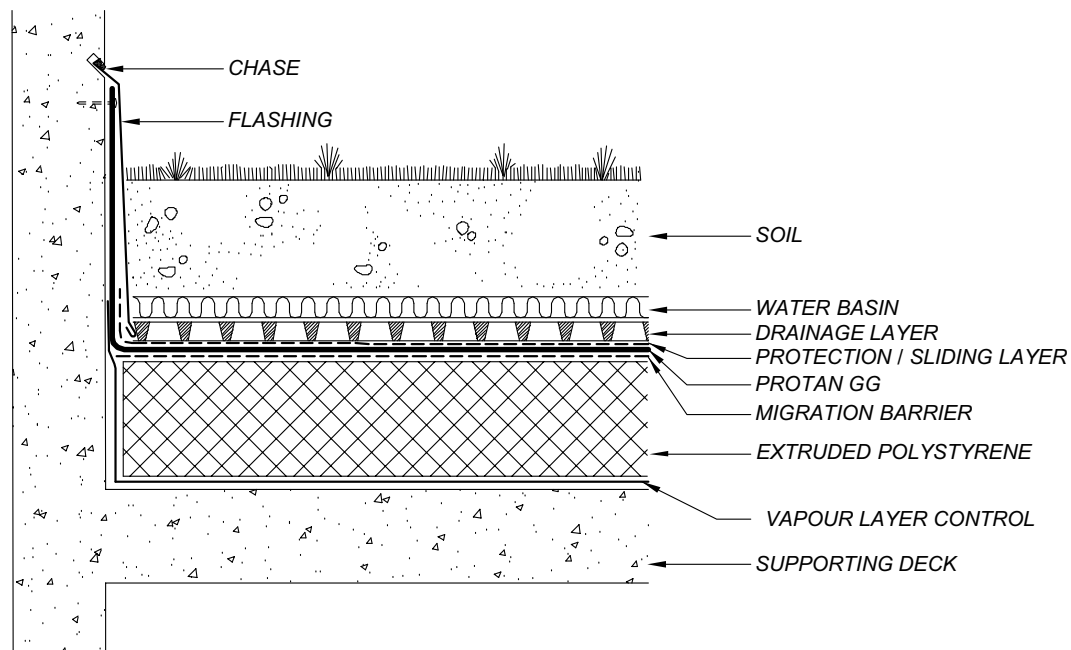
Green Roof – insulated duo construction

Drawing No.: 60-20-05
 Version No.: 01-2004
 Not to scale



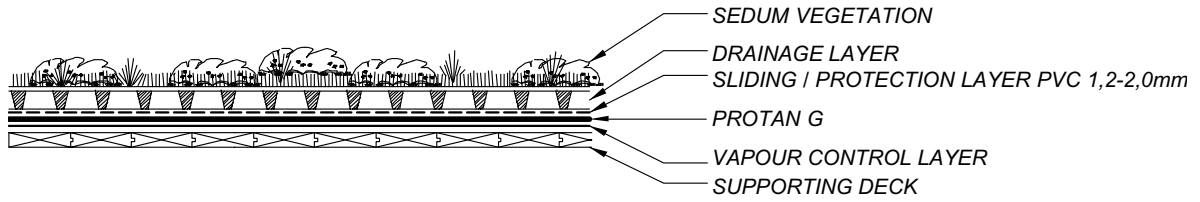
Green Roof – termination against wall detail

Drawing No.: 60-20-06
 Version No.: 01-2004
 Not to scale



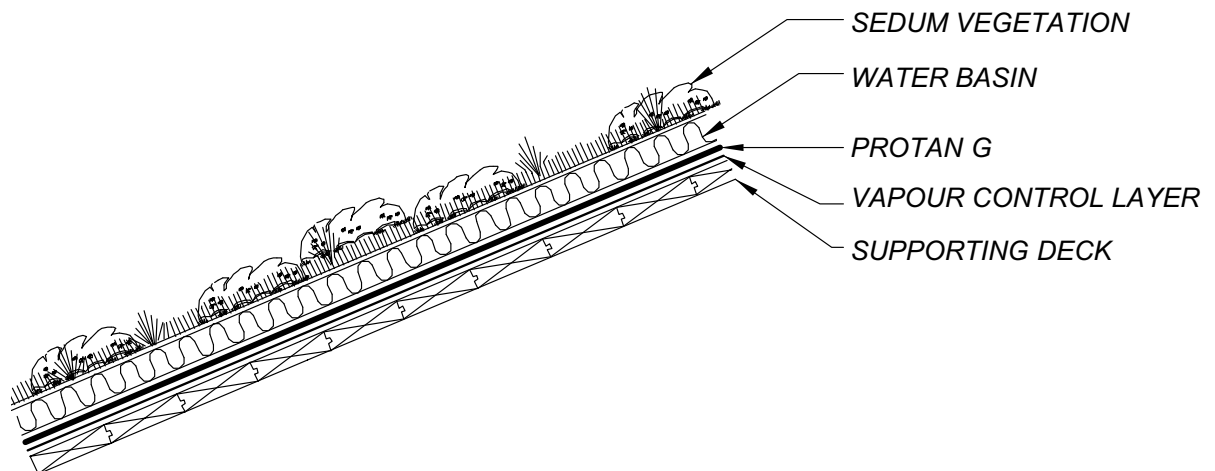
Sedum Roof - uninsulated, horizontal

Drawing No.: 60-25-01
Version No.: 02-2008
Not to scale



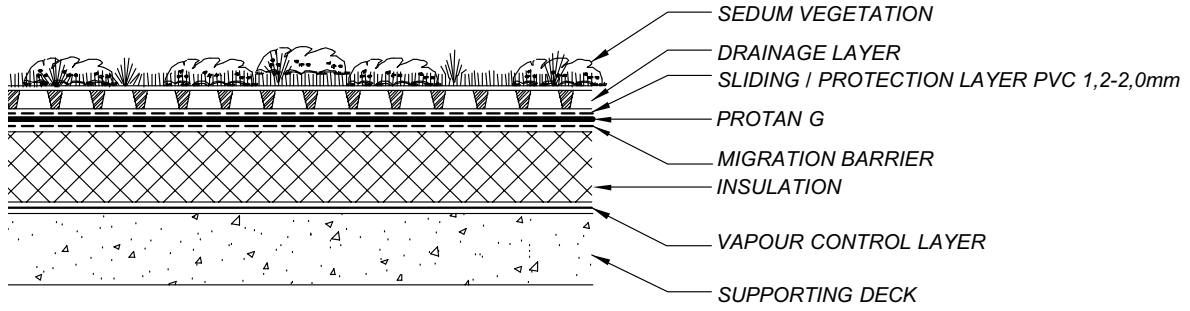
Sedum Roof - uninsulated, sloped

Drawing No.: 60-25-02
Version No.: 02-2008
Not to scale



Sedum Roof - insulated, horizontal

Drawing No.: 60-25-03
Version No.: 02-2008
Not to scale



Other technical drawings

Protan Exposed Membrane Roof



Protan Roof Renovation



Protan Terraces and Balconies



Protan Protected Membrane Roof

Protan Technical Drawings



Protan AS
P. O. Box 420 Brakerøya - N-3002 Drammen - Norway
Telephone +47 32 22 16 00 - Fax +47 32 22 17 00
www.protan.com

The information in this document is believed to be correct at the date of publication. Protan AS does not accept any liability for errors or omissions, or for any consequences resulting therefrom.