



Protan Exposed Membrane Roof

Technical Drawings



Protecting values

Protan Exposed Membrane Roof



Drawing No.:	Name:	Page:
40-10-01	Standard overlap – insulated.....	5
40-10-02	Standard overlap – uninsulated	5
40-15-01	Secret Fix System.....	6
40-20-01	Parapet with secret fix pocket + high wall termination detail	7
40-20-02	Parapet with secret fix strip detail	8
40-20-03	Parapet with secret fix pocket + low wall termination detail	9
40-20-04	Water check detail	10
40-20-05	Upstand termination with wall counter-flashing detail.....	10
40-20-06	Upstand termination bar detail.....	11
40-20-07	Edge trim detail.....	11
40-20-08	Valley flashing detail	12
40-20-09	Roof light kerb flashing detail with secret fix pocket.....	13
40-20-10	Roof light kerb flashing detail with secret fix strip	14
40-20-11	Upstand termination with compression counter flashing detail.....	15
40-20-12	Insulated parapet with secret fix pocket	15
40-25-01	Internal gutter detail – narrow girth.....	16
40-25-02	Internal gutter detail – wide girth with secret fix pocket	15
40-25-03	Ridge flashing detail	17
40-30-01	Drainage – outlet with factory attached Protan Membrane.....	18
40-30-02	Drainage – clamp ring outlet	18
40-30-03	Drainage – syphonic outlet a).....	19
40-30-04	Drainage – syphonic outlet b).....	19
40-30-05	Drainage – through wall outlet.....	20
40-35-01	Pipe flashing detail – continuous	21
40-35-02	Pipe flashing detail – closed	21
40-40-01	Expansion joint detail	22
40-45-02	Walkway – normal duty	23
40-50-01	Omega architectural profile.....	24
40-50-02	Triangular architectural profile	24
40-55-01	Vacuum Roofing System – general.....	26
40-55-02	Vacuum Roofing System – parapet detail	26
40-55-03	Vacuum Roofing System – vacuum vent detail.....	27
40-55-04	Vacuum Roofing System – outlet detail	27
40-60-01	Adhered Roofing System – general	28

Separation layers for Protan PVC membranes

A separation layer/barrier between the roofing membrane and its underlying deck, is sometimes necessary to protect the roofing material from chemical and/or mechanical influences.

The separation layer must be functional under all conditions that the roofing membrane might experience during its entire lifetime.

- Migration barriers are installed between two layers to avoid chemical interaction between them.
- Sliding layers are installed between two layers to prevent friction between them.
- Levelling layers are installed between two layers mainly for aesthetic reasons.
- Protection layers are installed on top of the membrane mainly to protect it from mechanical stress etc.
(Protan recommends a layer of PVC 1,2-2,0mm, alternatively a very thick polypropylene fleece > 300g/m².)

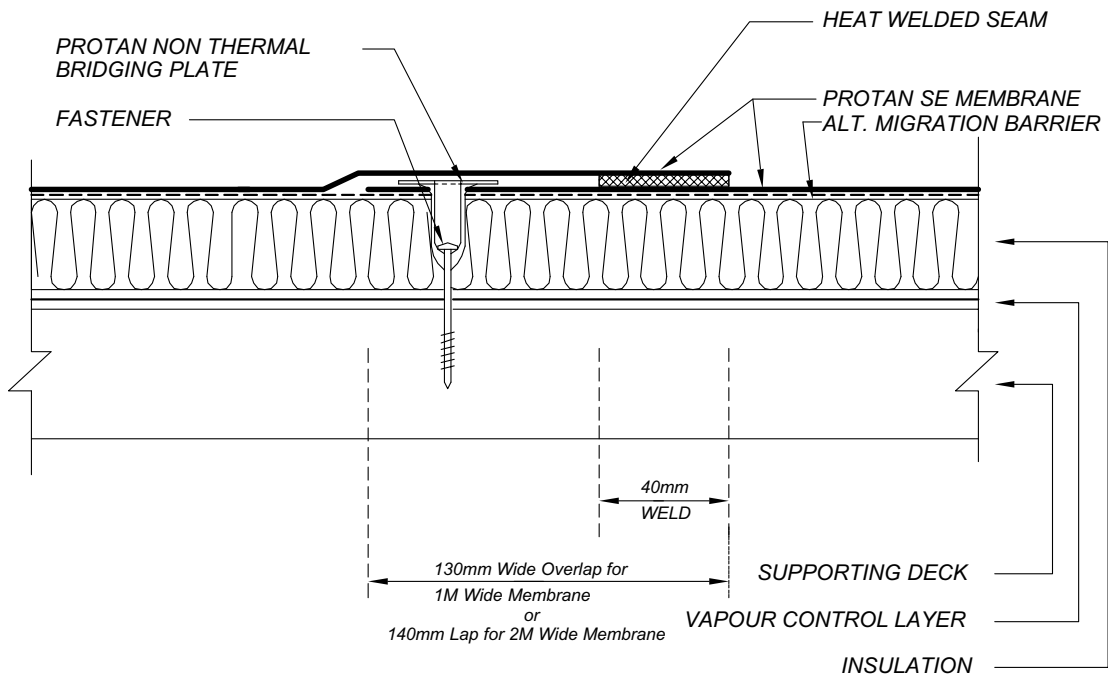
Table: Separation layers for Protan PVC

Underlying deck	Protan PVC-membrane	
Old bitumen roofs	<p>Protan EX Protan EX has a 140 g/m² polypropylene fleece migration barrier laminated on the reverse side</p>	<p>Protan SE Protan SE requires a separate migration barrier installed on top of the bitumen surface to avoid migration. Protan recommends: Fibertex F2B, 140g/m² polypropylene, supplied by Protan AS</p>
EPS/XPS-insulation	<p>Protan EXG Protan EXG has a 60g/m² glass fleece migration barrier laminated on the reverse side</p>	<p>Protan SE Protan SE requires a separate migration barrier installed on top of the bitumen surface to avoid migration. Protan recommends: Glass fleece 50g/m² supplied by Protan AS</p>
Bases of smooth concrete or light weight concrete	<p>Protan SE Protan SE requires a sliding/levelling layer installed on top of the concrete deck. Protan recommends: Fibertex F4M 300 g/m² PP, supplied by Protan AS. Note! Polyester felt must not be used on concrete!</p>	
Timber decks	As for old bitumen roofs	
Rubber, such as underlying blocks, mats, packing etc.	As for old bitumen roofs	
Old mechanically fastened polymeric membrane	As for old bitumen roofs (140g/m ² polypropylene fleece/geo-textile). Existing membrane to be slit at perimeters, change of angle, fixing lines etc to alleviate any stress/tension transfer to new fasteners and to assist in the drying out of any trapped moisture	
Old gravel ballasted polymeric membrane	Where possible the existing membrane should be removed, if this is not feasible, the existing membrane should be slit at perimeters, change of angle, fixing points etc to alleviate any stress/tension transfer to new fasteners and to assist in the drying out of any trapped moisture	
Lubricated roofs	Lubricated roofs should be evaluated, please contact Protan Technical Services	

Please contact Protan for a list of other tested and approved products for the use as separation layers.

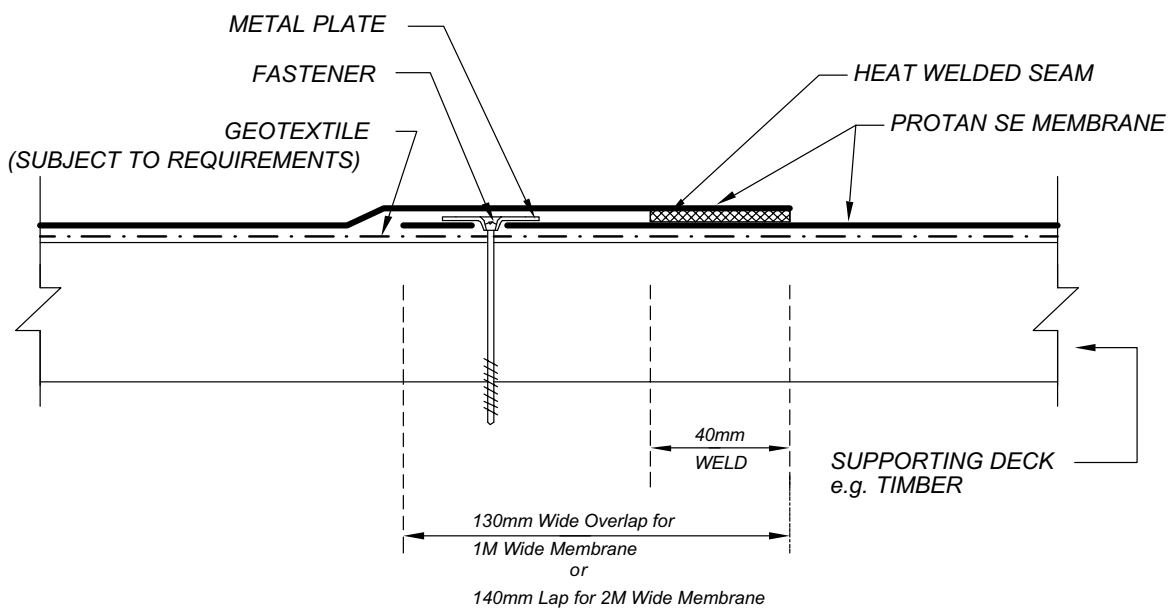
Standard overlap – insulated

Drawing No.: 40-10-01
 Version No.: 02-2008
 Not to scale



Standard overlap – uninsulated

Drawing No.: 40-10-02
 Version No.: 02-2008
 Not to scale

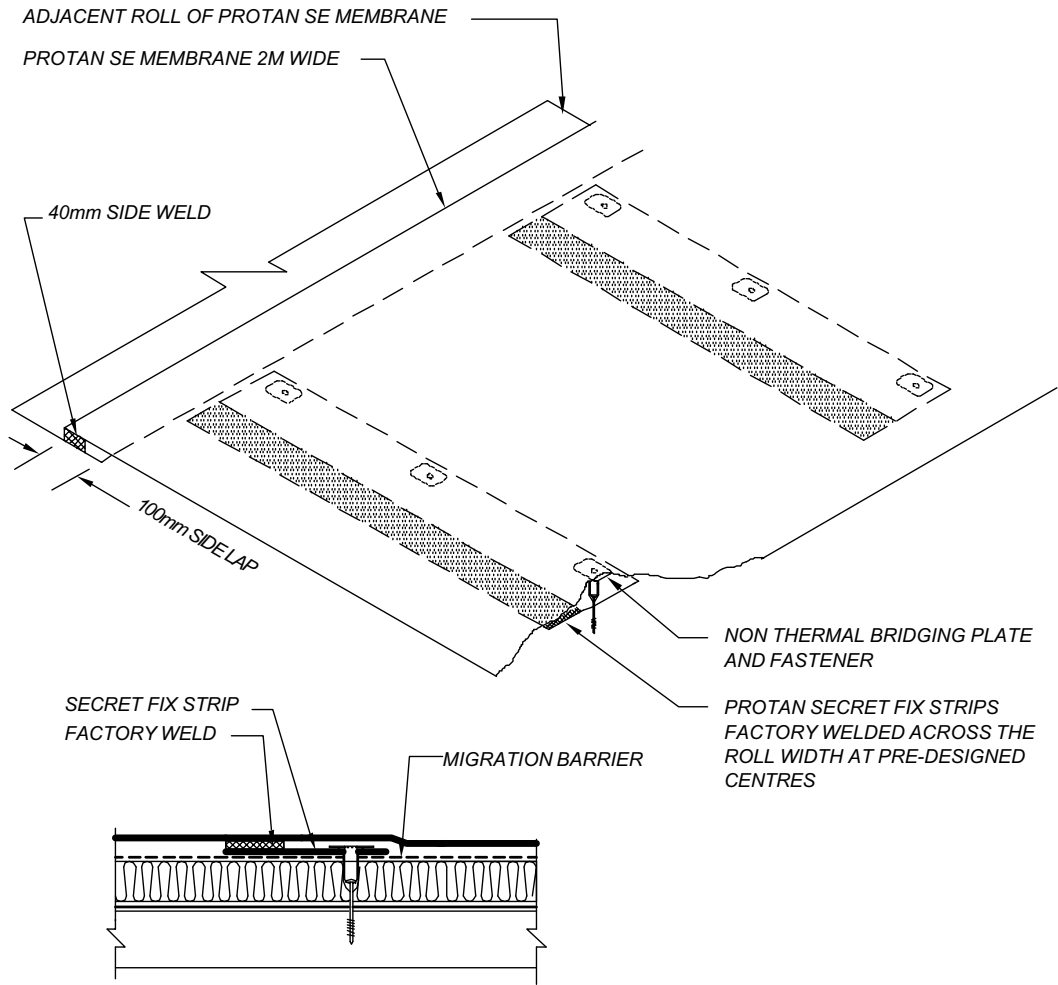


Secret Fix System

Drawing No.: 40-15-01

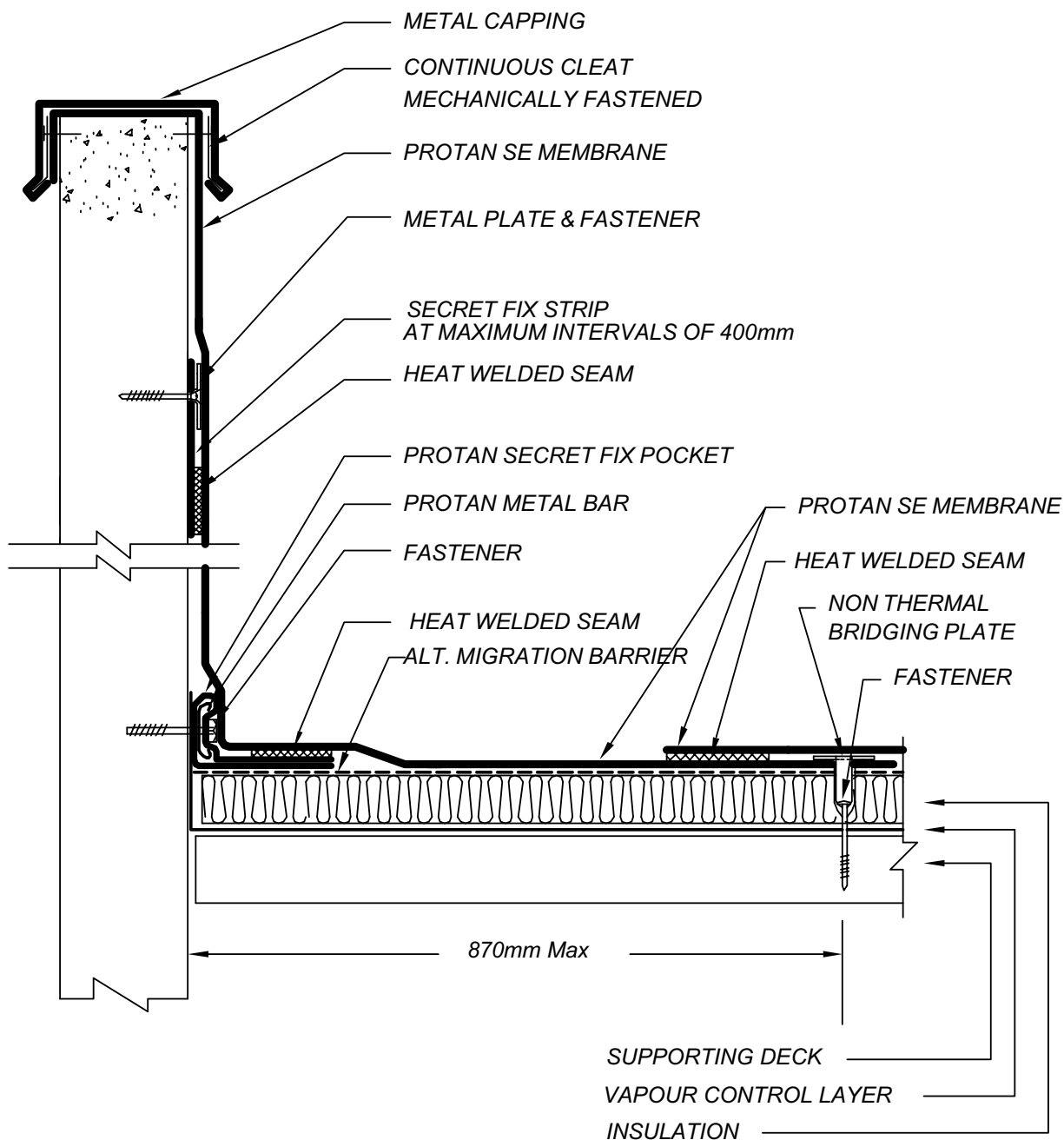
Version No.: 01-2004

Not to scale



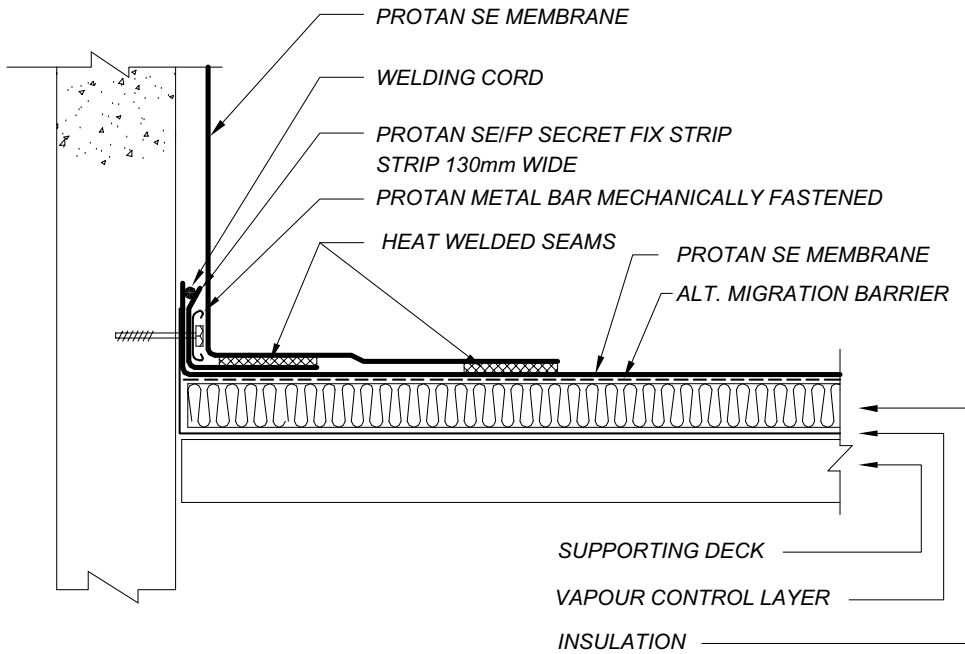
Parapet with secret fix pocket + high wall termination detail

Drawing No.: 40-20-01
Version No.: 01-2004
Not to scale



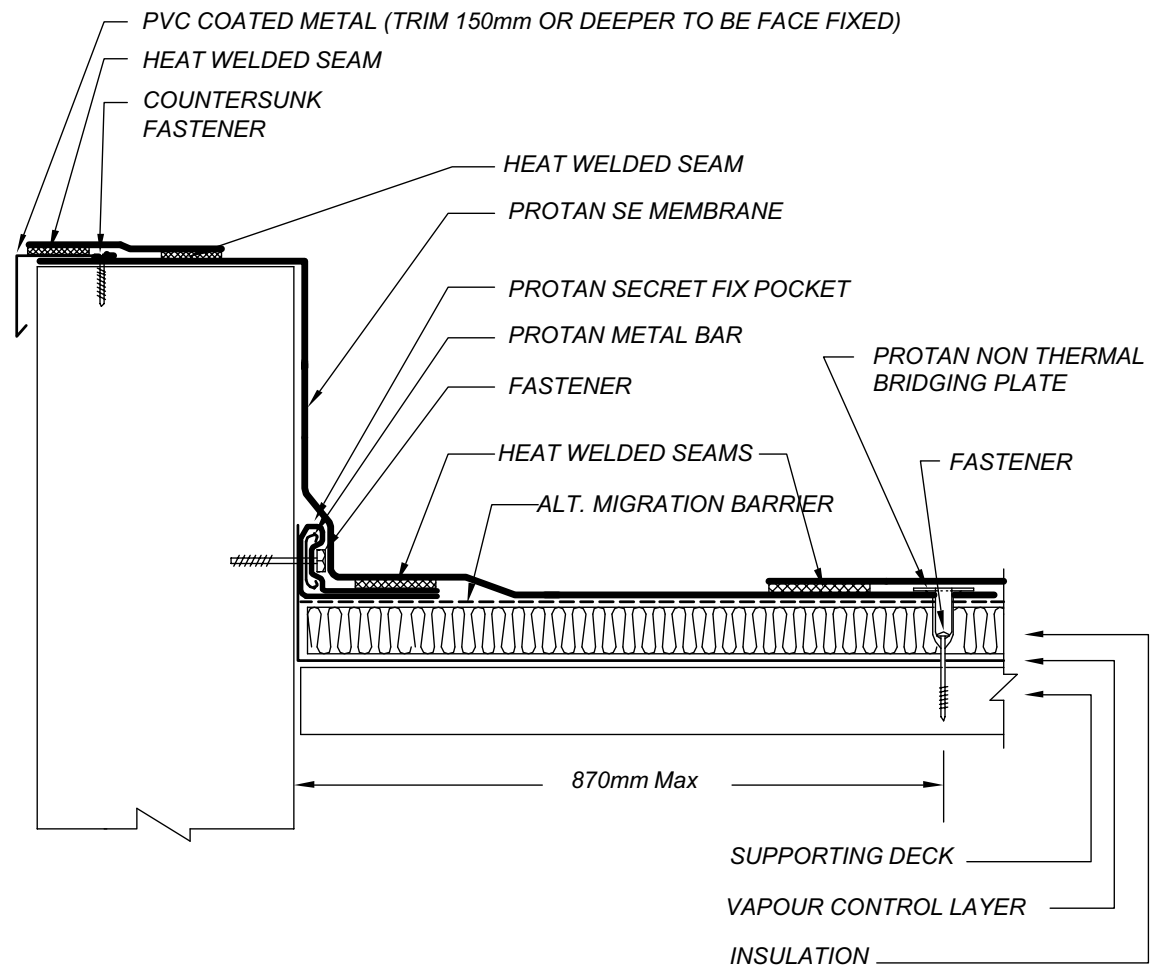
Parapet with secret fix strip detail

Drawing No.: 40-20-02
Version No.: 02-2008
Not to scale



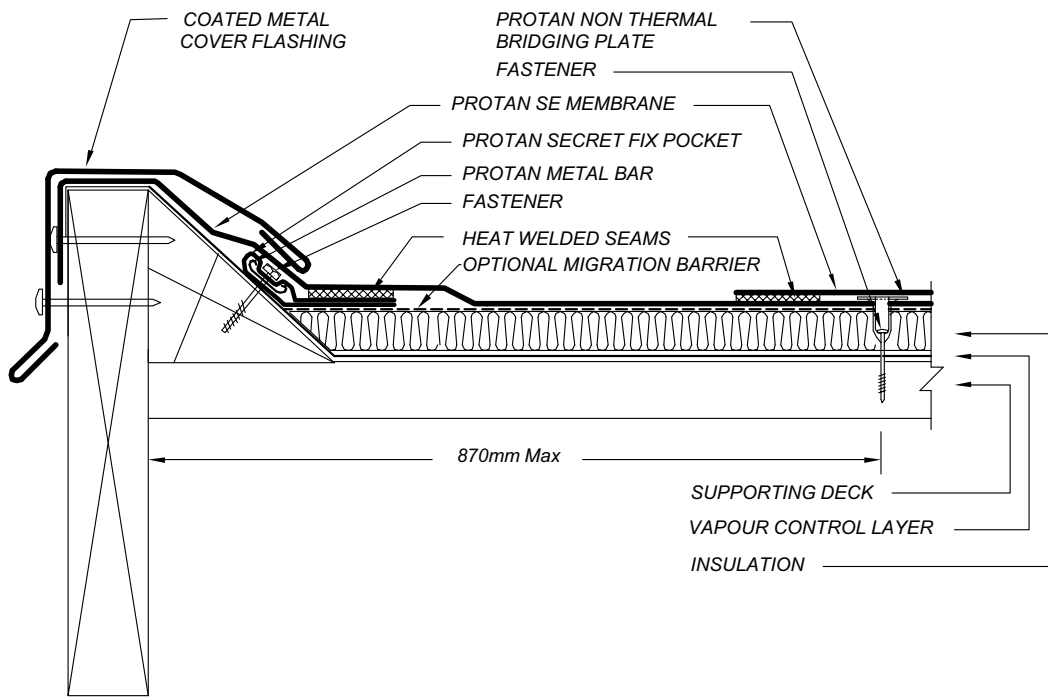
Parapet with secret fix pocket + low wall termination detail

Drawing No.: 40-20-03
Version No.: 01-2004
Not to scale



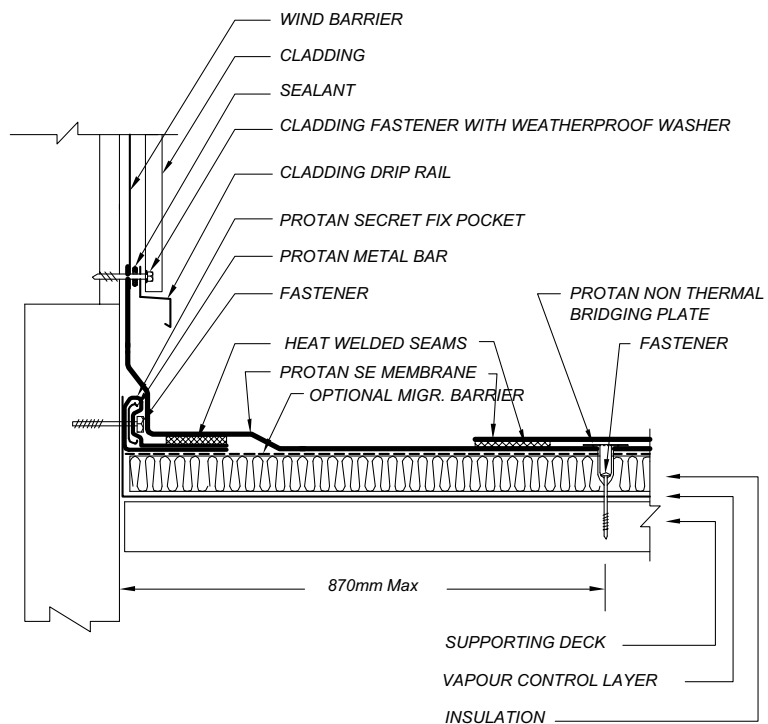
Water check detail

Drawing No.: 40-20-04
 Version No.: 01-2004
 Not to scale



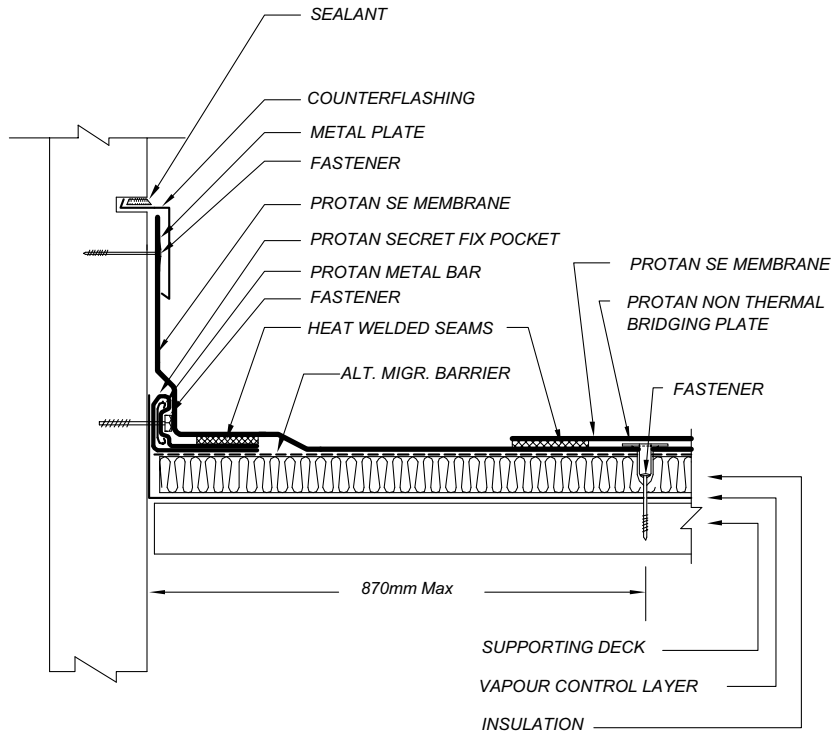
Upstand termination with wall counter-flashing detail

Drawing No.: 40-20-05
 Version No.: 01-2004
 Not to scale



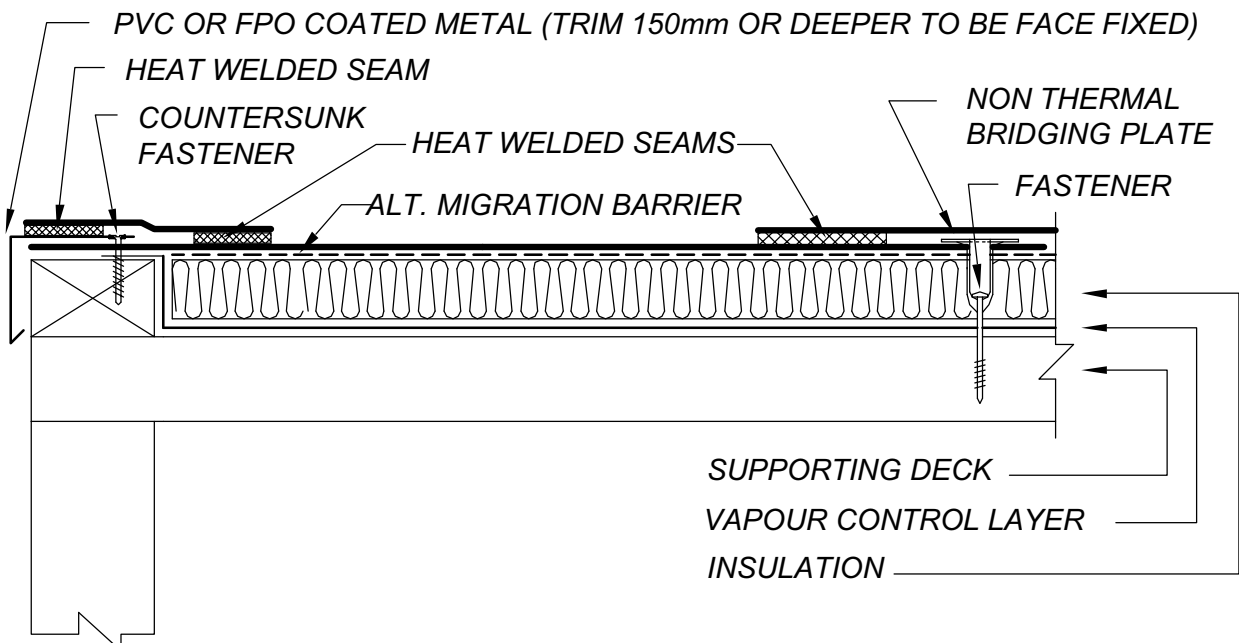
Upstand termination bar detail

Drawing No.: 40-20-06
 Version No.: 01-2004
 Not to scale



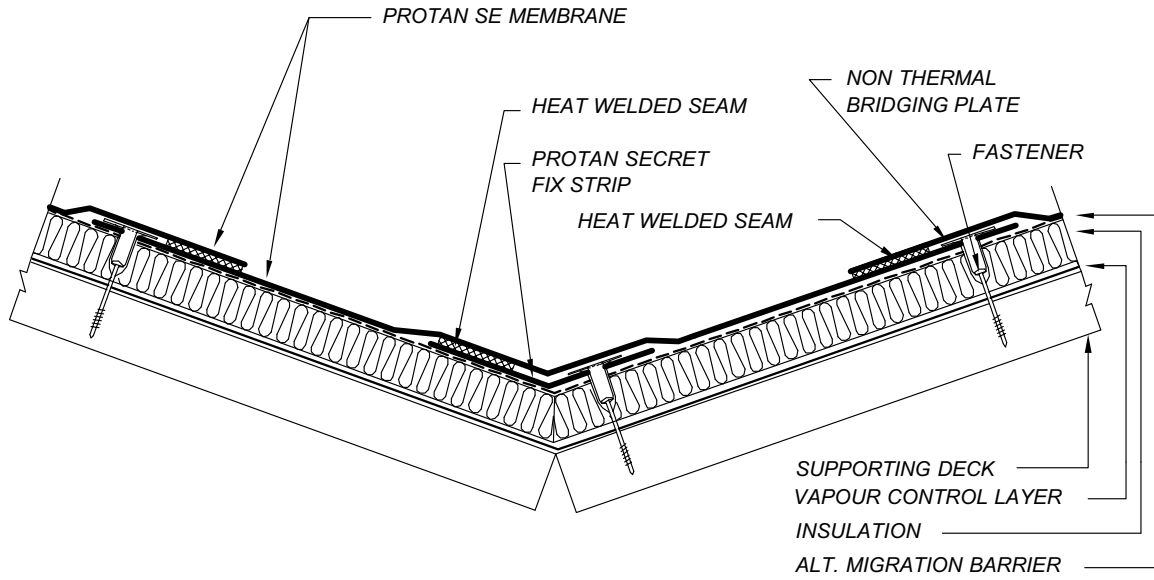
Edge trim detail

Drawing No.: 40-20-07
 Version No.: 01-2004
 Not to scale



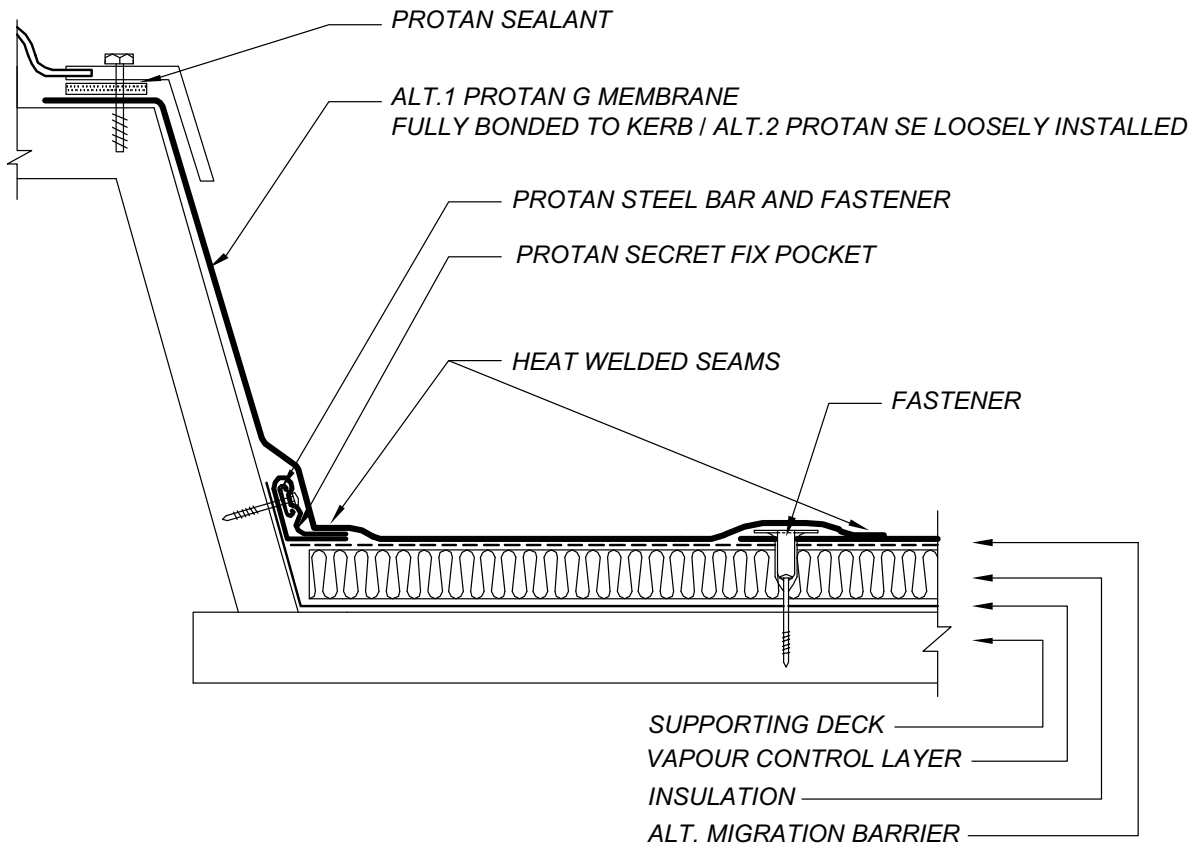
Valley flashing detail

Drawing No.: 40-20-08
Version No.: 02-2008
Not to scale



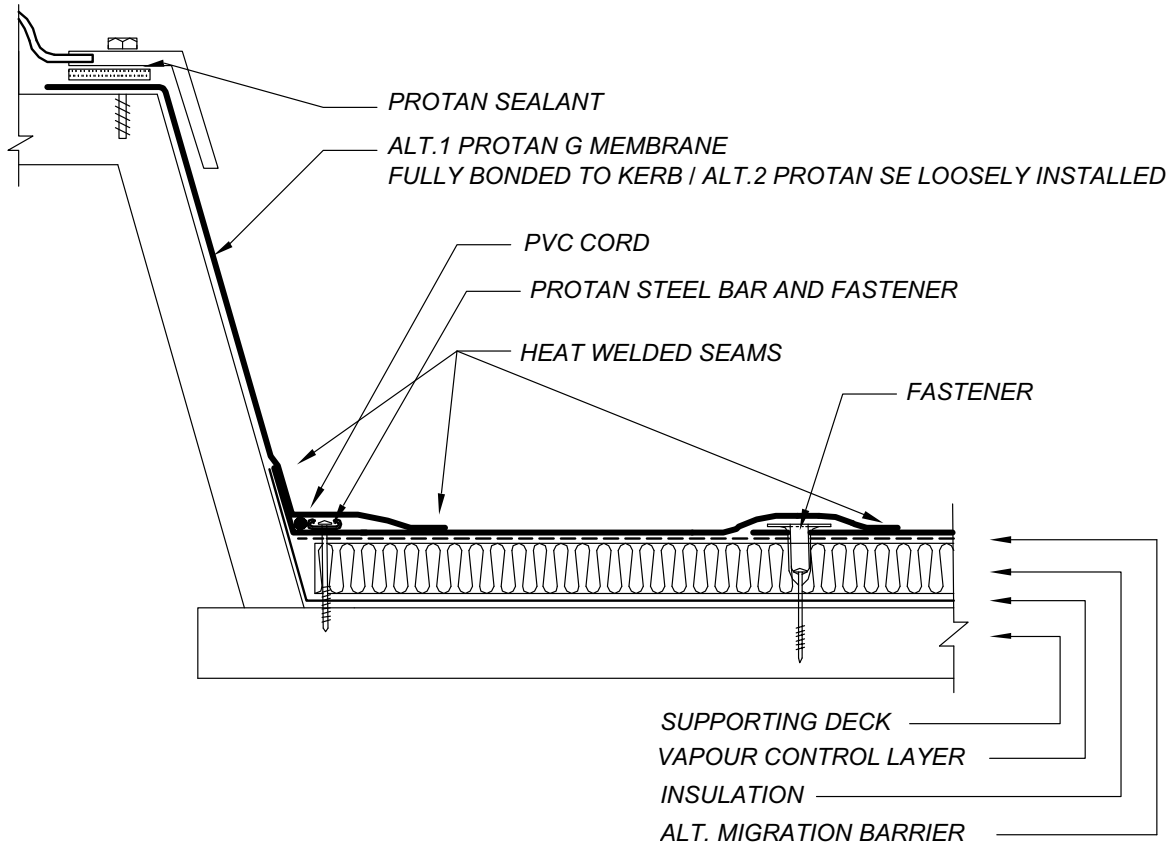
Roof light kerb flashing detail with secret fix pocket

Drawing No.: 40-20-09
Version No.: 01-2004
Not to scale



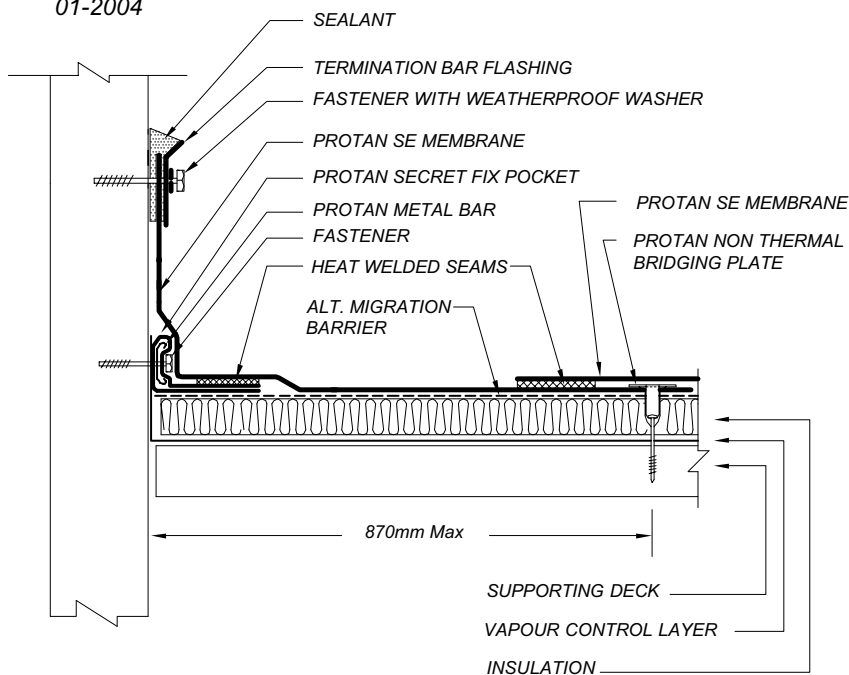
Roof light kerb flashing detail with secret fix strip

Drawing No.: 40-20-10
Version No.: 01-2004
Not to scale



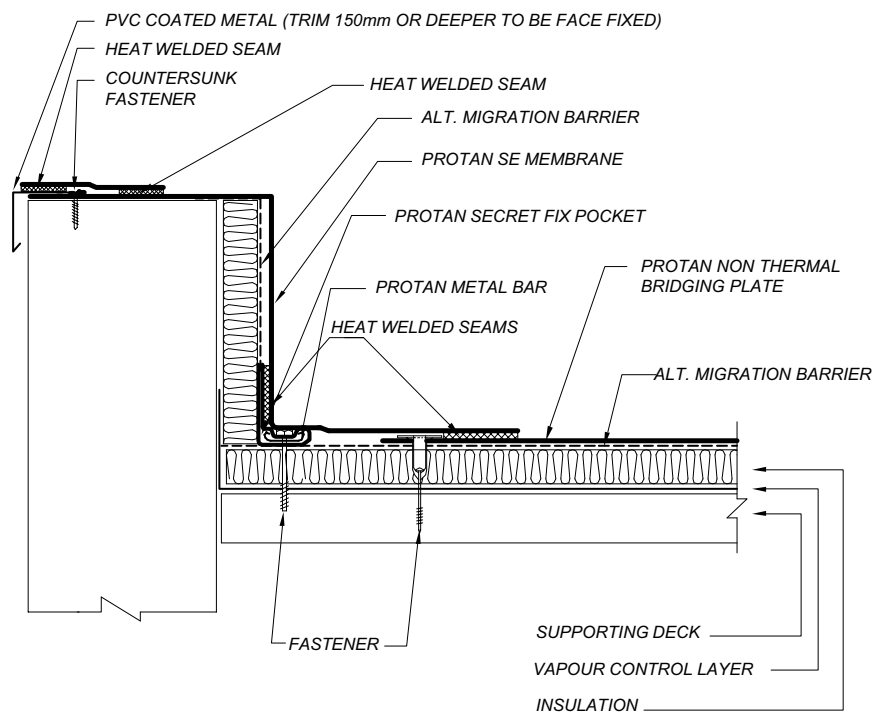
Upstand termination with compression counter flashing detail

Drawing No.: 40-20-11
 Version No.: 01-2004
 Not to scale



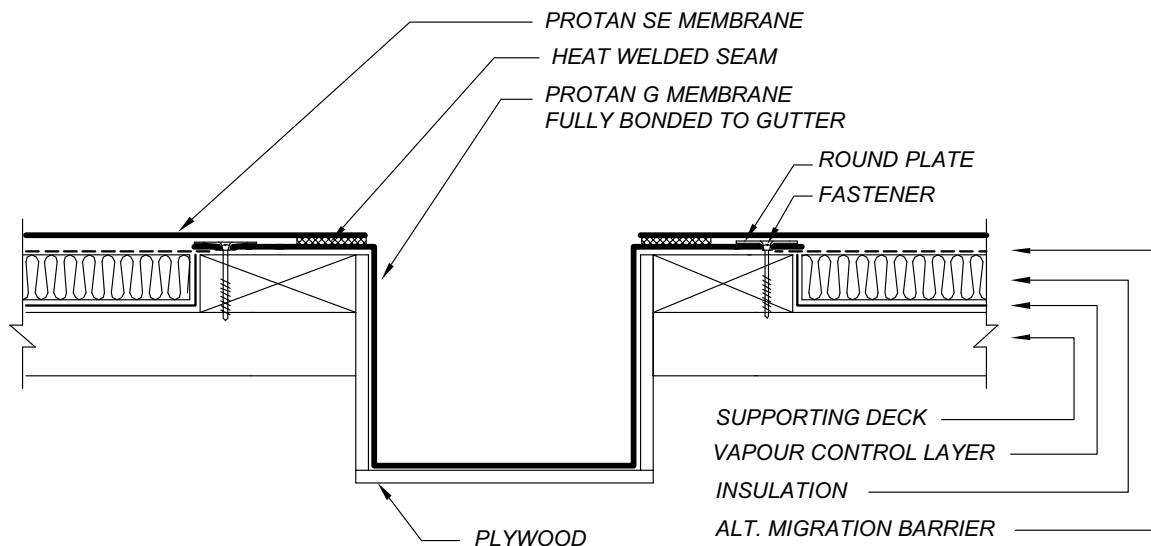
Insulated parapet with secret fix pocket

Drawing No.: 40-20-12
 Version No.: 01-2004
 Not to scale



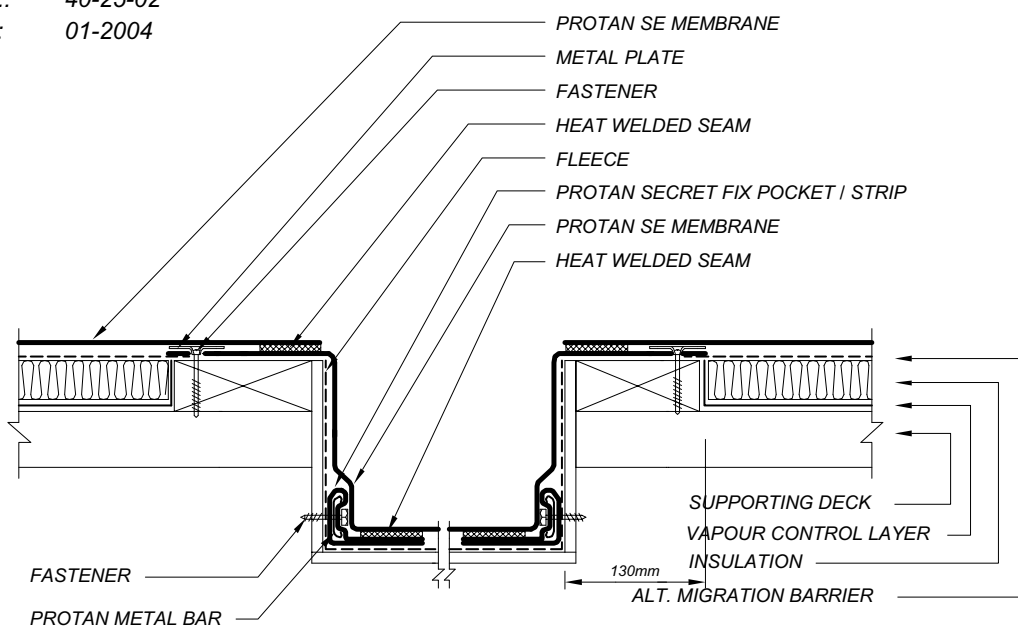
Internal gutter detail – narrow girth

Drawing No.: 40-25-01
 Version No.: 01-2004
 Not to scale



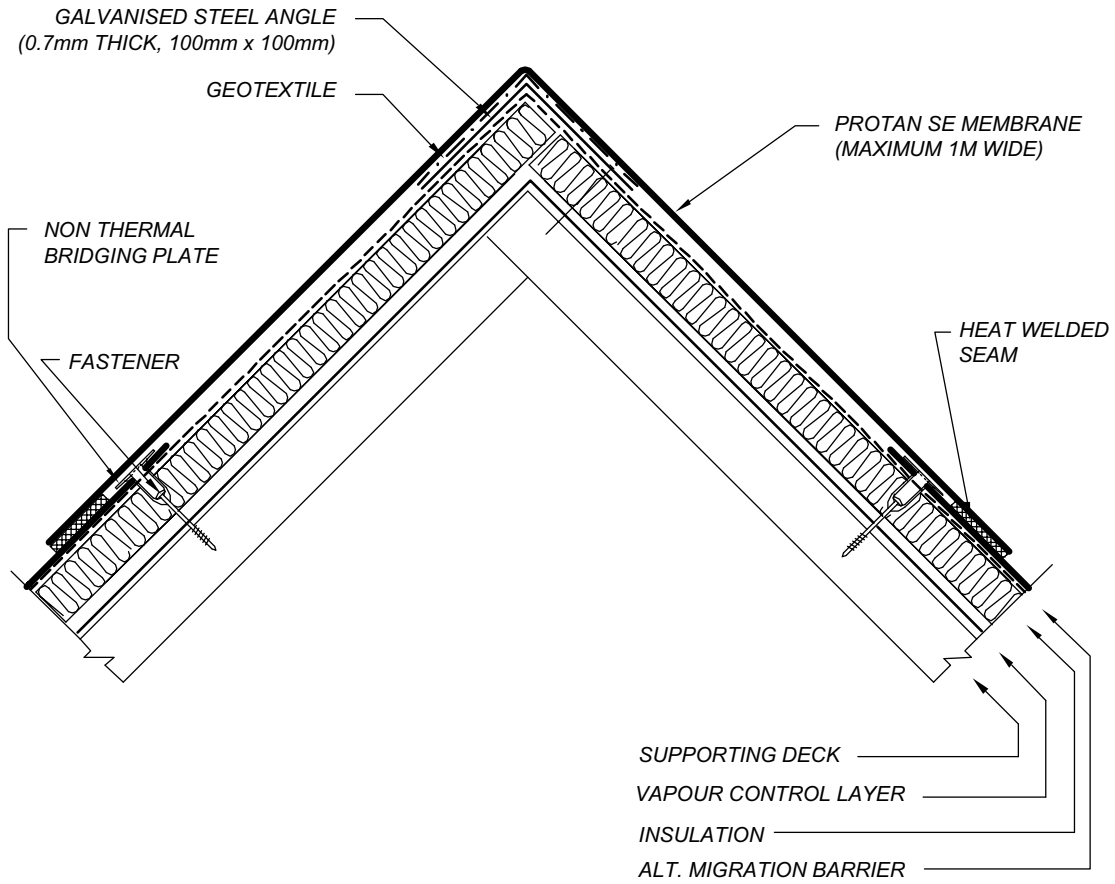
Internal gutter detail – wide girth with secret fix pocket

Drawing No.: 40-25-02
 Version No.: 01-2004
 Not to scale



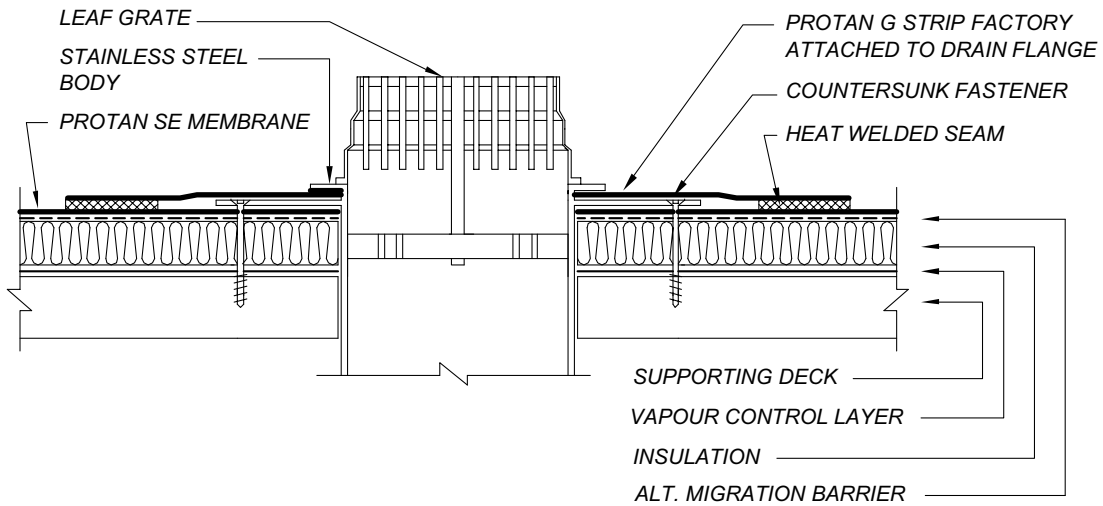
Ridge flashing detail

Drawing No.: 40-25-03
Version No.: 02-2008
Not to scale



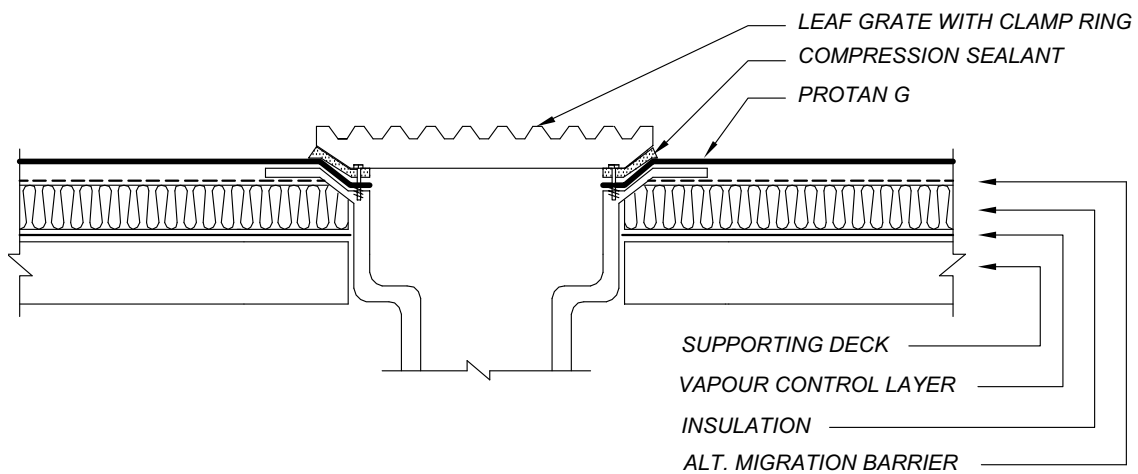
Drainage – outlet with factory attached Protan Membrane

Drawing No.: 40-30-01
Version No.: 01-2004
Not to scale



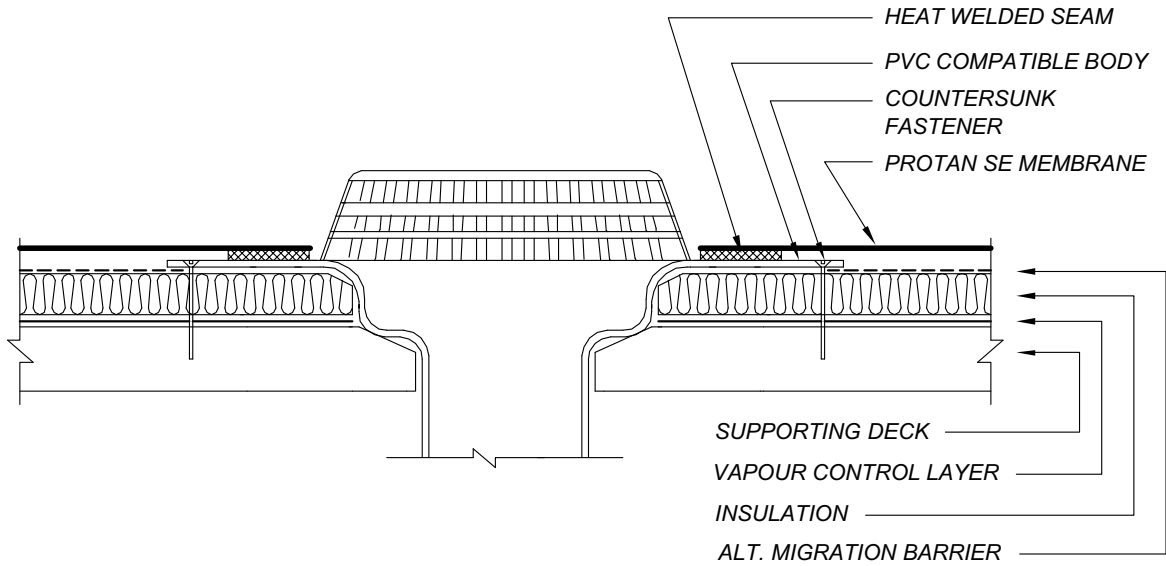
Drainage – clamp ring outlet

Drawing No.: 40-30-02
Version No.: 02-2008
Not to scale



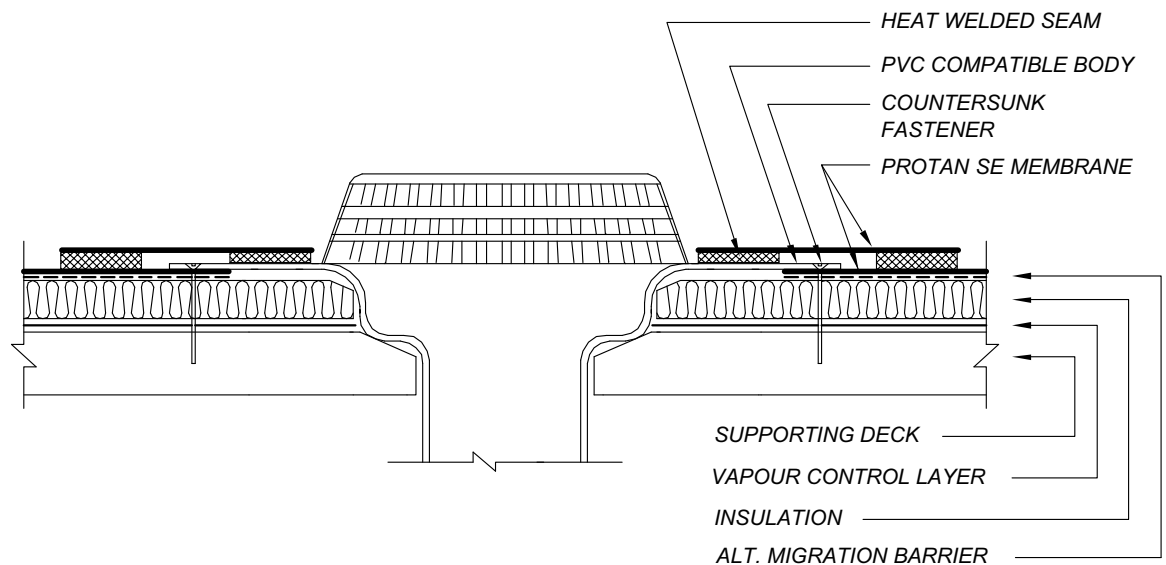
Drainage – syphonic outlet a)

Drawing No.: 40-30-03
Version No.: 01-2004
Not to scale



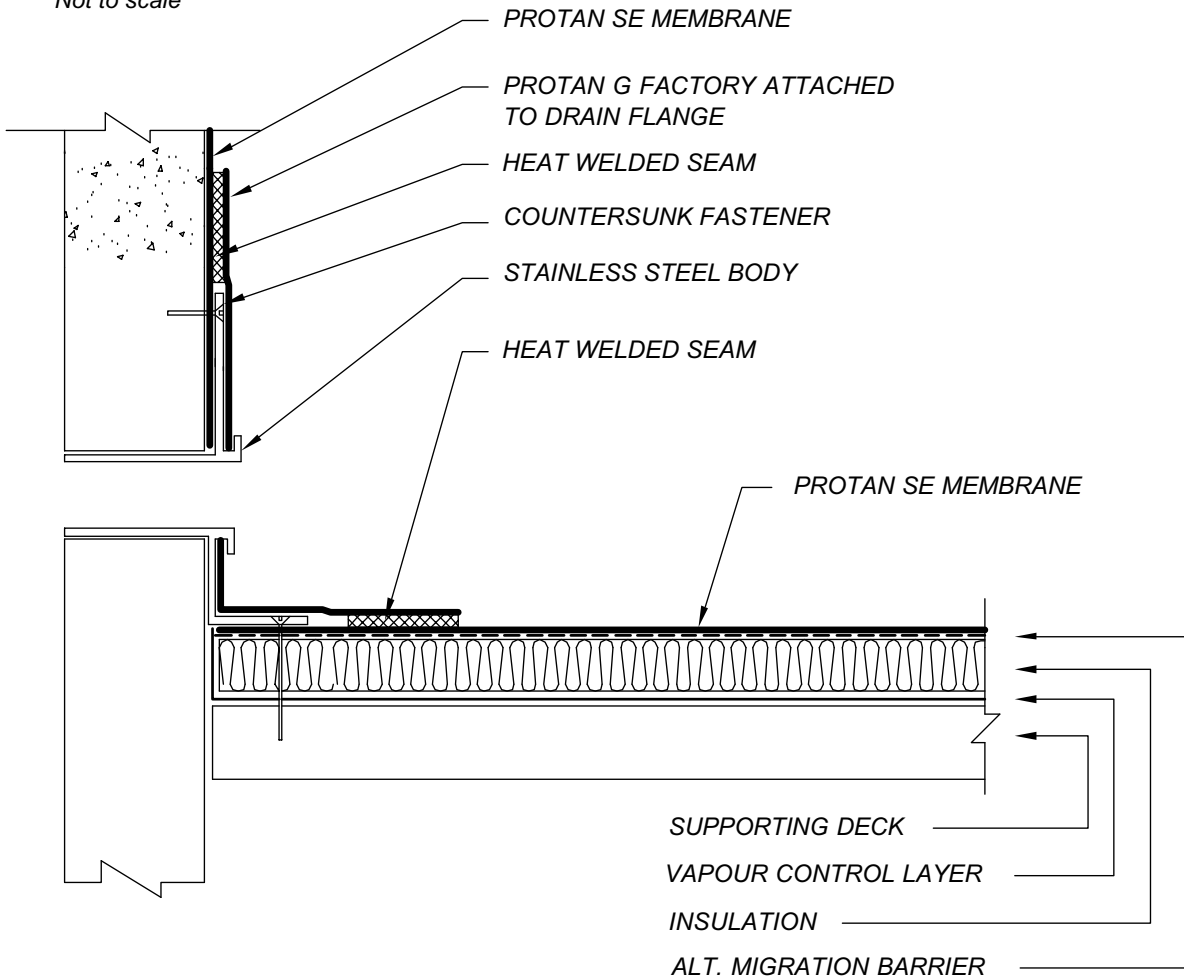
Drainage – syphonic outlet b)

Drawing No.: 40-30-04
Version: 01-2004
Not to scale



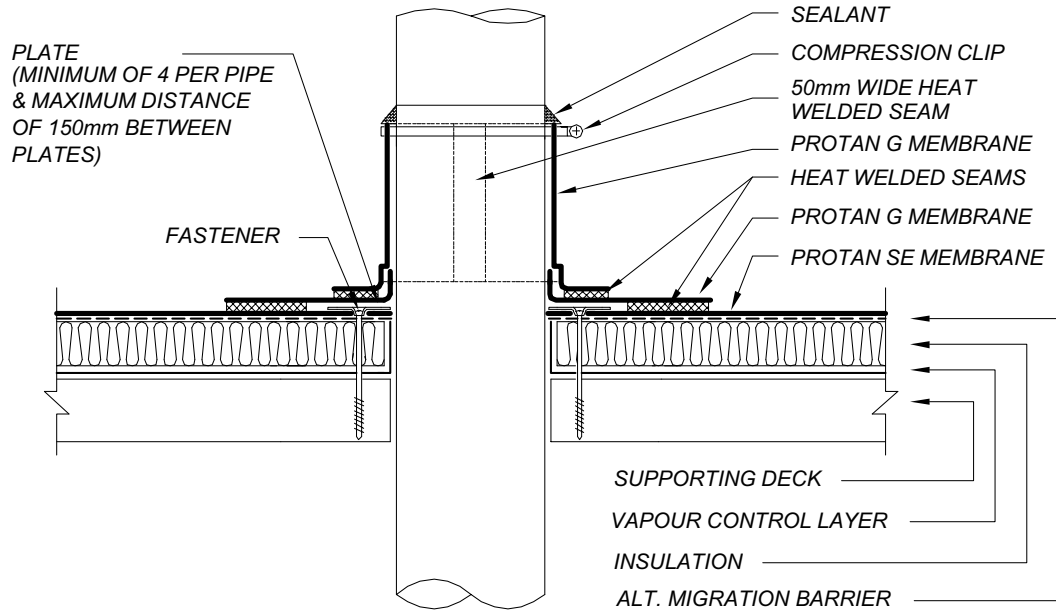
Drainage - through wall outlet

Drawing No.: 40-30-05
Version No.: 01-2004
Not to scale



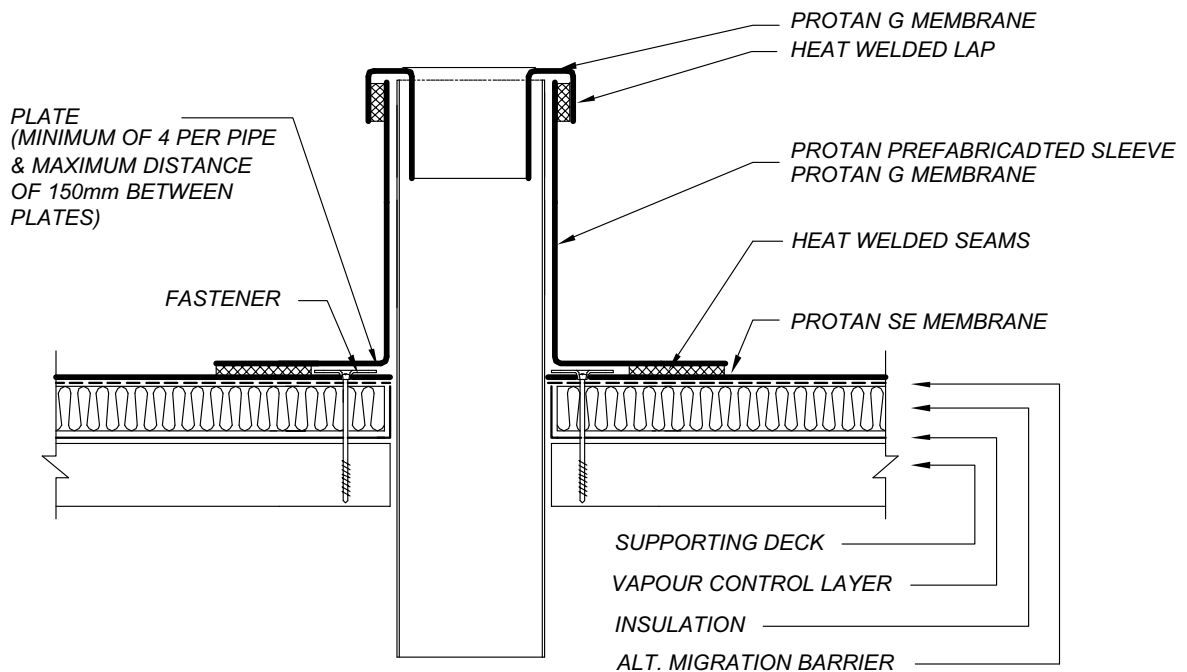
Pipe flashing detail – continuous

Drawing No.: 40-35-01
 Version No.: 01-2004
 Not to scale



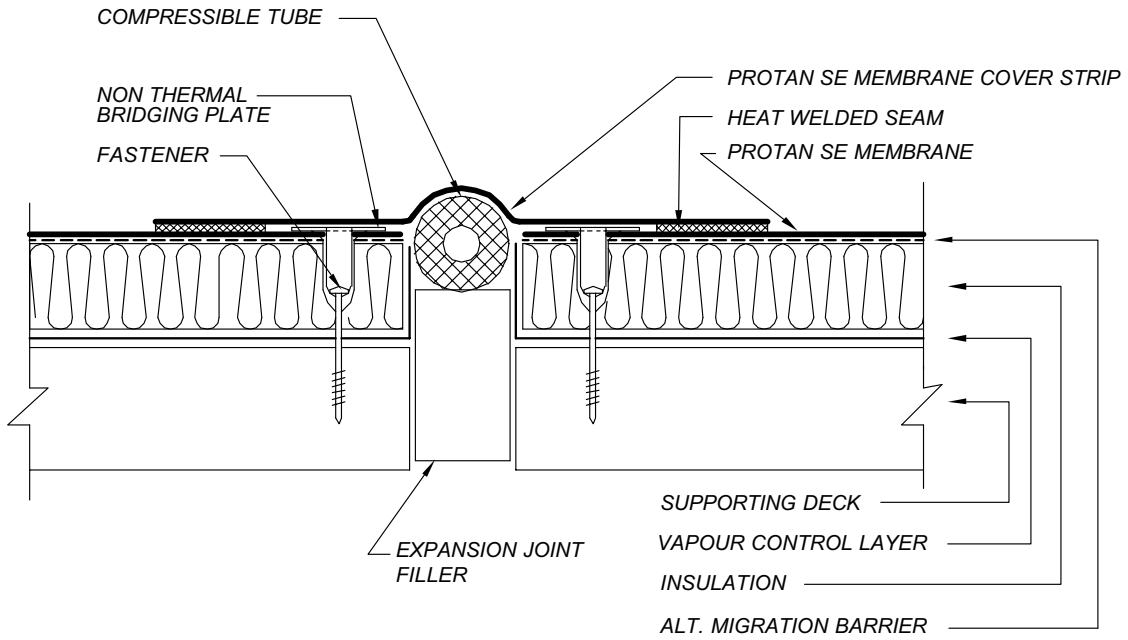
Pipe flashing detail- closed

Drawing No.: 40-35-02
 Version No.: 01-2004
 Not to scale



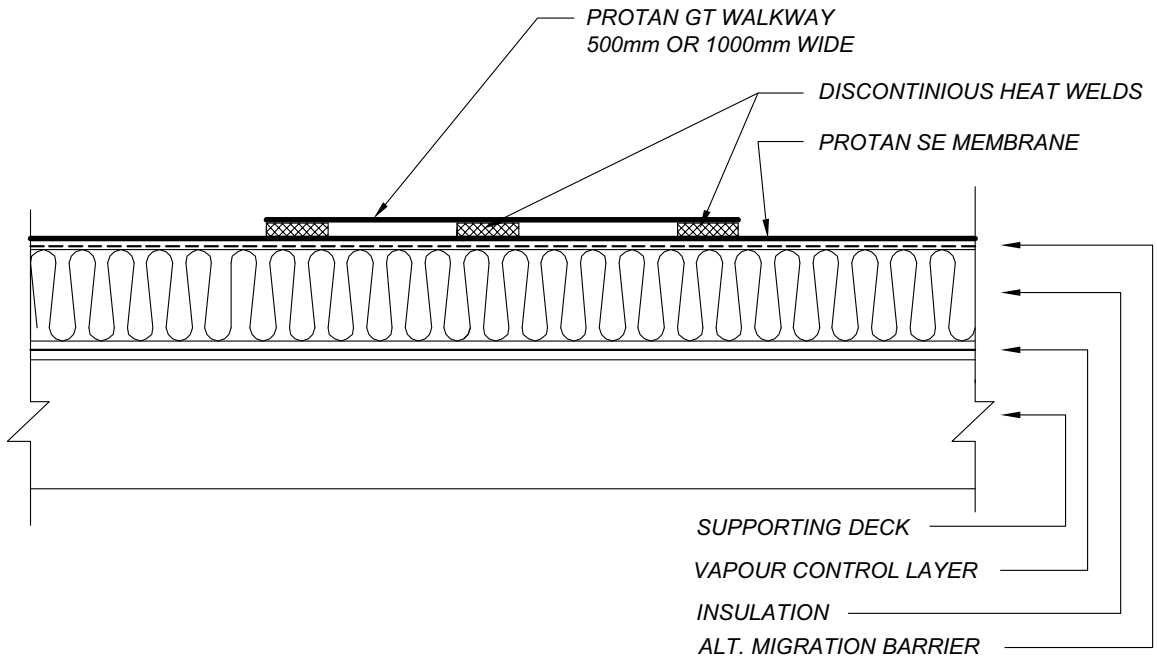
Expansion joint detail

Drawing No.: 40-40-01
Version No.: 02-2008
Not to scale



Walkway – normal duty

Drawing No.: 40-45-02
Version No.: 01-2004
Not to scale

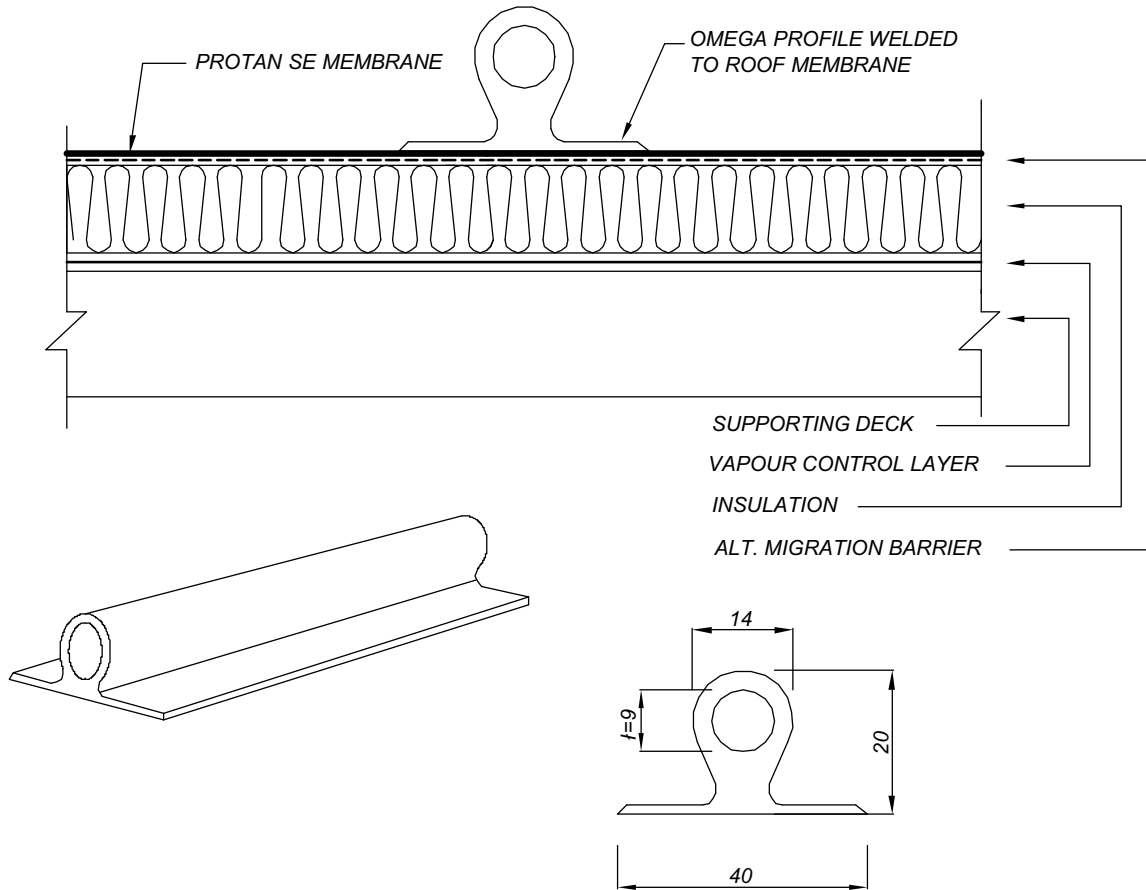


Omega architectural profile

Drawing No.: 40-50-01

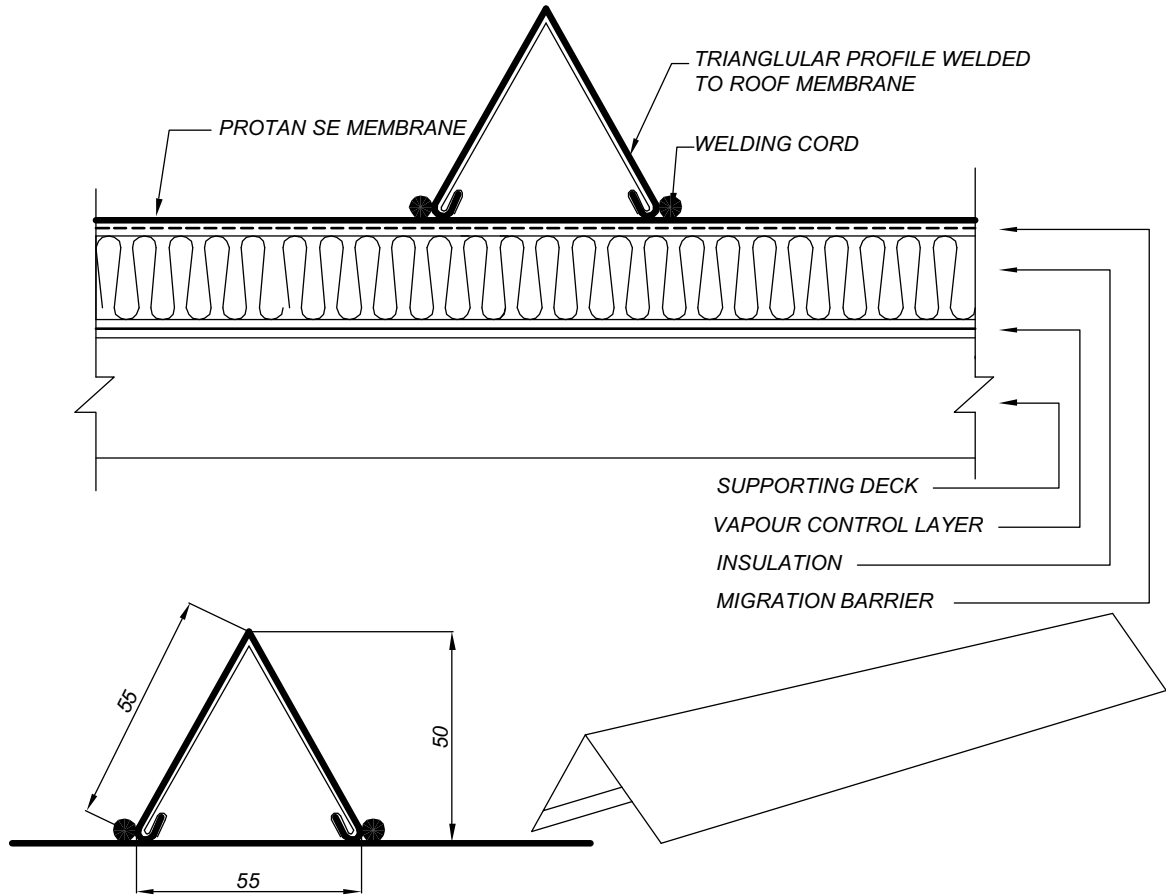
Version No.: 01-2004

Not to scale



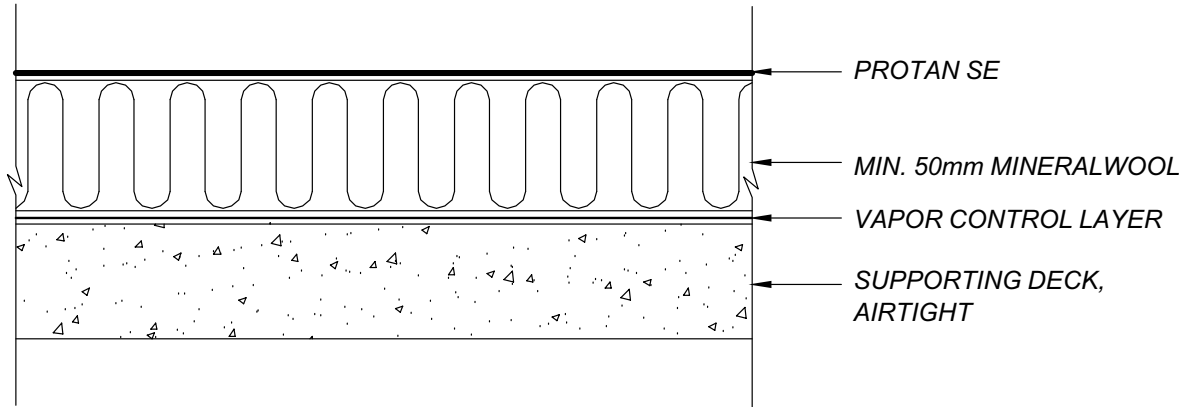
Triangular architectural profile

Drawing No.: 40-50-02
Version No.: 01-2004
Not to scale



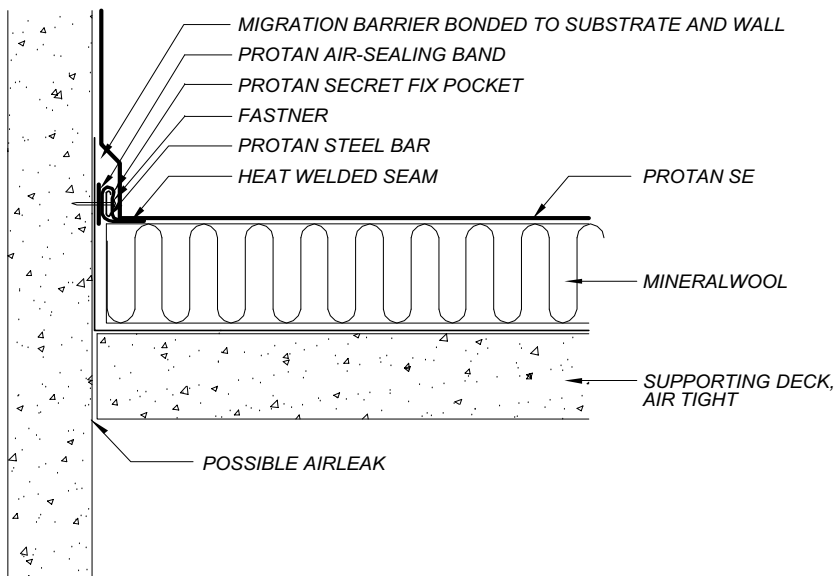
Vacuum Roofing System - general

Drawing No.: 40-55-01
Version No.: 01-2004
Not to scale



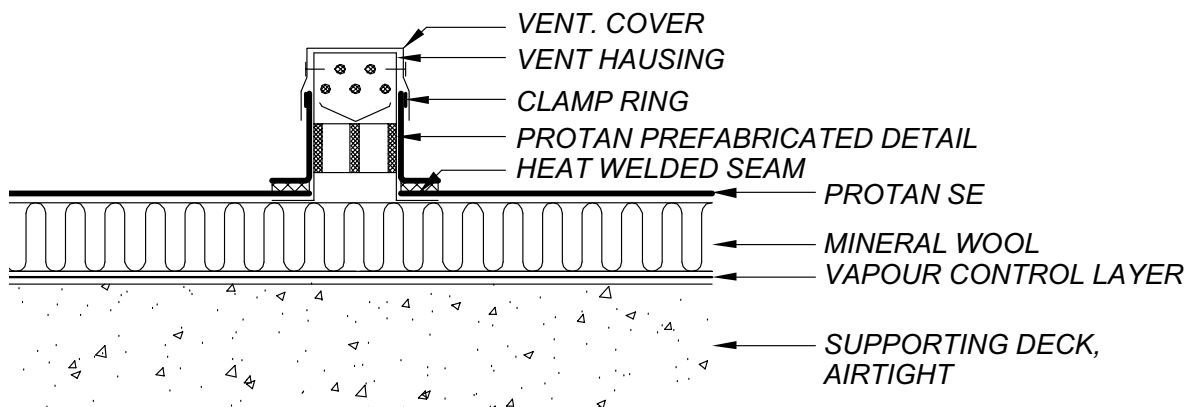
Vacuum Roofing System – parapet detail

Drawing No.: 40-55-02
Version No.: 01-2004
Not to scale



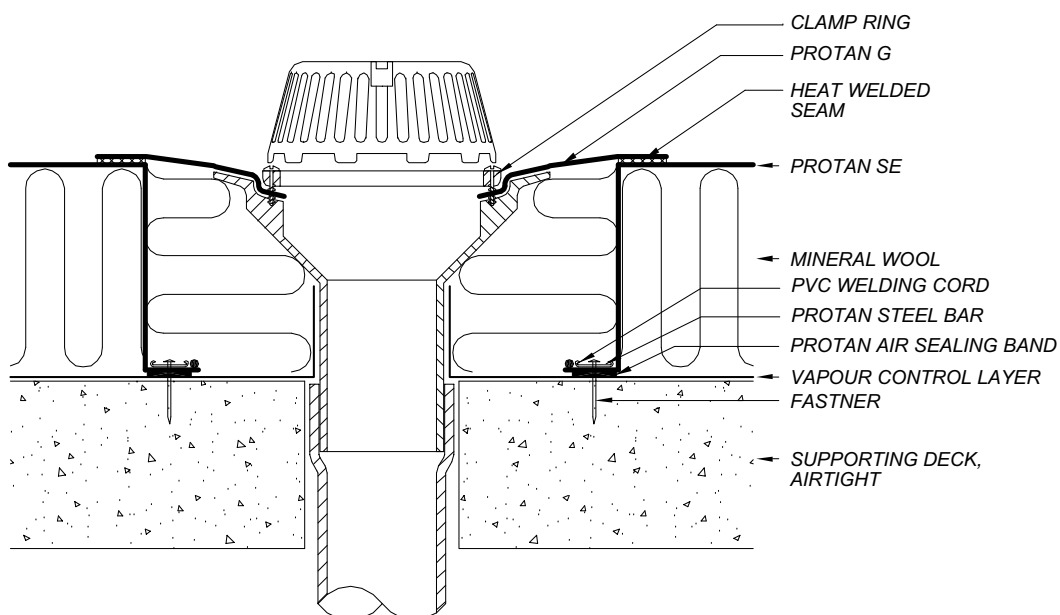
Vacuum Roofing System – vacuum vent detail

Drawing No.: 40-55-03
 Version No.: 01-2004
 Not to scale



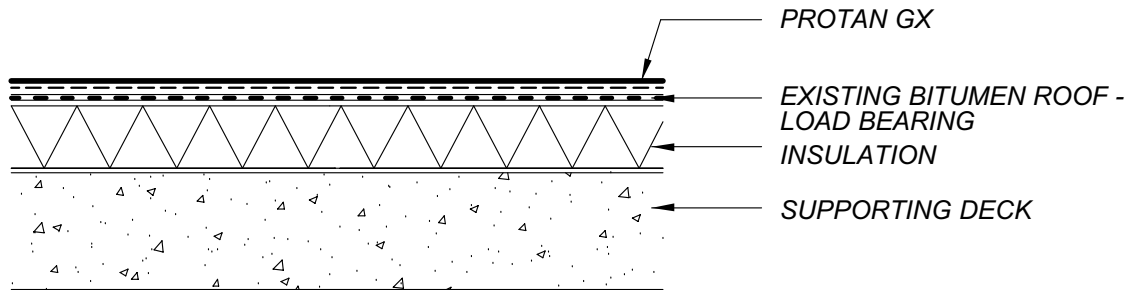
Vacuum Roofing System – outlet detail

Drawing No.: 40-55-04
 Version No.: 01-2004
 Not to scale



Adhered Roofing System - general

Drawing No.: 40-60-01
Version No.: 01-2004
Not to scale



Other technical drawings

Protan Protected Membrane Roof



Protan Roof Renovation



Protan Terraces and Balconies



Protan Exposed Membrane Roof

Protan Technical Drawings



Protan AS
P. O. Box 420 Brakerøya - N-3002 Drammen - Norway
Telephone +47 32 22 16 00 - Fax +47 32 22 17 00
www.protan.com