

# Planbussen 2024

Rural planning, design and development in practice

# Planbussen 2024

Rural planning, design and development in practice

A part of the collaboration courses

AAR4721 Architecture and the city – project course

AAR4725 Architecture and the city – knowledge course

# Planbussen is

A hands–on course and approach to practical rural planning and development, at the intersection between planning, architecture and ‘stedsutvikling’ (place development). The course deals with contemporary questions and challenges in different sized towns, and works directly and in close collaboration with selected municipalities, based on their unique situation, possibilities and opportunities. Through intensive field-work, and an active involvement of the local communities, we create projects that aims to merge the physical and the social development of ‘place’.

# Planbussen does

- Area planning and strategies
- Connectivity and connections
- Architecture and interventions
- Nature and landscape
- Place and space development
- User involvement and participation
- Critical sustainability assessment
- And more...

# Planbussen, why?

- 912 out of 1057 Norwegian settlements have less than 5000 inhabitants
- 1 out of 2 municipalities are in need of more planning competence
- Smaller towns and settlements lack clear planning and development strategies, compared to the cities
- Cities handle possibilities  
Towns must create them

# Studio Planbussen 2024

- AAR4721 Architecture and the city – project course (15sp)
- AAR4725 Architecture and the city – knowledge course (7.5sp)
- Open for approx. 8-16 students\*
- Runs from February to June 2024
- 2 projects, 2 sites, 2 municipalities
- Design projects will be done in groups of 2-4 students
- Knowledge course as a collective or joint assignment
- Studio in Trondheim,  
possibly funded excursion and workshop abroad
- Supervisors are Prof.dr. Markus Schwai and Phd.cand. Erik Hofsbro
- See [www.planbussen.no](http://www.planbussen.no) for more information and previous works

*\*Planbussen requires a high level of critical thinking and independent work*



FILLAN



VERDAL



TRONDHEIM





Participation and field work - Kjerknesvågen (2022)

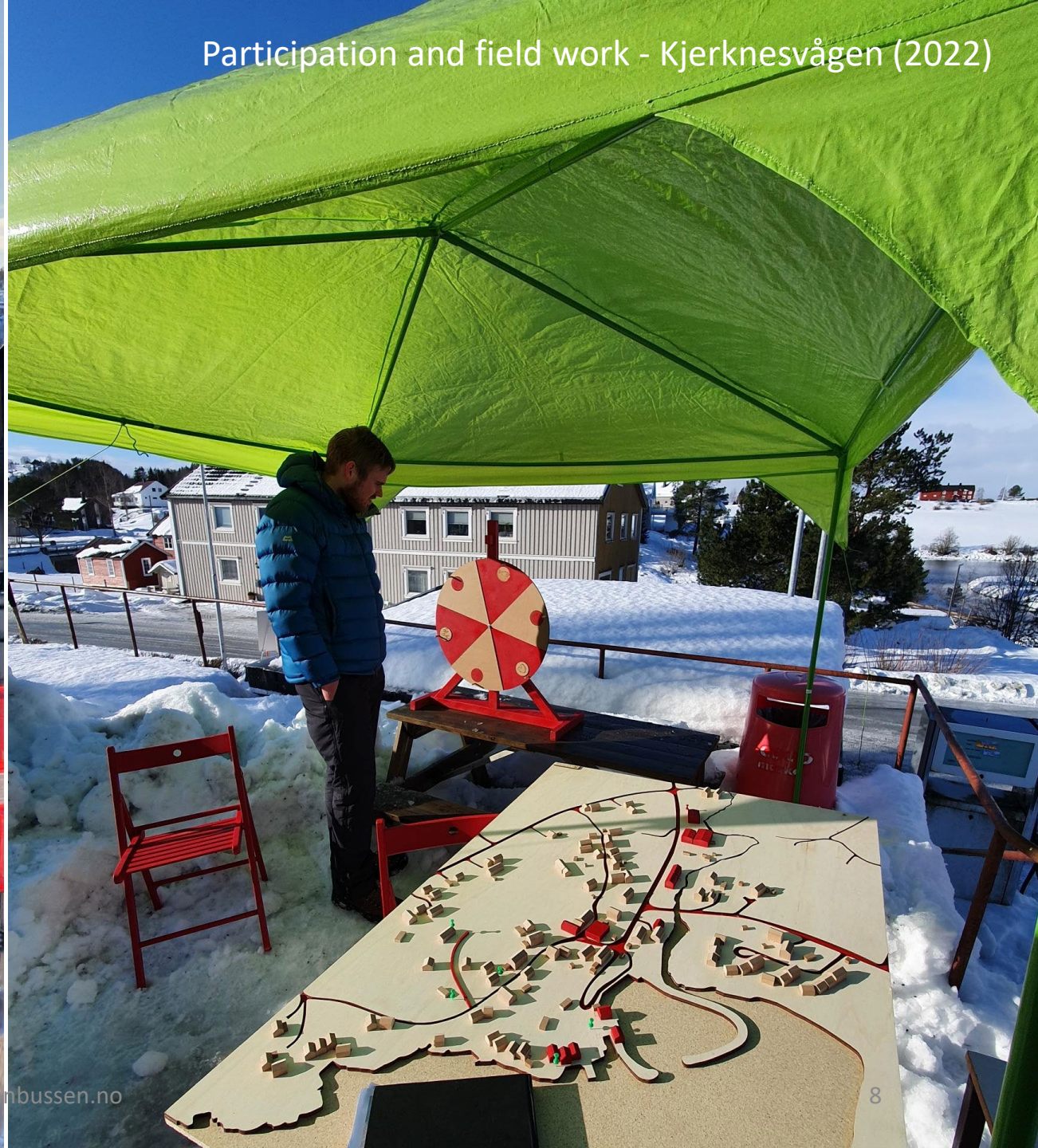




Illustration example - Vågå (2006)



WEEK	TOPIC	CONTENT
6	START	Introduction and first assignments
7	FIELDWORK	Short fieldwork (#1)(1-3 days)
8	INTERMESSO	Project development (#1) and preparation for next field work (#2)
9	FIELDWORK	Long fieldwork with project development and presentation (#2)
10	WORK	Daytrip presentation (#1) and project development (#2)
11	WORK	Work Work...
12	WORK	Possible pin-up or review
13	EASTER	Holiday
14	WORK	Possible pin-up or review
15	WORK	Work...
16	WORK	...
17	WORK	Possible pin-up or review
18	ABROAD	Excursion and workshop abroad
19	WORK	...
20	WORK	...
21	HAND-IN	Final design project delivery
22	CRITICS	Design critics
23	PRESENTATION	Project presentations at the municipalities and theory work
24	HAND-IN	Theory work delivery
25	STOP	END OF SEMESTER





Prof.dr.

Markus Schwai

[markus.schwai@ntnu.no](mailto:markus.schwai@ntnu.no)



Phd.cand.

Erik Frydenlund Hofsbro

[erik.f.hofsbro@ntnu.no](mailto:erik.f.hofsbro@ntnu.no)

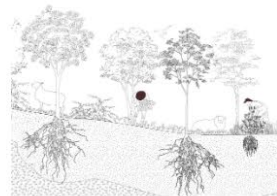
# PROSJEKTER

2023



*Valorizing the heritage*

Dovre (Dovre)



*Agroforestry Vineyards*

Dovre (Dovre)



*Connections*

Dovre (Dovre)



*Cultural Hotspot*

Dovre (Dovre)



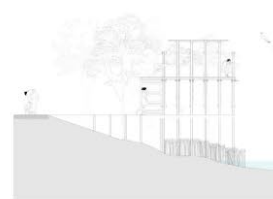
*Activating Bismo*

Bismo (Skjåk)



*Refueling*

Bismo (Skjåk)



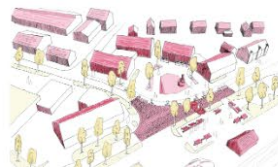
*Reconnecting*

Bismo (Skjåk)



*Renew*

Bismo (Skjåk)



**THEORY BOOK**  
**2023**



[www.planbussen.no](http://www.planbussen.no)

